



Building name

PGM HOTEL RESORT OKINAWA

Location

Okinawa Prefecture

Completion

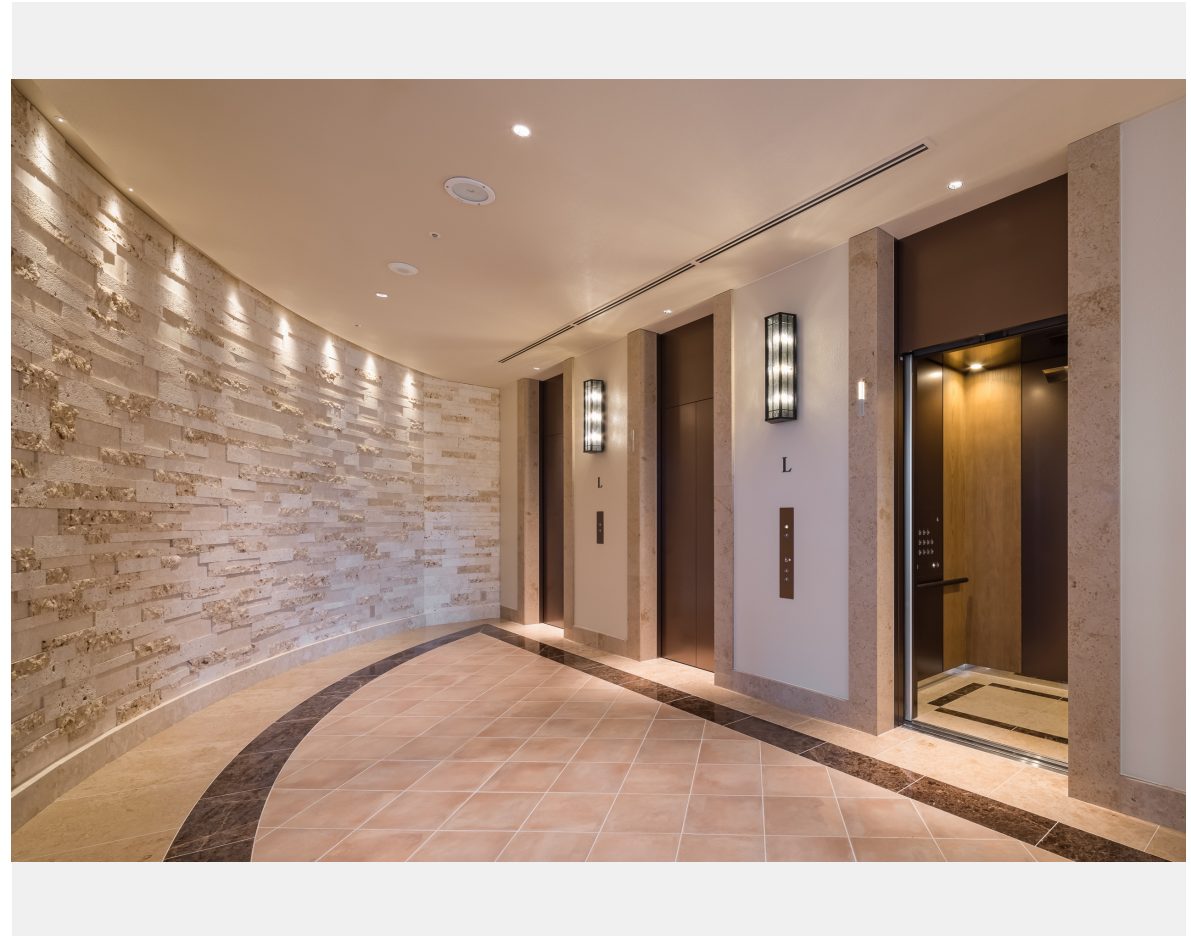
2026

Total units

Elevator 11

“PGM Hotel Resort Okinawa” is a luxury golf resort designed to bring guests the fullest enjoyment of their stay, situated in a spacious location overlooking the East China Sea. It features a wide range of facilities, including five restaurants and three bars, as well as a luxury spa, sauna, fitness center, garden pool, and indoor pool, etc. Additionally, the adjacent “PGM Golf Resort Okinawa” is a championship course beloved by many golfers, featuring enhanced strategic design supervised by professional golfer Isao Aoki.

Fujitec has installed eleven (11) elevators here. Inside the elevator cars, a combination of bronze-colored stainless steel and natural non-combustible wood panels creates a high-quality, warm atmosphere. The floors feature substantial granite. The handrails are made of “bridle leather,” a high-grade leather known for its durability and the fact that its character deepens with use, achieving an aesthetic and comfort befitting the resort’s luxurious space.



Owner	Pacific Golf Management K.K.
Architect	Kokken Co., Ltd.
Contractor	Kokuba-Gumi Co., Ltd.



Building name

PGM HOTEL RESORT OKINAWA

Location

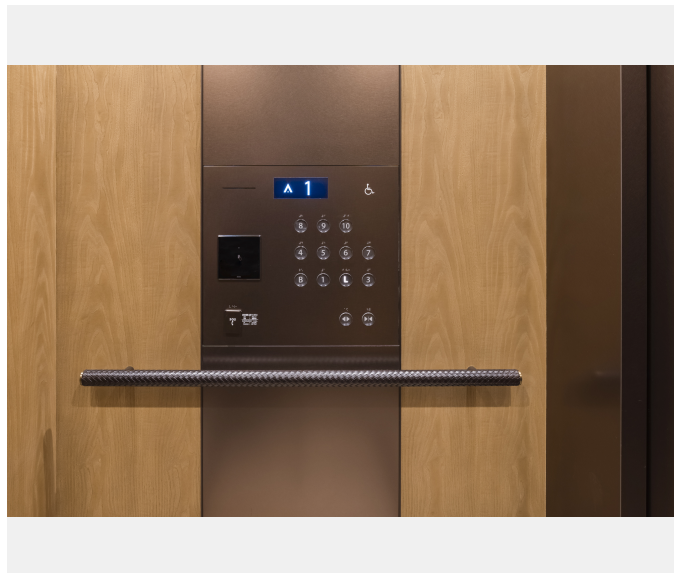
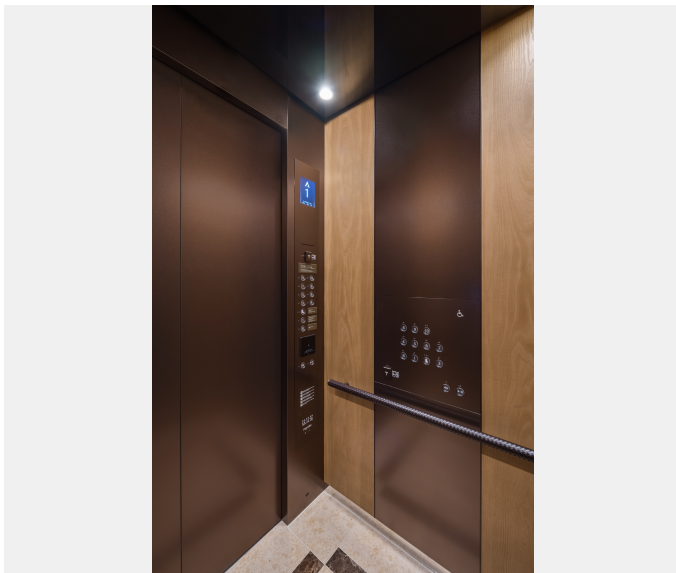
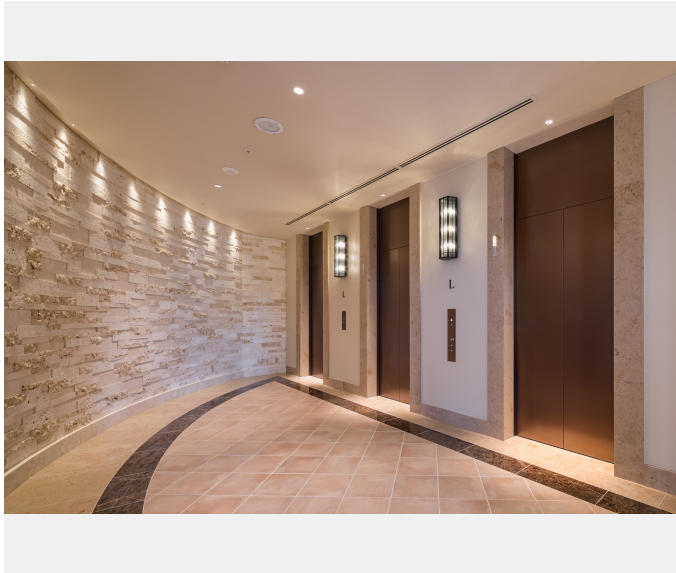
Okinawa Prefecture

Completion

2026

Total units

Elevator 11





Building name	Location	Completion	Total units
PGM HOTEL RESORT OKINAWA	Okinawa Prefecture	2026	Elevator 11

Specifications  
Elevator

Model	Use	Capacity (kg)	Capacity (person)	Speed (m/min)	Stop number of floors (floor)	unit
Order XIOR	Service	1150	17	105		1
XIOR	Passenger	900	13	120		3
XIOR	Passenger	900	13	105		2
XIOR	Passenger	750	11	105		3
XIOR	Passenger	600	09	105		1
XIOR	Passenger	600	09	60		1