



Building name

JW Marriott Hotel Tokyo

Location

Takanawa, Tokyo

Completion

2025

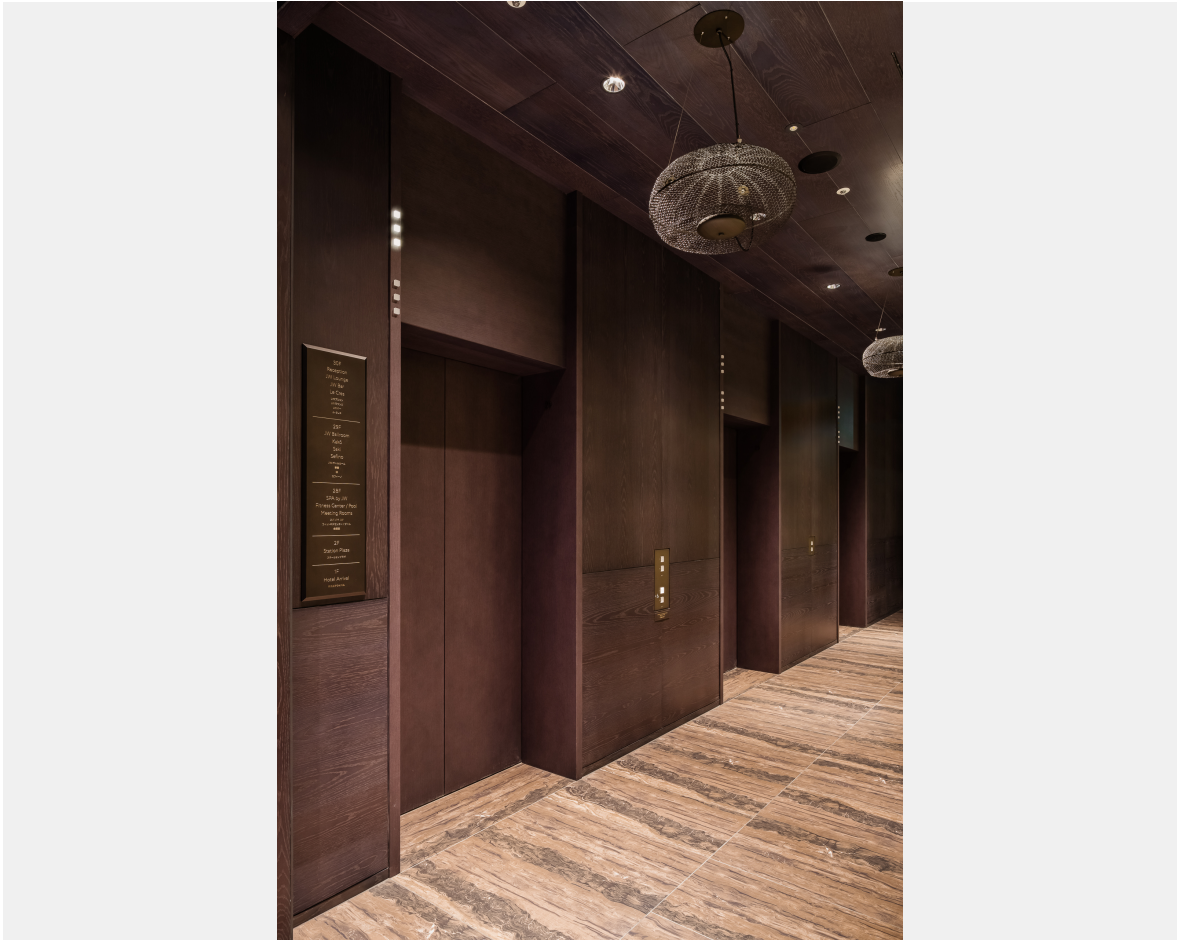
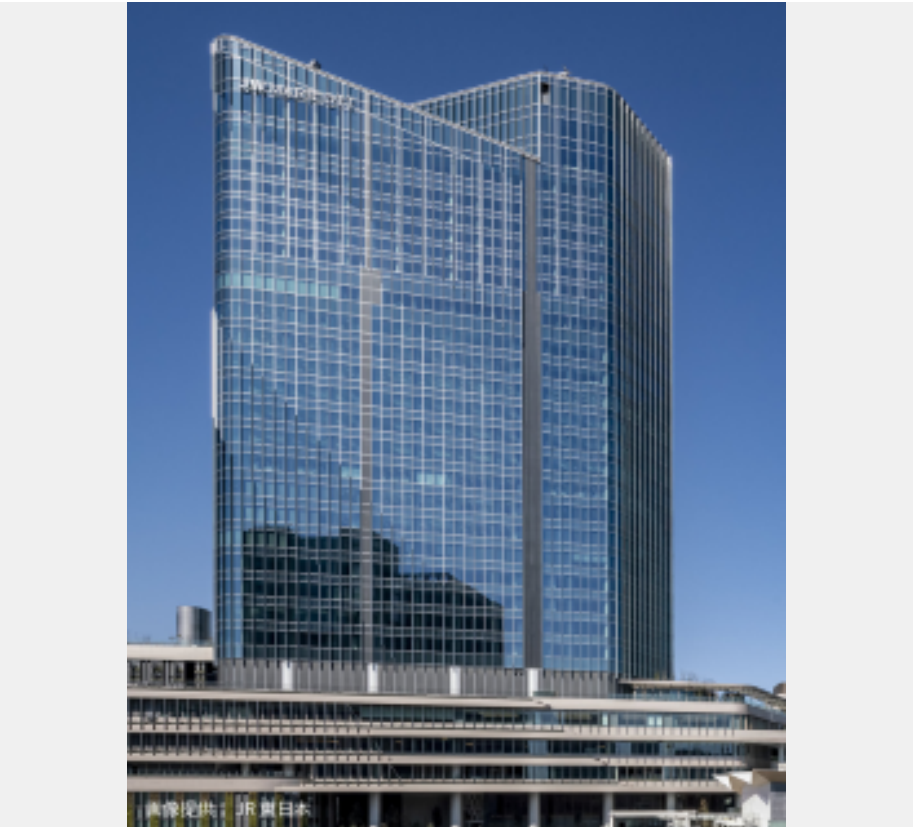
Total units

Elevator 6
Escalator 2

JW Marriott Hotel Tokyo is the Marriott Group's premier luxury hotel, offering an immersive mindfulness experience inspired by the spirit of Zen and natural beauty. Nestled in Takanawa Gateway City, it features sophisticated guest rooms, six restaurants and bars where guests can experience the changing seasons, a 25-meter indoor pool, a fitness gym, a spa, and a variety of other facilities.

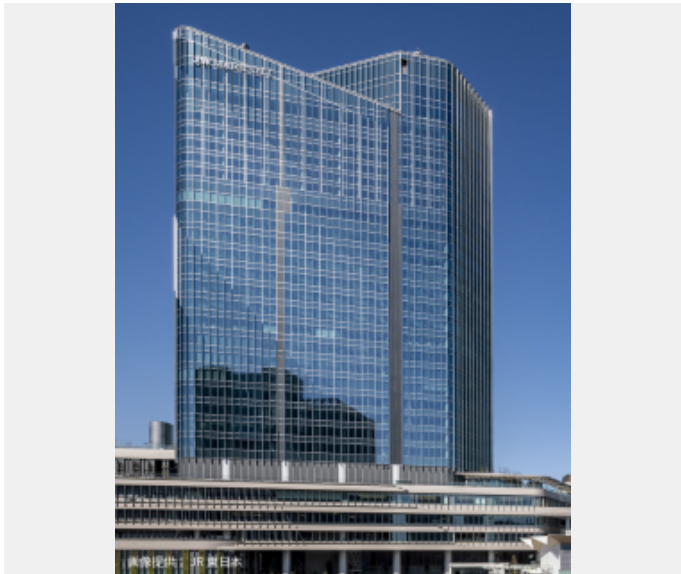
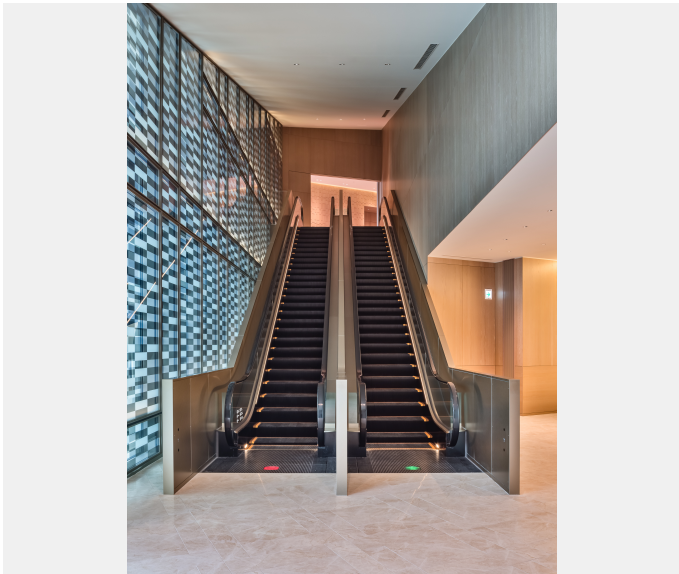
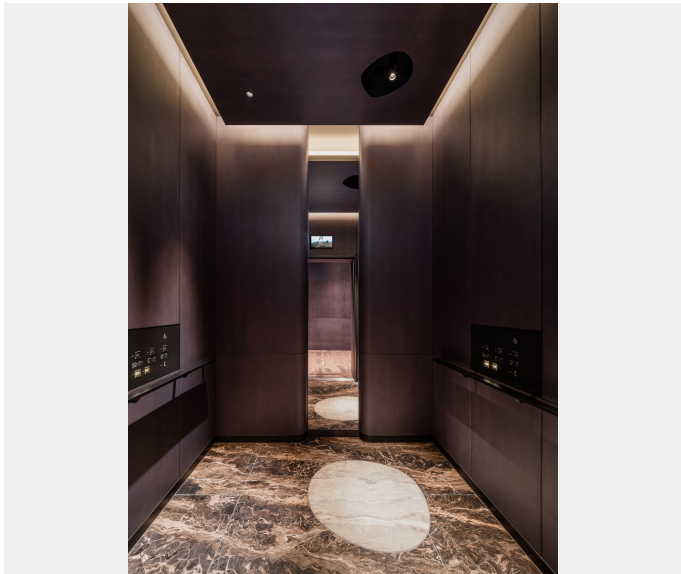
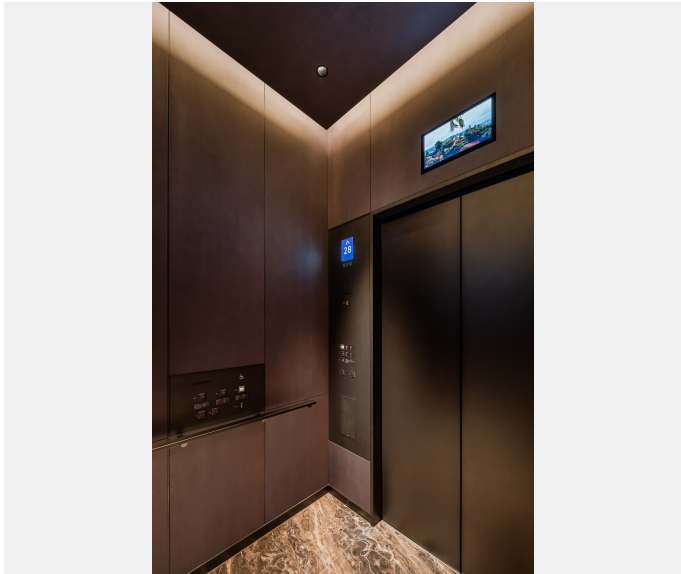
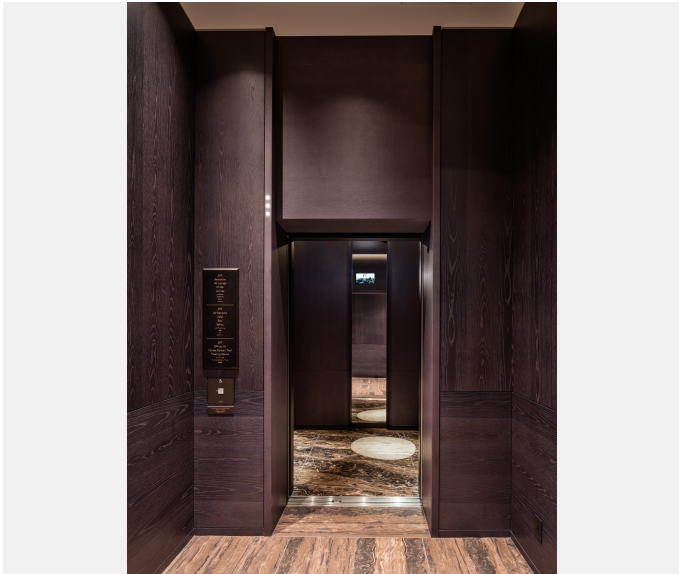
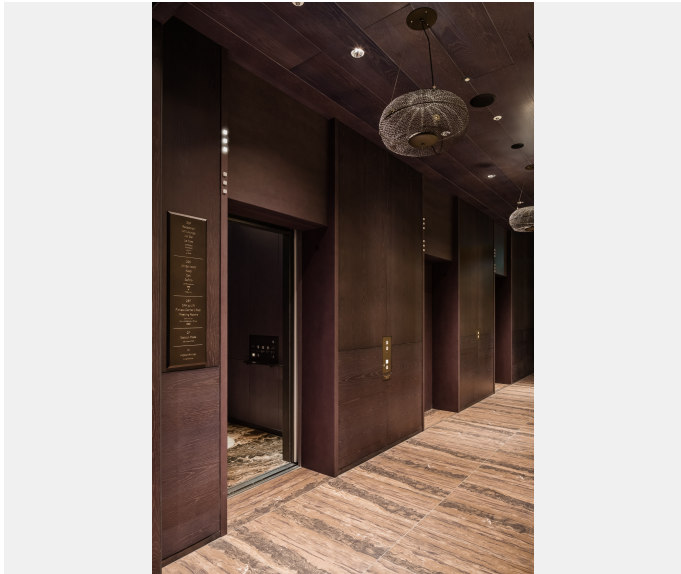
Fujitec supplied six (6) elevators and two (2) escalators for this property.

The elevators pursue a premium ride quality and design befitting a luxury hotel. The floor design features a motif of the moon over Gotenyama (historically famous for the Shogun villa and Japanese garden), reflecting Takanawa's long-cherished reputation since the Edo period as a famous spot for cherry blossom viewing and moon appreciation. The position of the escalators allows natural light to enter, while skirt-guard LED lighting softly illuminates the foot area, enhancing the elegant space.



| | |
|------------|--|
| Owner | East Japan Railway Company |
| Architect | Shinagawa Development Project (Phase I) Design Joint Venture |
| Contractor | Obayashi Corporation |

| Building name | Location | Completion | Total units | |
|-------------------------|-----------------|------------|-------------|---|
| JW Marriott Hotel Tokyo | Takanawa, Tokyo | 2025 | Elevator | 6 |
| | | | Escalator | 2 |





| | | | | |
|-------------------------|-----------------|------------|-------------|---|
| Building name | Location | Completion | Total units | |
| JW Marriott Hotel Tokyo | Takanawa, Tokyo | 2025 | Elevator | 6 |
| | | | Escalator | 2 |

Specifications
Elevator

| Model | Use | Capacity (kg) | Capacity (person) | Speed (m/min) | Stop number of floors (floor) | unit |
|-------|-----------|------------------|----------------------|------------------|--|------|
| PM-GL | passenger | 1600 | 24 | 360 | | 3 |
| PM-GL | service | 2000 | 30 | 360 | | 3 |

Escalator

| Model | Type | Step width (mm) | Rise (mm) | Incline (degree) | unit |
|---------|------|--------------------|--------------|---------------------|------|
| Slimfit | S | 1000 | 5300 | 30 | 2 |