



Building name

TAKANAWA GATEWAY CITY

Location

Minato City, Tokyo

Completion

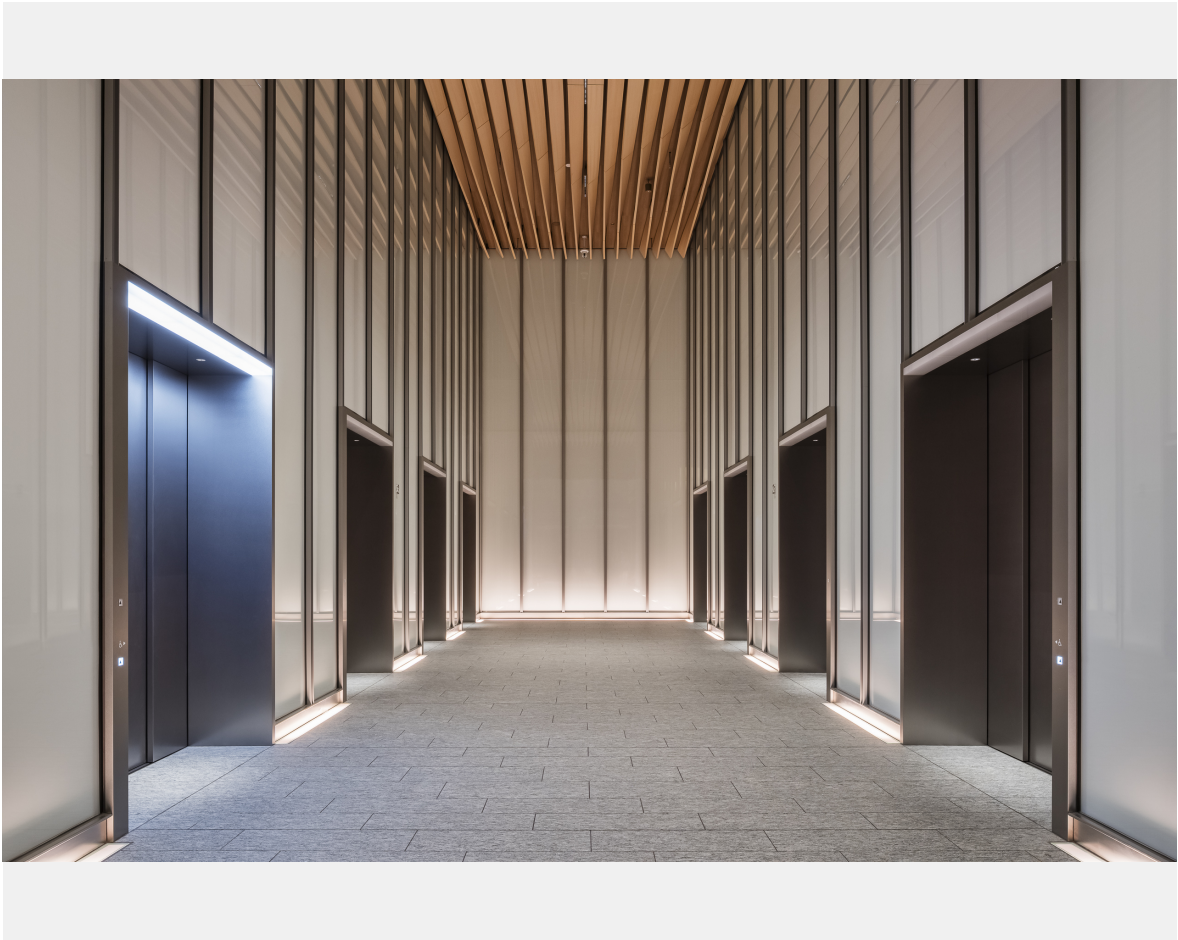
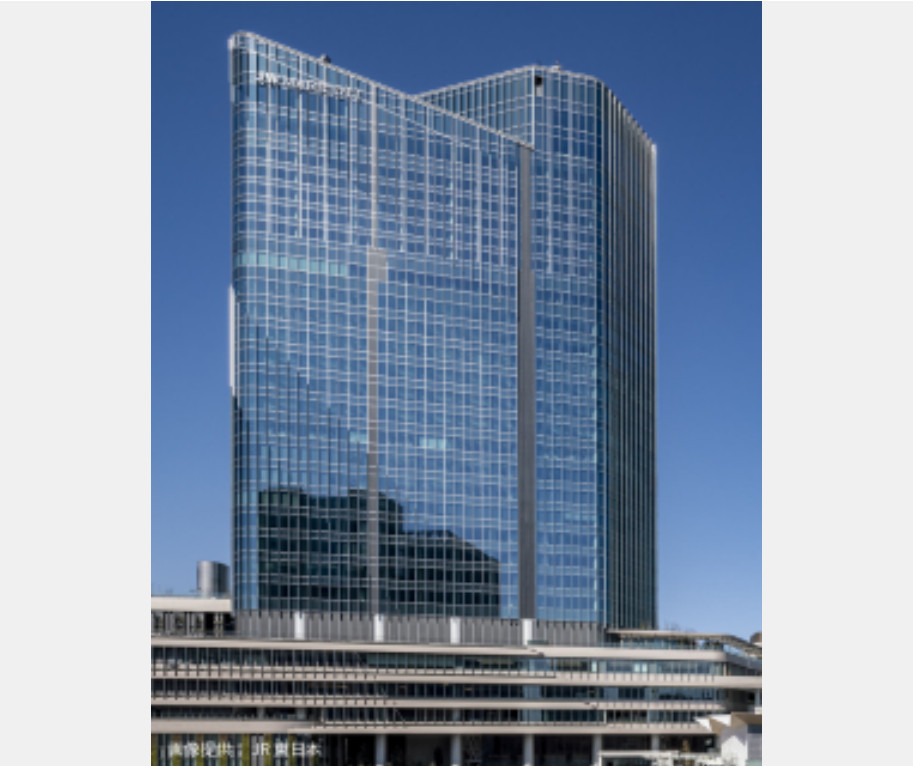
2025

Total units

Elevator 50  
Escalator 34

TAKANAWA GATEWAY CITY is a complex directly connected to Takanawa Gateway Station, built on the site of the former Shinagawa Rolling Stock Depot of JR East. Stretching approximately 1.6 kilometers north to south, it is one of the largest integrated station-city development in Tokyo. Leveraging its accessibility—just approximately 15 minutes from Haneda Airport and one stop from Shinagawa Station, a gateway to the Kansai regions—it serves as an international hub where new business and culture continuously appear.

Fujitec supplies fifty (50) elevators and thirty-four (34) escalators for this project. The elevators feature specifications enabling autonomous movement in coordination with service robots for security, cleaning, and delivery. Additionally, fifty-four (54) -person shuttle elevators effectively alleviate congestion during office rush hours. For design, wood rib panels and marble-like finishes are adopted, harmonizing with the high-quality, tranquil space design of the landing areas.



Owner	East Japan Railway Company
Architect	Shinagawa Development Project (Phase I) Design Joint Venture Group
Contractor	Obayashi Corporation

Building name

TAKANAWA GATEWAY CITY

Location

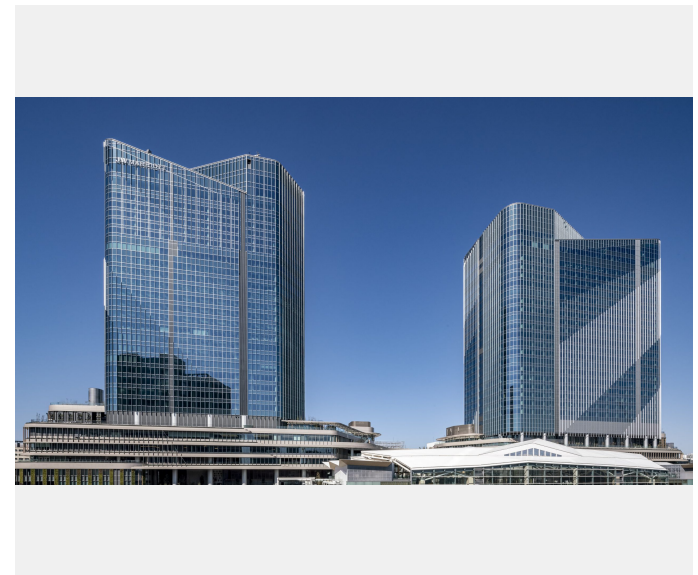
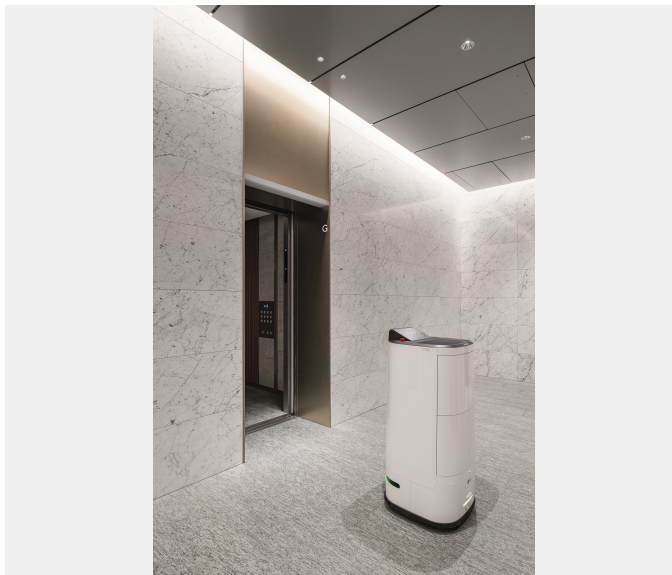
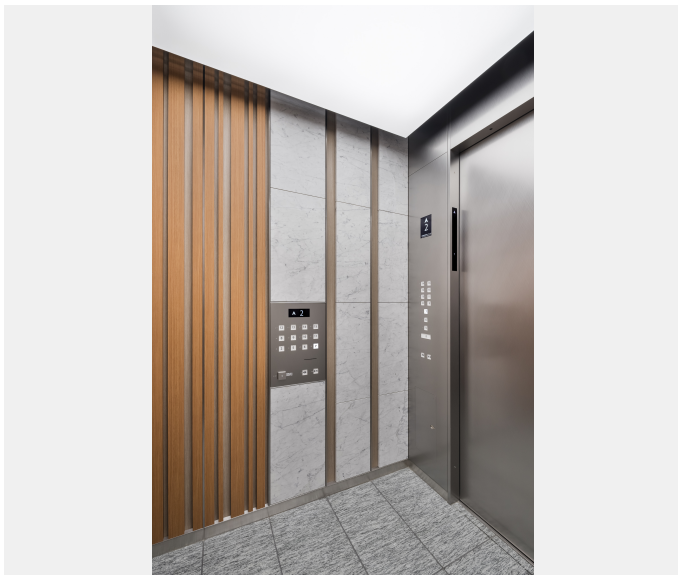
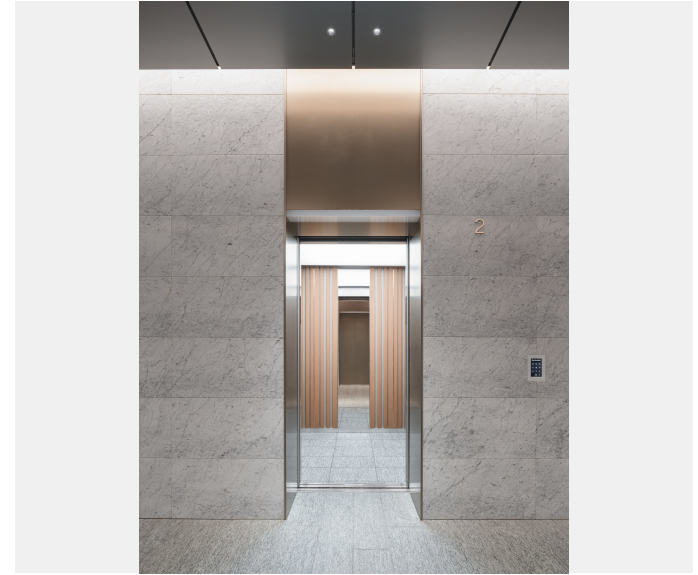
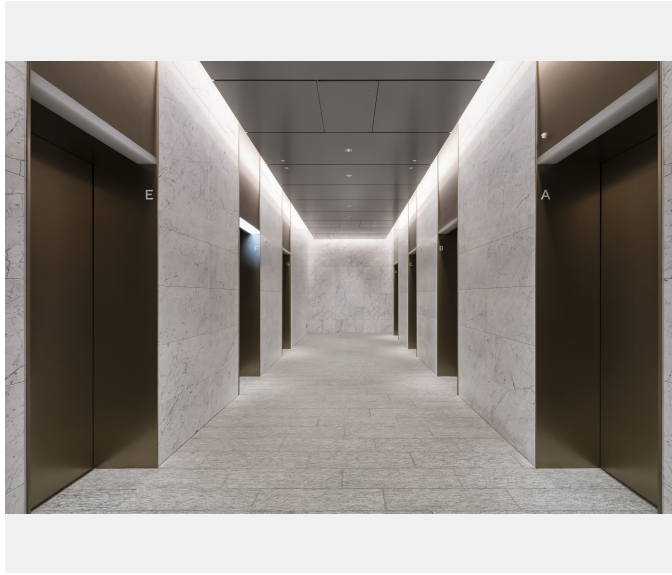
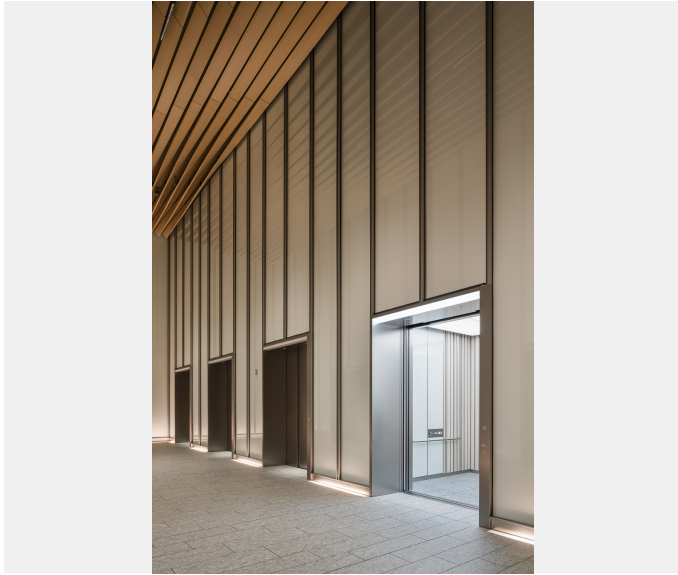
Minato City, Tokyo

Completion

2025

Total units

Elevator 50  
Escalator 34





Building name

TAKANAWA GATEWAY CITY

Location

Minato City, Tokyo

Completion

2025

Total units

Elevator 50  
Escalator 34

Specifications  
Elevator

Model	Use	Capacity (kg)	Capacity (person)	Speed (m/min)	Stop number of floors (floor)	unit
PM-GL	Passenger	1800	27	360		7
PM-GL	Passenger	3550	54	180		8
PM-GL	Passenger	1800	27	180		7
PM-GL	Service	2000	30	360		3
PM-GL	Service	1150	17	210		2
PM-GL	Service	3000	30	150		1
PM-GL	Service	1700	26	150		1
Order XIOR	Passenger	1600	24	105		4
Order XIOR	Passenger	1450	22	105		2
Order XIOR	Passenger	1350	20	105		2
Order XIOR	Passenger	1600	24	60		1
Order XIOR	Passenger	1350	20	60		1
Order XIOR	Passenger	1200	18	60		1
Order XIOR	Passenger	1150	17	60		2
Order XIOR	Service	2000	30	105		1

Model	Use	Capacity (kg)	Capacity (person)	Speed (m/min)	Stop number of floors (floor)	unit
Order XIOR	Service	2000	24	105		1
Order XIOR	Service	1350	20	105		4
Order XIOR	Service	1750	26	60		1
XIOR	Passenger	750	11	60		1



Building name

TAKANAWA GATEWAY CITY

Location

Minato City, Tokyo

Completion

2025

Total units

Elevator 50  
Escalator 34

Escalator

Model	Type	Step width (mm)	Rise (mm)	Incline (degree)	unit
GS-NX	S	600	7800	30	2
Slimfit	S	1000	6800	30	2
Slimfit	S	600	6800	30	1
Slimfit	S	1000	5600	30	10
Slimfit	S	1000	5600	35	2
Slimfit	S	600	5600	30	1
Slimfit	S	1000	5100	35	6
Slimfit	S	1000	5100	30	10