



Building name

LILAC SQUARE

Location

Hokkaido Prefecture

Completion

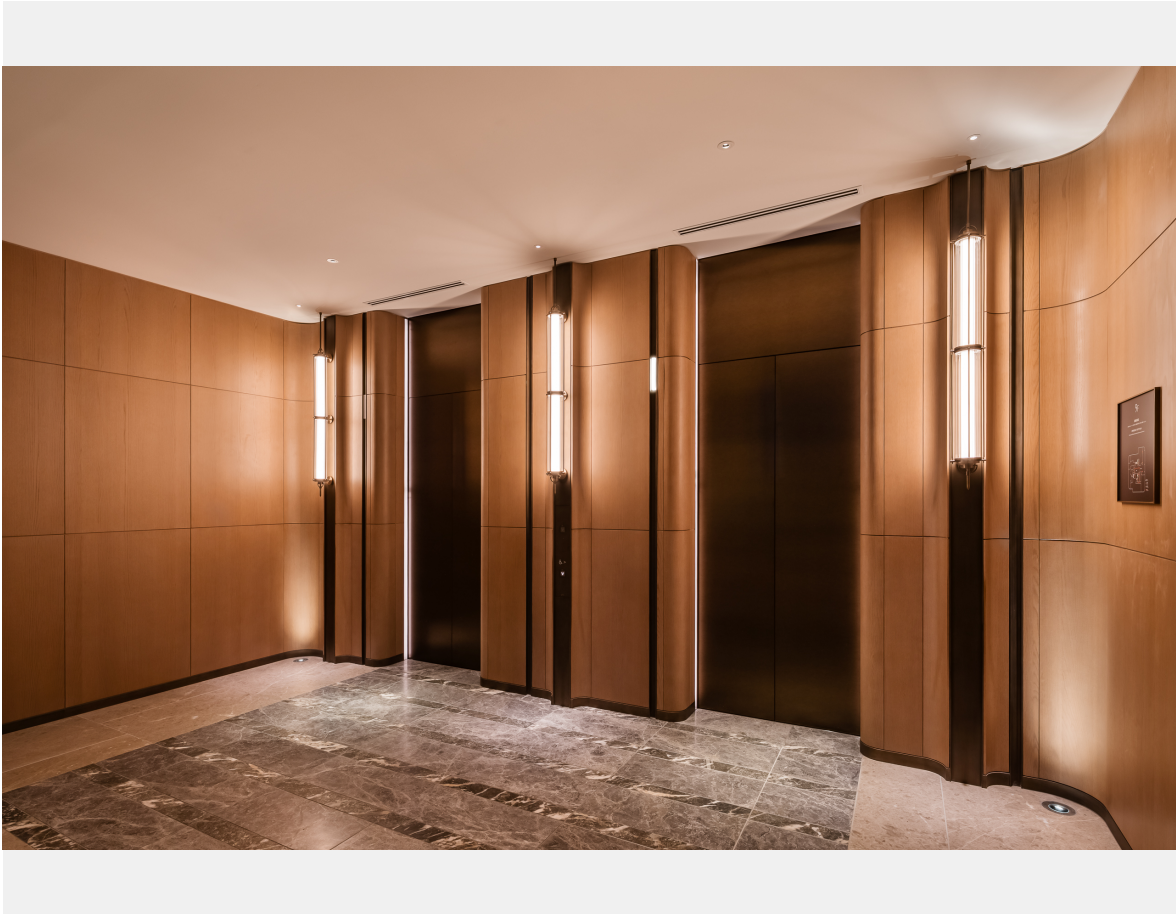
2025

Total units

Elevator 19  
Escalator 2



Lilac Square is in the Nakajima Park area at the edge of the southern part of Sapporo City. This fourteen (14) - story complex building has a commercial facility on the first three floors, an office area on the fourth to eighth floors, and the luxury Intercontinental Sapporo Hotel on the ninth floor and above. It is the first foreign-capitalized international hotel in Hokkaido. The office floors have a business lounge and an outdoor terrace with a view of the Toyohira River. These floors offer a newly valuable idea: a "Wellness Office" that focuses on the well-being of working people. Fujitec installed nineteen (19) elevators and two (2) escalators. The elevators at the Intercontinental Sapporo Hotel have indirect lighting and a rib panel on one side. The bracket lights used for the indirect lighting give off a soft glow. This, combined with the flagstone floor, provides users with an extremely comfortable space to move vertically. The elevators for the office area have a stainless-steel finish, which makes them look sophisticated. The escalators that lead to the elevator hall have LED skirt guards that light up the feet of passengers evenly with a soft, natural light. These escalators create a stylish and comfortable space.



Basic Design	Kume Sekkei Co., Ltd.
Detailed Design & Construction Supervision	Takenaka Corporation
Contractor	Takenaka Corporation



Building name

LILAC SQUARE

Location

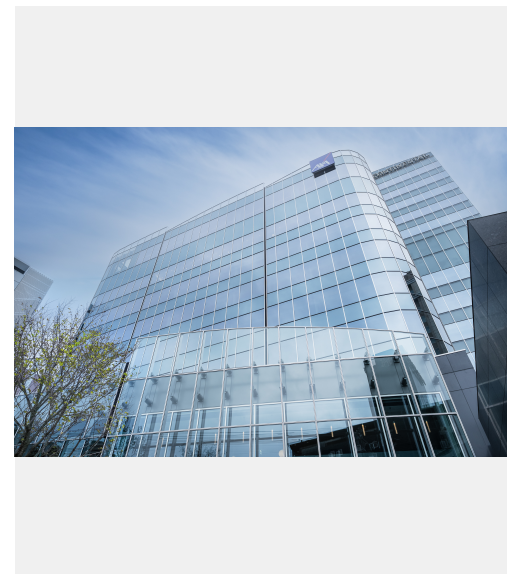
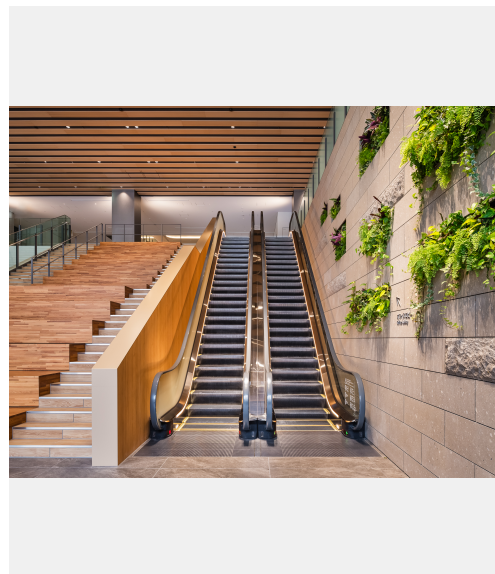
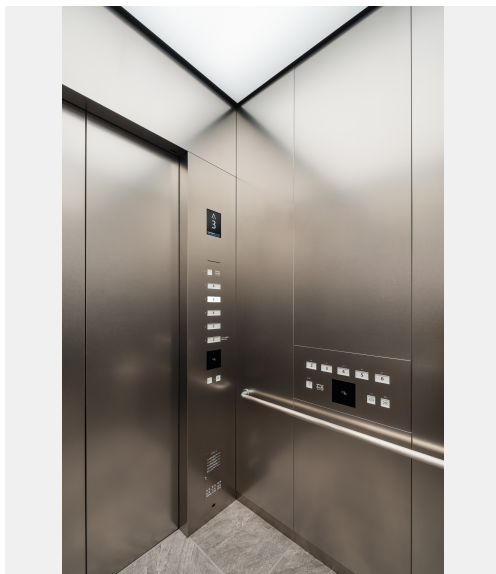
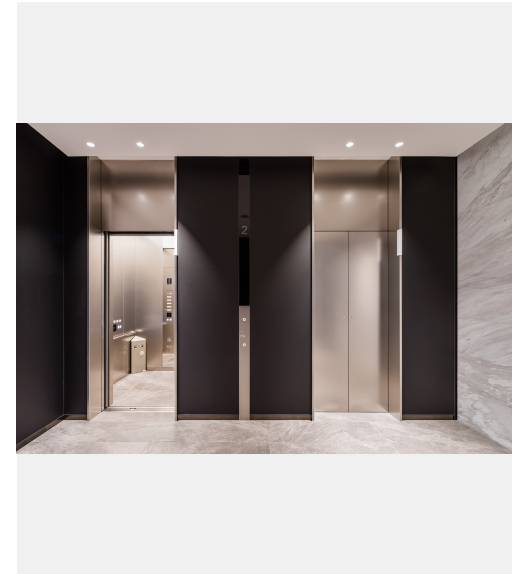
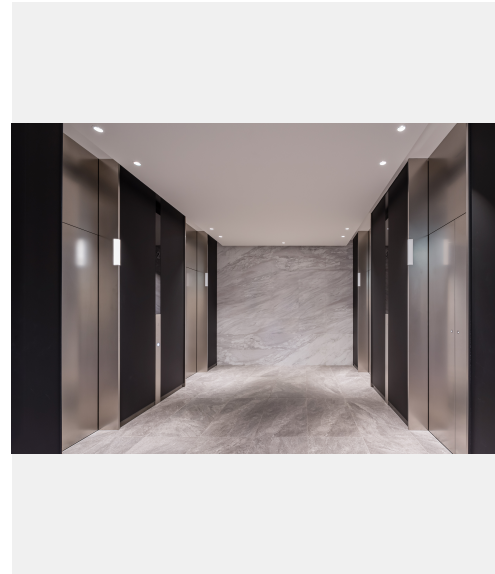
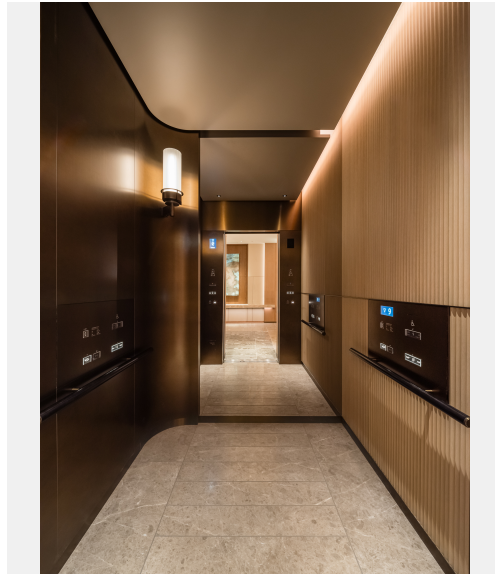
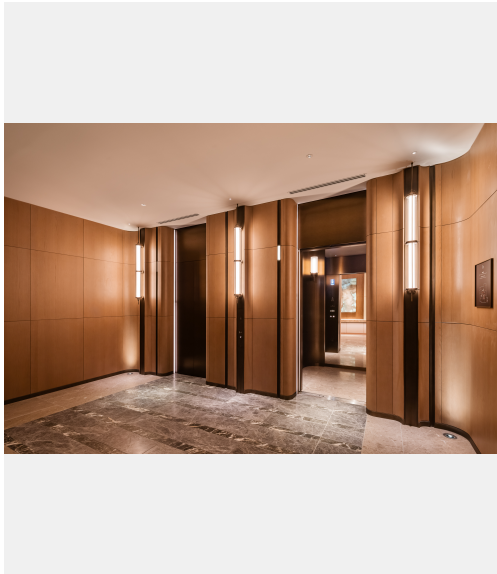
Hokkaido Prefecture

Completion

2025

Total units

Elevator 19  
Escalator 2





Building name

LILAC SQUARE

Location

Hokkaido Prefecture

Completion

2025

Total units

Elevator 19  
Escalator 2



Specifications  
Elevator

Model	Use	Capacity (kg)	Capacity (person)	Speed (m/min)	Stop number of floors (floor)	unit
Order XIOR	Passenger	1350	20	105		5
Order XIOR	Passenger	1200	18	105		7
Order XIOR	Passenger	1350	20	60		1
Order XIOR	Service	1150	17	105		4
Order XIOR	Service	1150	17	60		1
XIOR	Passenger	1000	15	60		1

Escalator

Model	Type	Step width (mm)	Rise (mm)	Incline (degree)	unit
GS-NX	S	1000	5350	35	2