



Building name

TODA BUILDING

Location

Kyobashi, Tokyo

Completion

2024

Total units

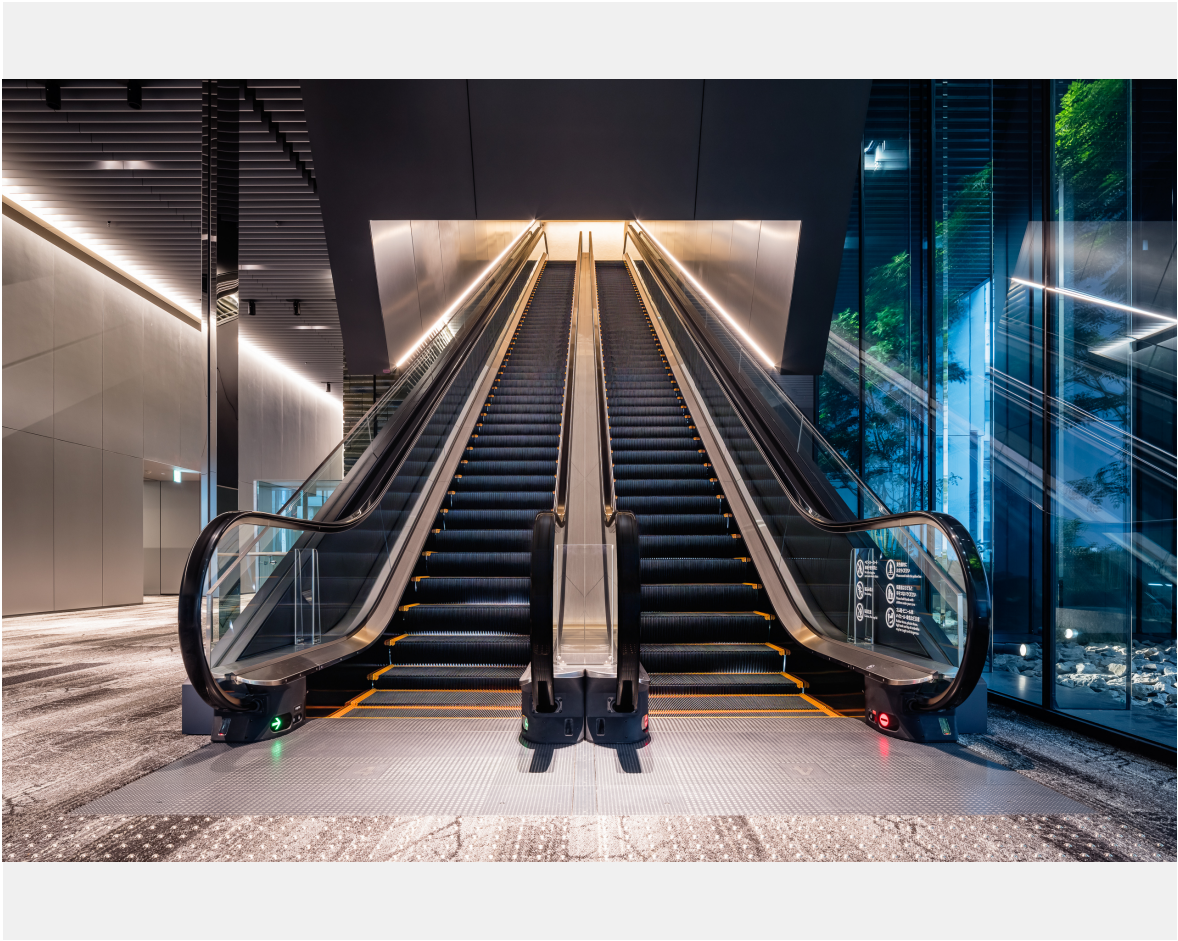
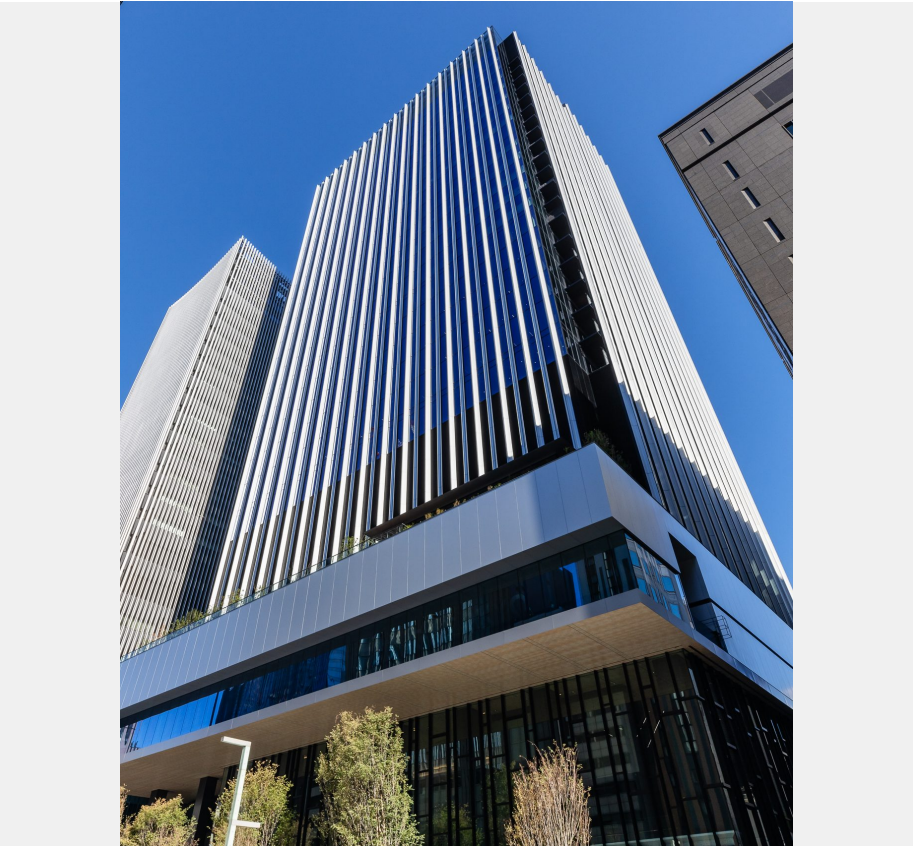
Elevator 3
Escalator 13



Toda Building is a twenty-eight (28)-story office building with three (3) basement levels, located in Kyobashi, Tokyo. Designed under the concept of integrating art with business, the building features art- and culture-focused floors in the low zone and office spaces in the high zone. The building invites not only office workers but also passersby to experience its unique public art displays. At the entrance, visitors can admire various artworks, while the museum section showcases modern art and pop culture exhibitions, creating an engaging cultural hub.

In this fascinating building, Fujitec installed a total of 16 units: three (3) elevators and thirteen (13) escalators. The elevators, inspired by the design of spaceships, feature an interior in a unified shining white. Their corners with the curved recesses offer an attractive and innovative design.

The two (2) escalators leading to the museum have an illumination design with the theme of the streaming of sunbeams through the leaves of trees. The interior of the escalators is provided with LED lights which illuminate the steps from the escalator's inner sides. The light beams leaked from the clearance between the respective steps bring the users the expectation that they are approaching the upper floors.



Owner	Toda Corporation
Architect	Toda Corporation
Contractor	Toda Corporation



Building name

TODA BUILDING

Location

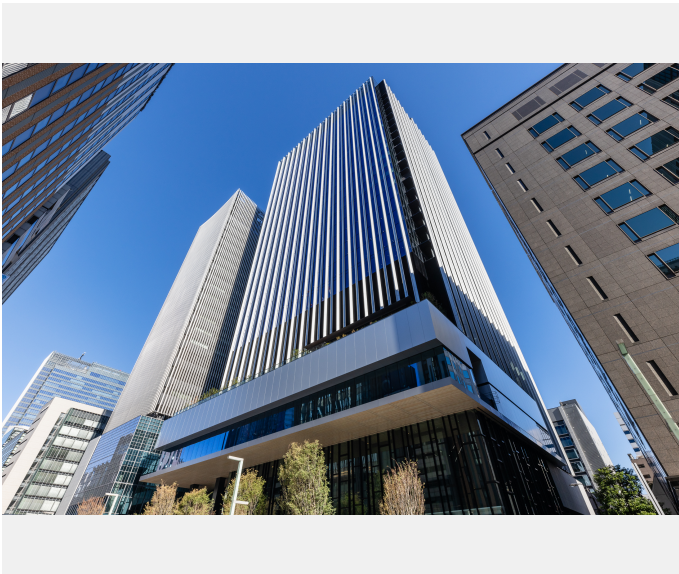
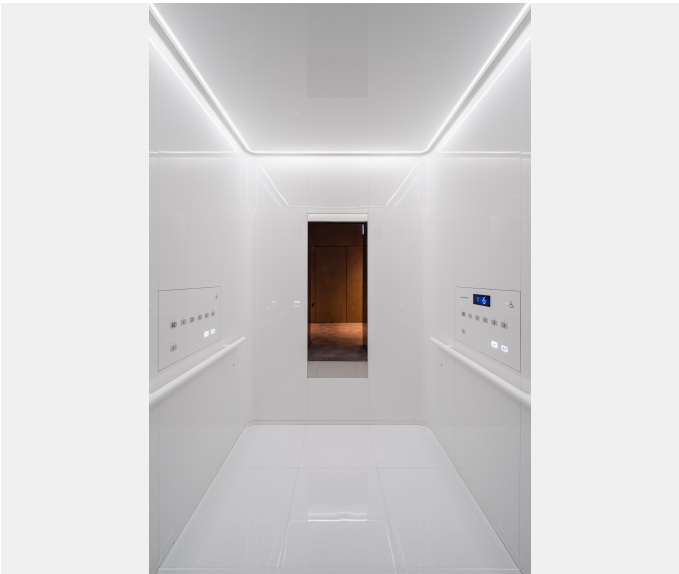
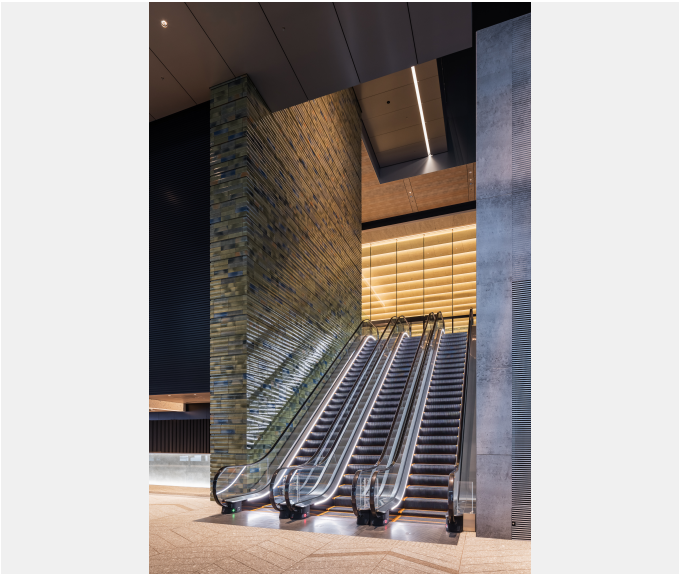
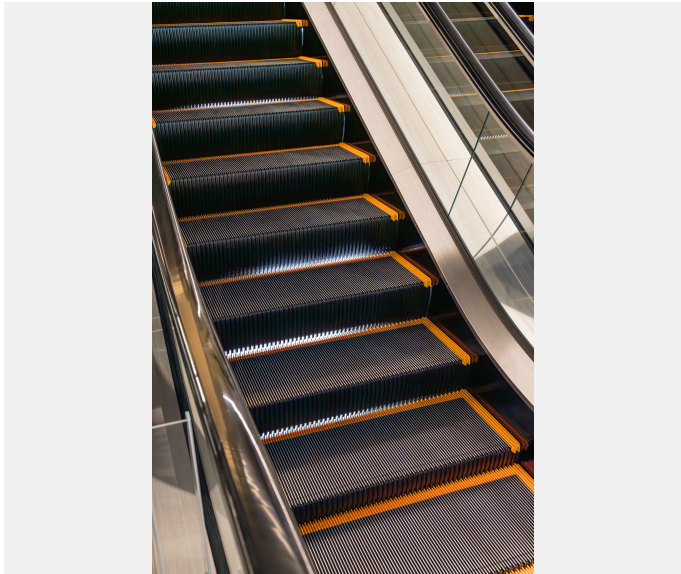
Kyobashi, Tokyo

Completion

2024

Total units

Elevator 3
Escalator 13





Building name

TODA BUILDING

Location

Kyobashi, Tokyo

Completion

2024

Total units

Elevator 3
Escalator 13



Specifications
Elevator

Model	Use	Capacity (kg)	Capacity (person)	Speed (m/min)	Stop number of floors (floor)	unit
XIOR	Passenger	950	14	105	6	2
XIOR	Passenger	950	14	60	3	1

Escalator

Model	Type	Step width (mm)	Rise (mm)	Incline (degree)	unit
GS-NX	S	1000	11000	30	2
GS-NX	S	1000	6000	35	9
Slimfit	S	600	6000	30	2