



Building name

TAISEI SQUARE HANOI

Location

Hanoi, Vietnam

Completion

2024

Total units

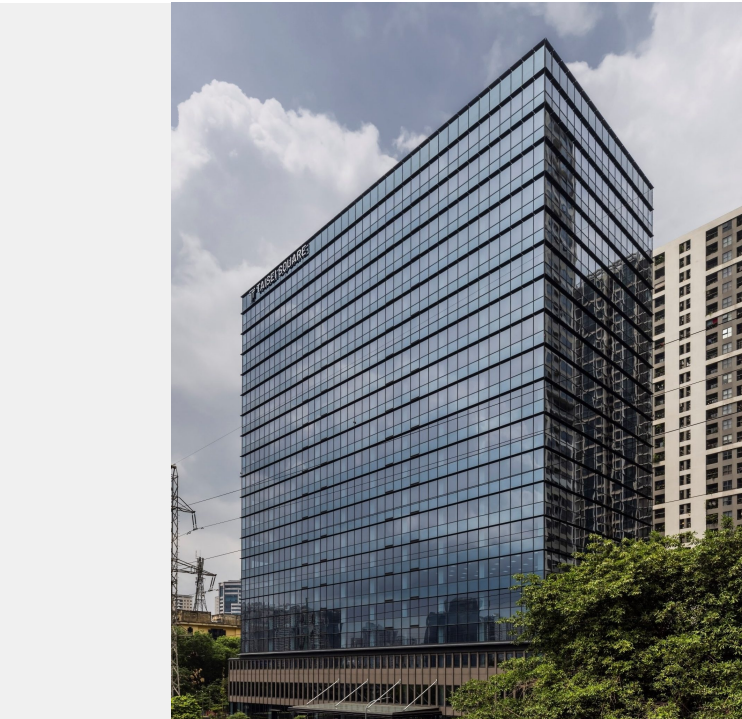
Elevator 10

Taisei Square Hanoi is a modern 20-story office building with four basement levels. This state-of-the-art facility embodies Japanese quality and commitment to environmental sustainability, as demonstrated by its LEED (Leadership in Energy and Environment Design) certification.

Taisei Square Hanoi has significantly improved the office environment by equipping the premises with clean sanitary facilities for toilets, the latest air conditioners for the public and office areas, and advanced elevators, while sanitary and air conditioning facilities and transportation products in other office buildings in Hanoi City often do not meet the demands of the public.

In this sophisticated office building, Fujitec installed a total of ten (10) elevators. Among them, four elevators have the speed of 240 mpm, of which the provision is the first time ever for Fujitec Vietnam. Reflecting the building's concept that the Japanese high-quality workplace will be firmly established in Hanoi City, Fujitec elevators with Japan-originated equipment such as touchless registration buttons, Plasmacluster Ion Generating Device, IONFUL, etc. have been installed and provided a very comfortable movement to people in the building.

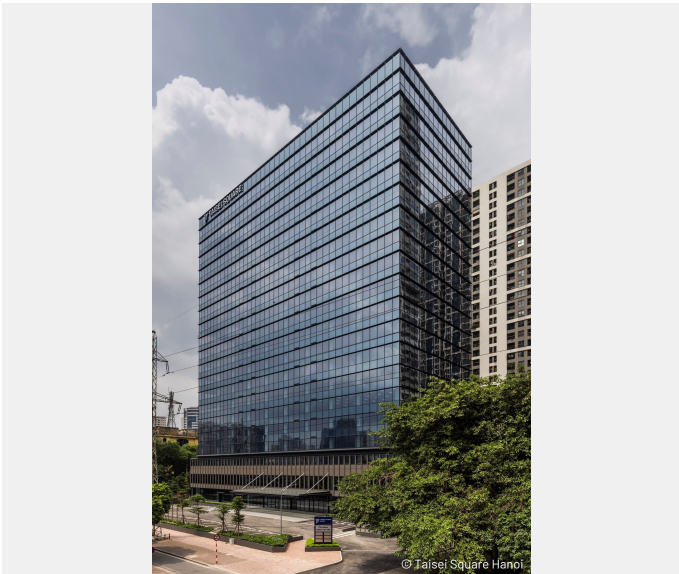
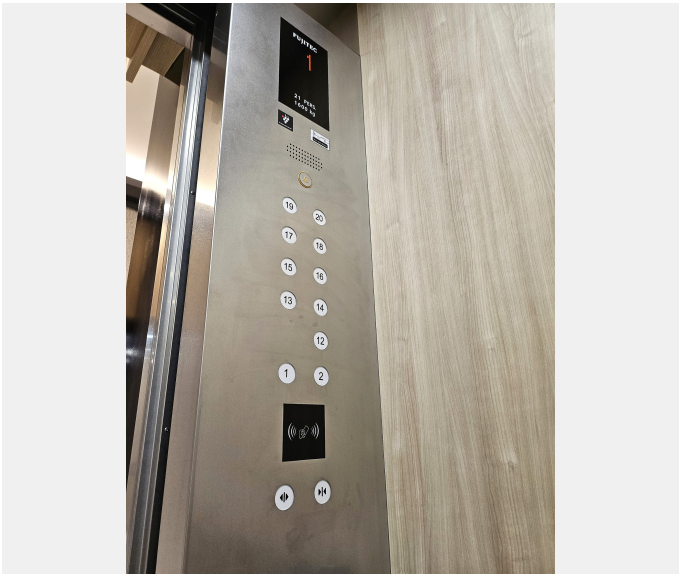
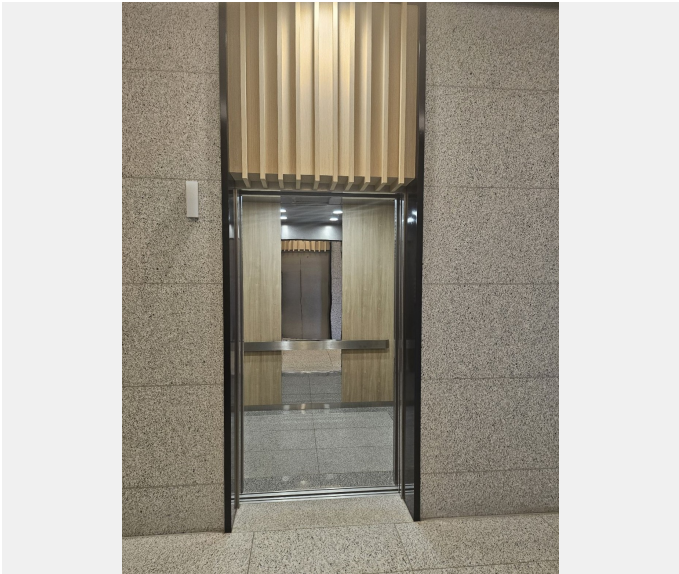
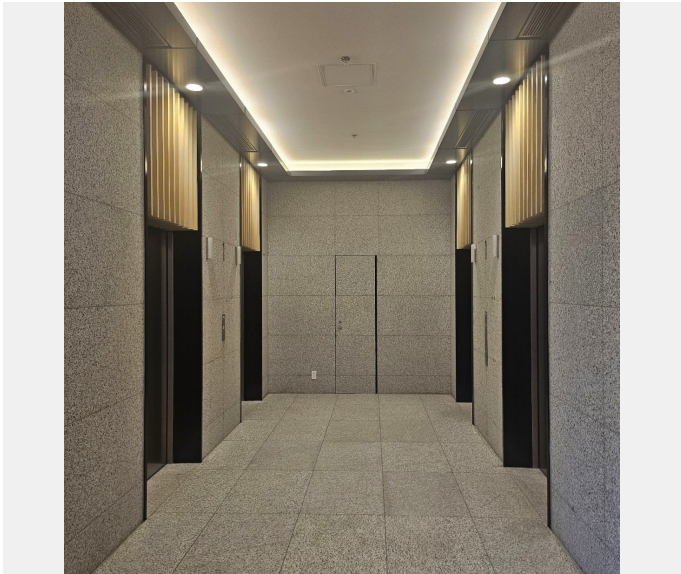
※ The certification of LEED is an international standard to evaluate the sustainability of buildings. It is provided as the good result of the evaluation of the energy efficiency and the environmental influencing factors.



Owner	Taisei Development Hanoi Co. Ltd.(Property Development local company wholly funded by Taisei Corporation)
Architect	Taisei Development Hanoi Co. Ltd.(Property Development local company wholly funded by Taisei Corporation)
Contractor	VINATA INTERNATIONAL Co., Ltd.(Construction local company wholly owned by Taisei Corporation)



Building name	Location	Completion	Total units
TAISEI SQUARE HANOI	Hanoi, Vietnam	2024	Elevator 10





Building name	Location	Completion	Total units
TAISEI SQUARE HANOI	Hanoi, Vietnam	2024	Elevator 10

Specifications
Elevator

Model	Use	Capacity (kg)	Capacity (person)	Speed (m/min)	Stop number of floors (floor)	unit
ELSIA	Passenger	1600	24	240	11	4
ZEXIA	Passenger	1600	24	180	12	4
ZEXIA	Service	1600	-	150	25	1
REXIA	Passenger	1600	30	60	5	1