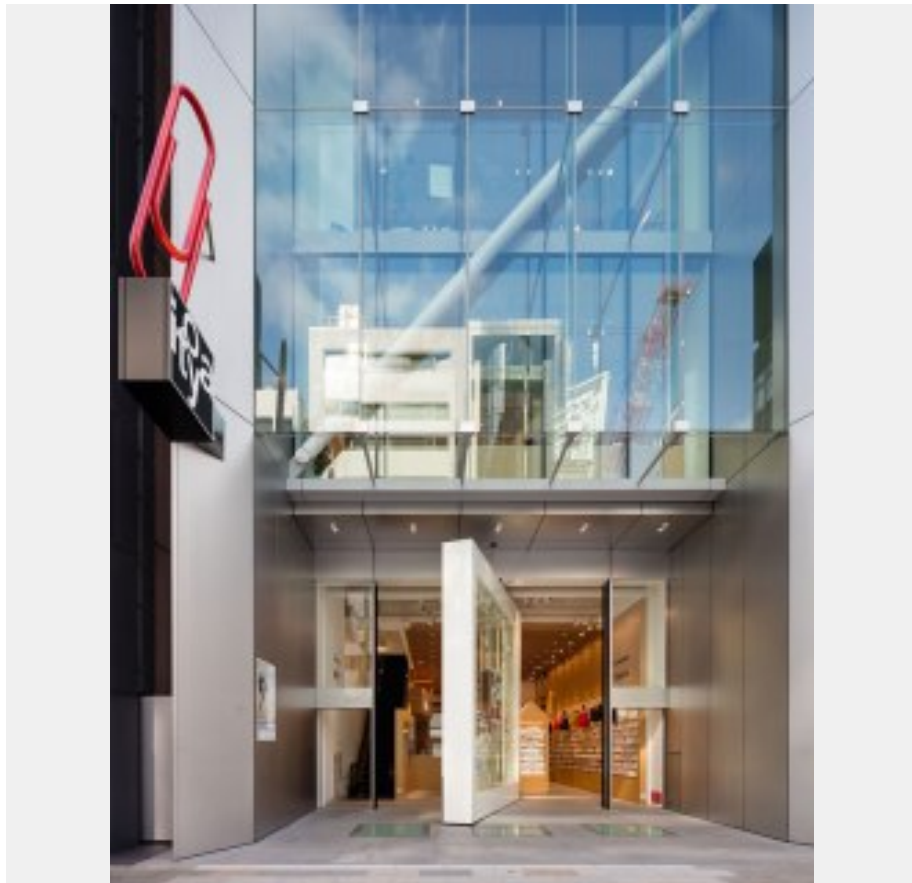
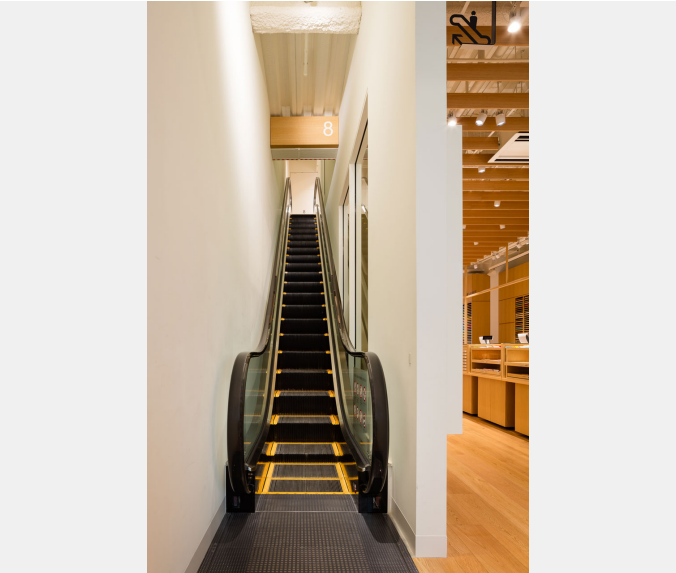


Ginza Itoya is a company specializing in the sales of various stationery products. The company's first shop was established in 1907. In the 111th year after the establishment of that first shop, the company's new headquarters was built in Ginza, Tokyo. The new headquarters building is composed of 12 floors above ground and one underground. In Ginza Itoya's headquarters, numerous products are displayed like paintings and sculptures in art galleries. Ginza Itoya's prominent display of their products is based on their concept of "Goods to Support People's Work." In this gallery-like headquarters, seven Fujitec escalators were installed.



Building name	Location	Completion	Total units
Ginza Itoya	Ginza, Tokyo	2015	Escalator 7





Building name

Ginza Itoya

Location

Ginza, Tokyo

Completion

2015

Total units

Escalator 7

Specifications

Escalator

Model	Type	Step width (mm)	Rise (mm)	Incline (degree)	unit
Slim Fit	S	1000	6000	35	1
Slim Fit	S	600	4500	35	6