



Building name

Jamieson Place

Location

Calgary, Canada

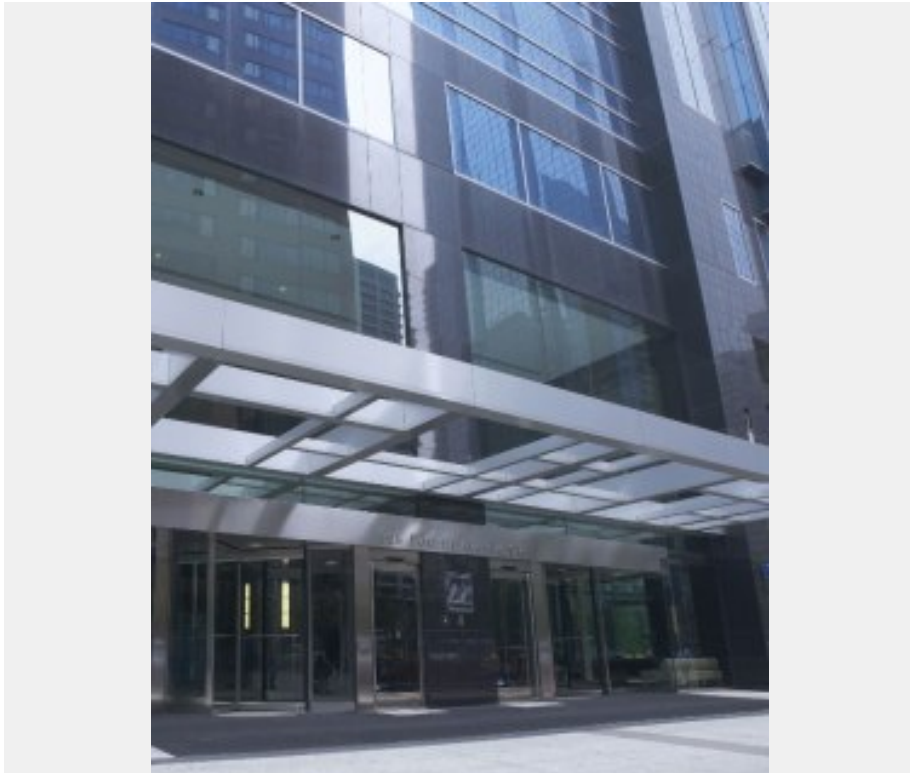
Completion

2009

Total units

Elevator 17  
Escalator 2

Jamieson Place is an office building located in the center of Calgary, the largest city in Alberta Province, Canada. This office building is composed of 37 floors above ground and five underground, and having the latest systems and facilities for office building management. Here, Fujitec has installed 17 elevator and two escalator units. The sophisticatedly designed elevators are equipped with touch-sensitive operating panels and fixtures. Elevator halls and car interiors are extensively finished with polished natural stone panels and high-grade stainless steel, creating a sophisticated mood.



Owner	British Columbia Investment Management Corporation
Architect	Gibbs Gabe Architects
Contractor	EllisDon Constrution Services Inc.



Building name

Jamieson Place

Location

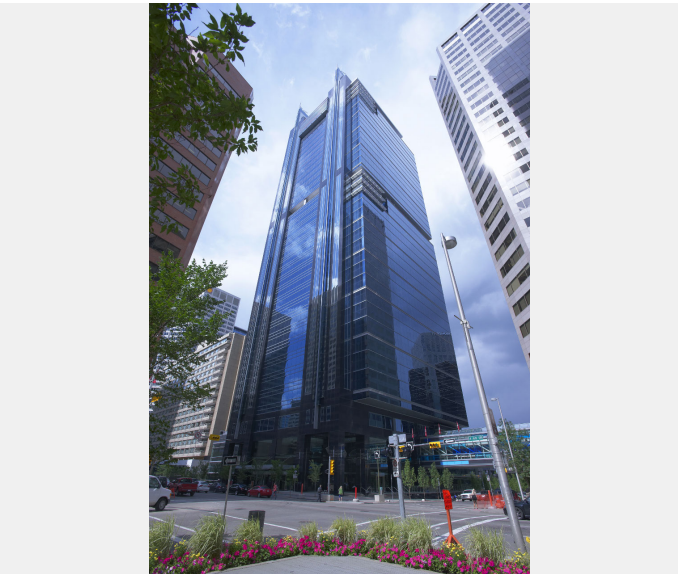
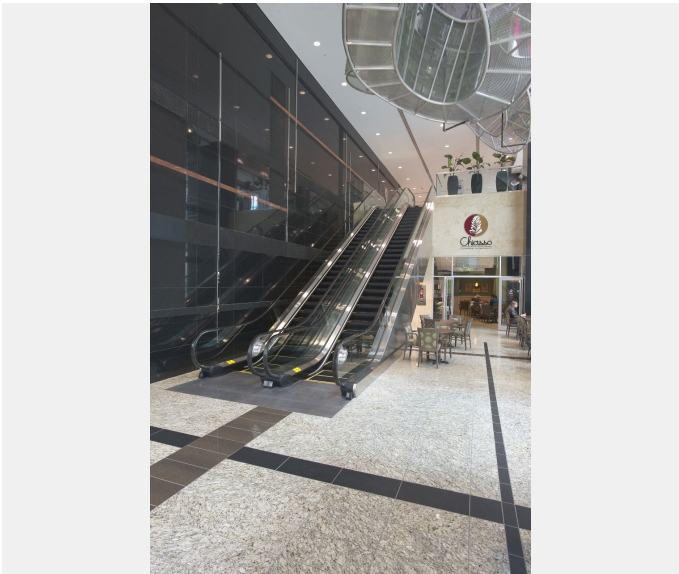
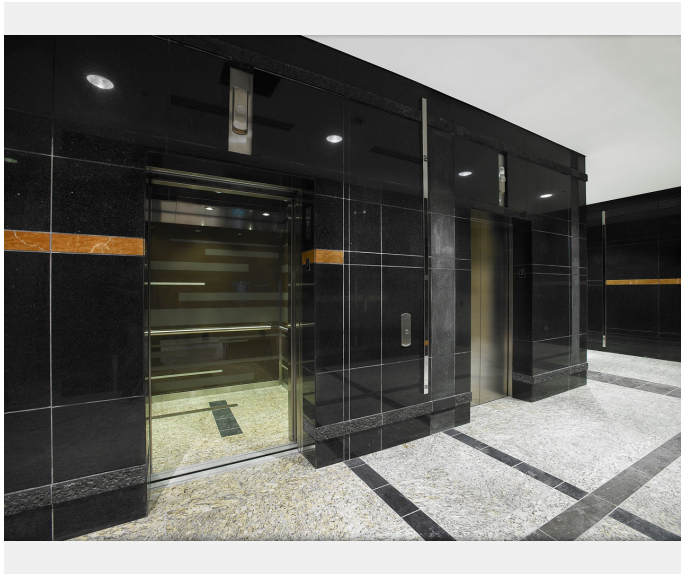
Calgary, Canada

Completion

2009

Total units

Elevator 17  
Escalator 2





Building name	Location	Completion	Total units
Jamieson Place	Calgary, Canada	2009	Elevator 17 Escalator 2

Specifications  
Elevator

Model	Use	Capacity (kg)	Capacity (person)	Speed (m/min)	Stop number of floors (floor)	unit
AC-GL	Passenger	1600	21	300	18	7
AC-GL	Passenger	1600	21	210	19	7
AC-GD	Passenger	1600	21	105	7	2
AC-GL	Service	2270	30	210	41	1

Escalator

Model	Type	Step width (mm)	Rise (mm)	Incline (degree)	unit
GS8000NX	S	1000	5500	30	2