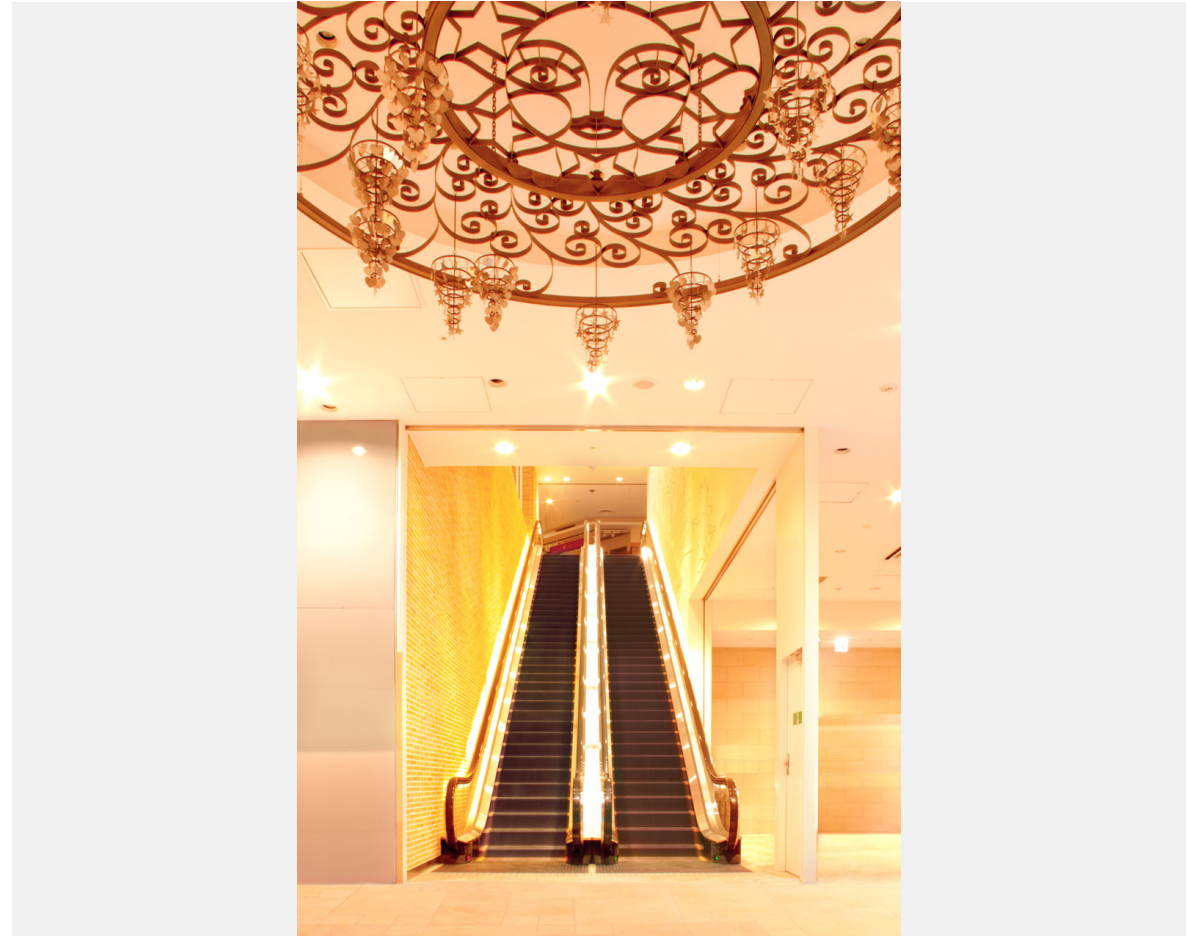
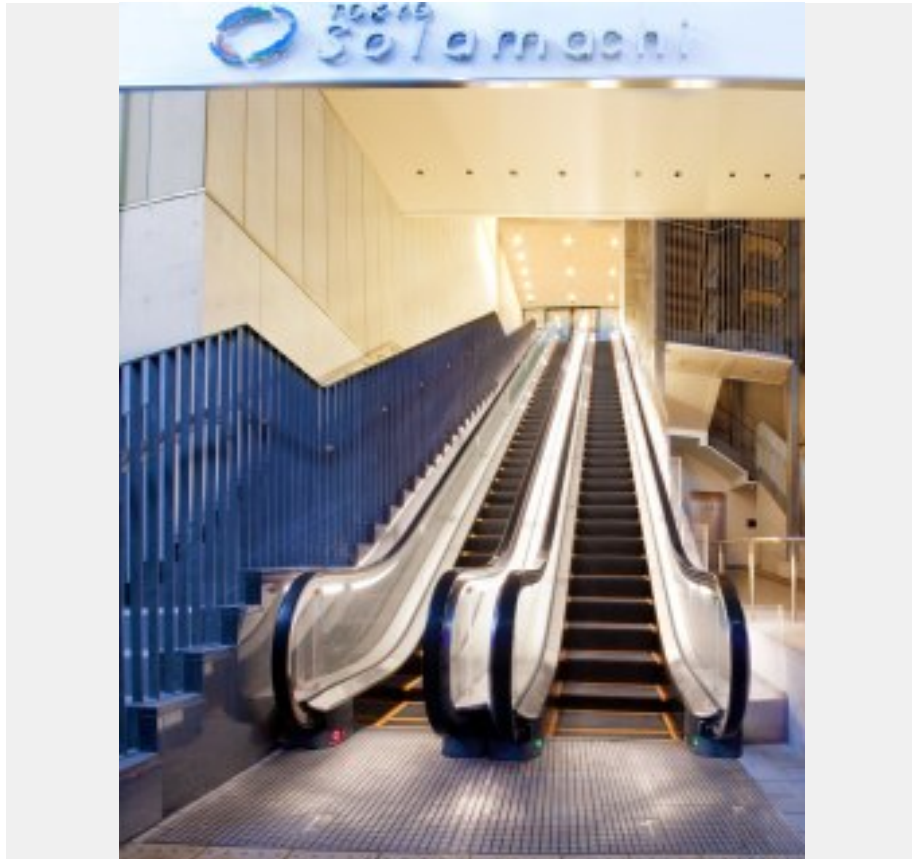


Adjacent to Tokyo Skytree®, Tokyo Solamachi® has direct access from Tokyo Skytree Station on the Tobu Skytree Line. Many tourists visit this eight-story commercial facility with two underground levels, which houses facilities such as restaurants, retail stores and an aquarium. The escalators here use interior panels made of transparent reinforced glass and LED technology for lighting below the handrails to help create brightness and openness.



Owner	Tobu Railway Co., Ltd.
Architect	Nikken Sekkei Ltd.
Contractor	Taisei Corporation

FUJITEC

Building name

Tokyo Solamachi®

Location

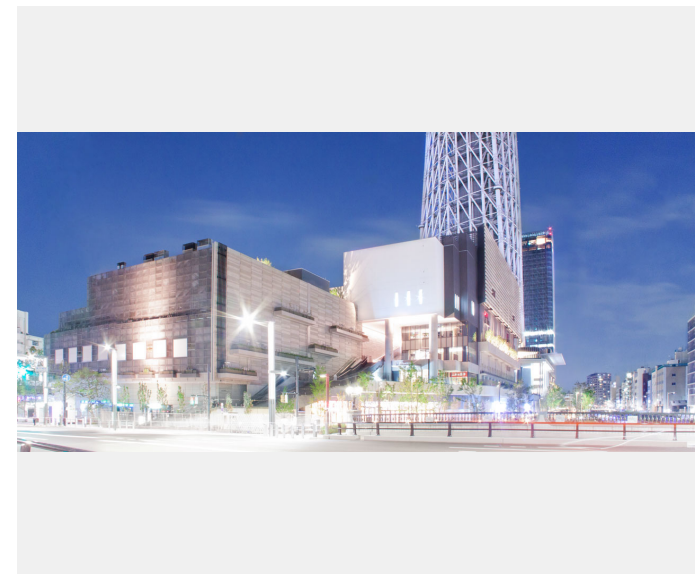
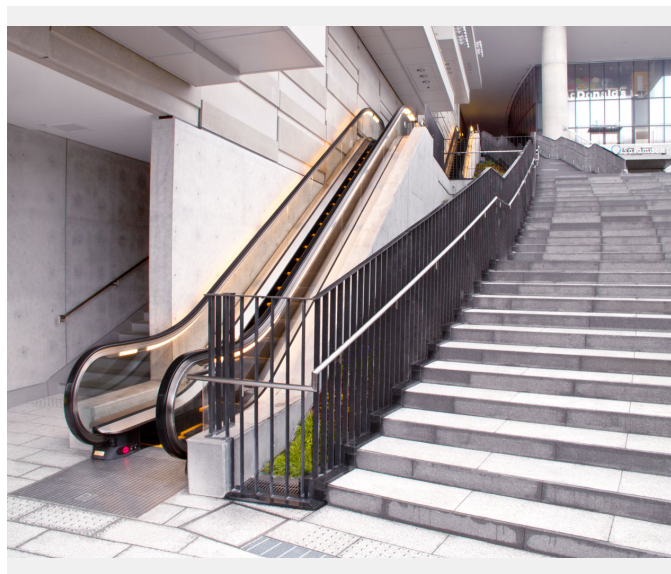
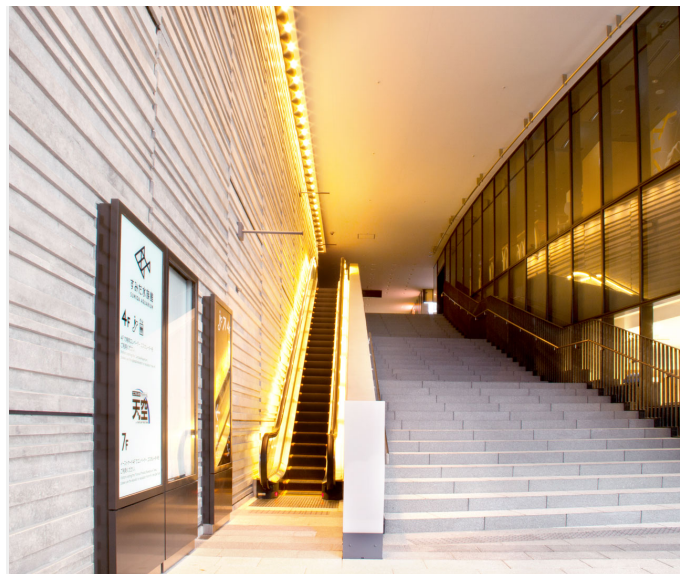
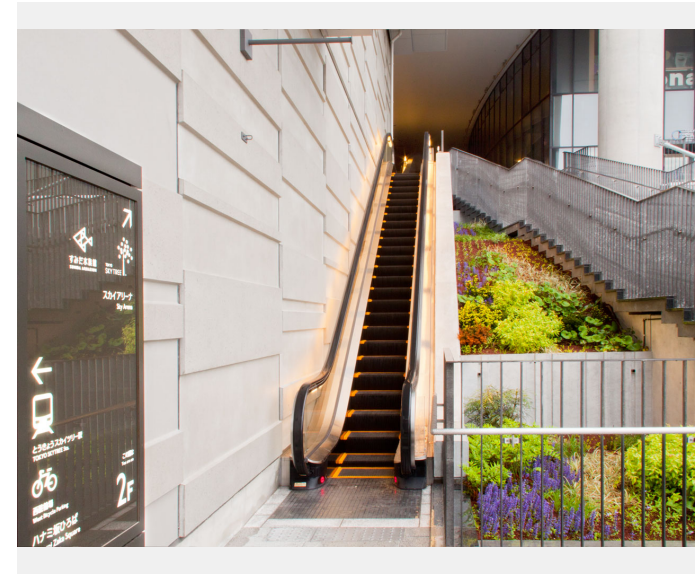
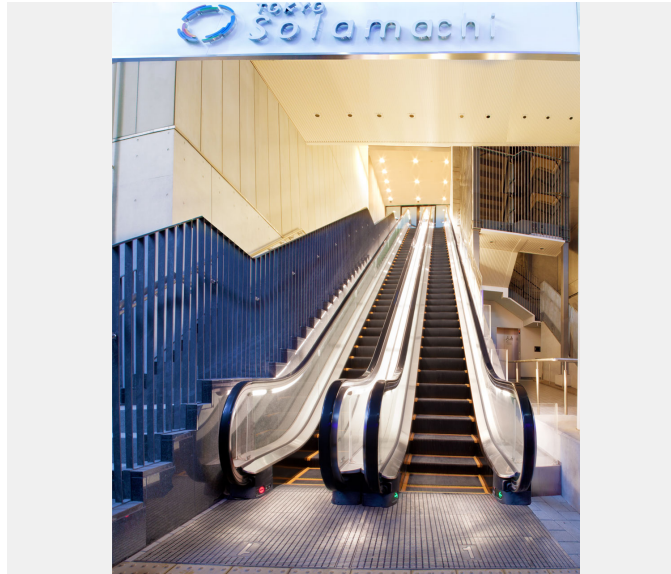
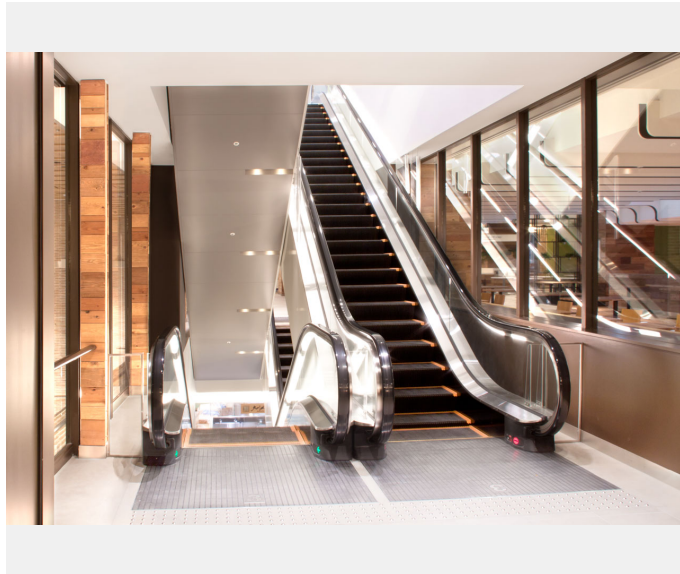
Sumida, Tokyo

Completion

2012

Total units

Escalator 16





Building name

Tokyo Solamachi®

Location

Sumida, Tokyo

Completion

2012

Total units

Escalator 16

## Specifications

## Escalator

Model	Type	Step width (mm)	Rise (mm)	Incline (degree)	unit
GS-NX	F	600	4650	30	2
GS-NX	F	1000	7250	30	2
GS-NX	F	1000	5000	30	2
GS-NX	F	1000	5300	30	2
GS-NX	F	600	7900	30	1
GS-NX	F	600	3100	30	1
GS-NX	F	600	4350	30	1
GS-NX	F	600	5000	30	3
GS-NX	F	600	5300	30	1
GS-NX	F	1000	7900	30	1