

Building name	Location	Completion	Total units
V city	Hong Kong	2013	Elevator 24 Escalator 21

V city is a shopping mall located in the New Territories in Hong Kong. This shopping mall was built to present a new modernistic life style. In order to better serve visitors to this approximately 28,000-m2 shopping mall, Fujitec elevators and escalators were installed. Fujitec observation elevator cars are brightly illuminated, creating an air of openness. Fujitec escalators with their elegant form standout in the lively atmosphere of people.



Owner	Wetland Park Management Service Ltd
Architect	Ronald Lu & Partners (HK) Ltd
Contractor	Yei Fai Construction Co. Ltd.



FUJITEC

Building name

V city

Location

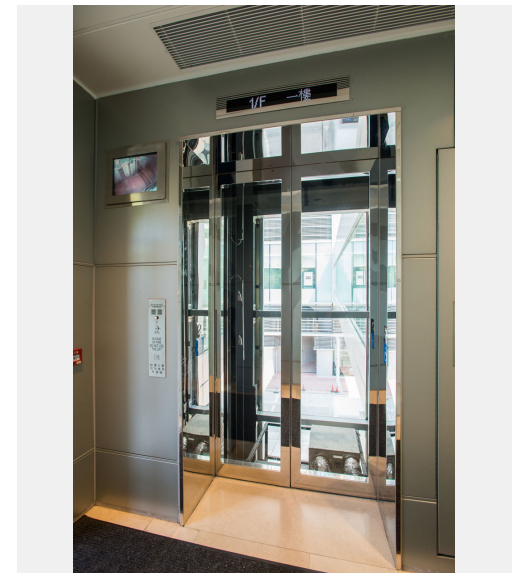
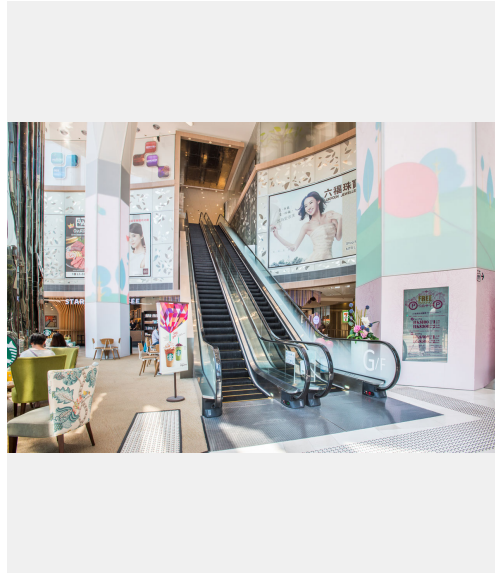
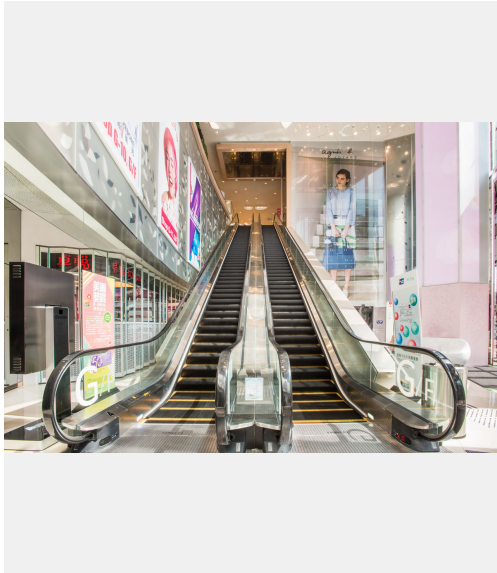
Hong Kong

Completion

2013

Total units

Elevator 24  
Escalator 21





Building name

V city

Location

Hong Kong

Completion

2013

Total units

Elevator 24

Escalator 21

## Specifications

## Elevator

Model	Use	Capacity (kg)	Capacity (person)	Speed (m/min)	Stop number of floors (floor)	unit
BELTA	Servive	1000	13	96	4	1
BELTA	Passenger	1600	21	96	3	2
BELTA	Servive	1600	21	96	4	1
BELTA	Servive	1600	21	96	5	3
BELTA	Servive	1600	21	96	5	1
BELTA	Passenger	1600	21	96	4	2
BELTA	Servive	1600	21	96	4	5
AC-GL	Freight	5200		96	2	1
BELTA	Servive	1600	21	96	3	1
BELTA	Passenger	1250	17	96	2	2
BELTA	Passenger	1600	21	96	2	2
BELTA	Passenger	1250	17	96	3	1
BELTA	Passenger	1600	21	96	2	1
BELTA	Servive	1600	21	105	6	1

## Escalator

Model	Type	Step width (mm)	Rise (mm)	Incline (degree)	unit
GS8000-NX	S	1000	10000	30	2
GS8000-NX	S	1000	9350	30	2
GS8000-NX	S	1000	4700	30	2
GS8000-NX	S	1000	3850	30	2
GS8000-NX	S	1000	5650	35	2
GS8000-NX	S	1000	5775	35	2
GS8000-NX	S	1000	4750	35	2
GS8000-NX	S	1000	4800	30	2
GS8000-NX	S	1000	4750	30	2
GS8000-NX	S	1000	10000	30	1
GS8000-NX	S	1000	3900	30	2