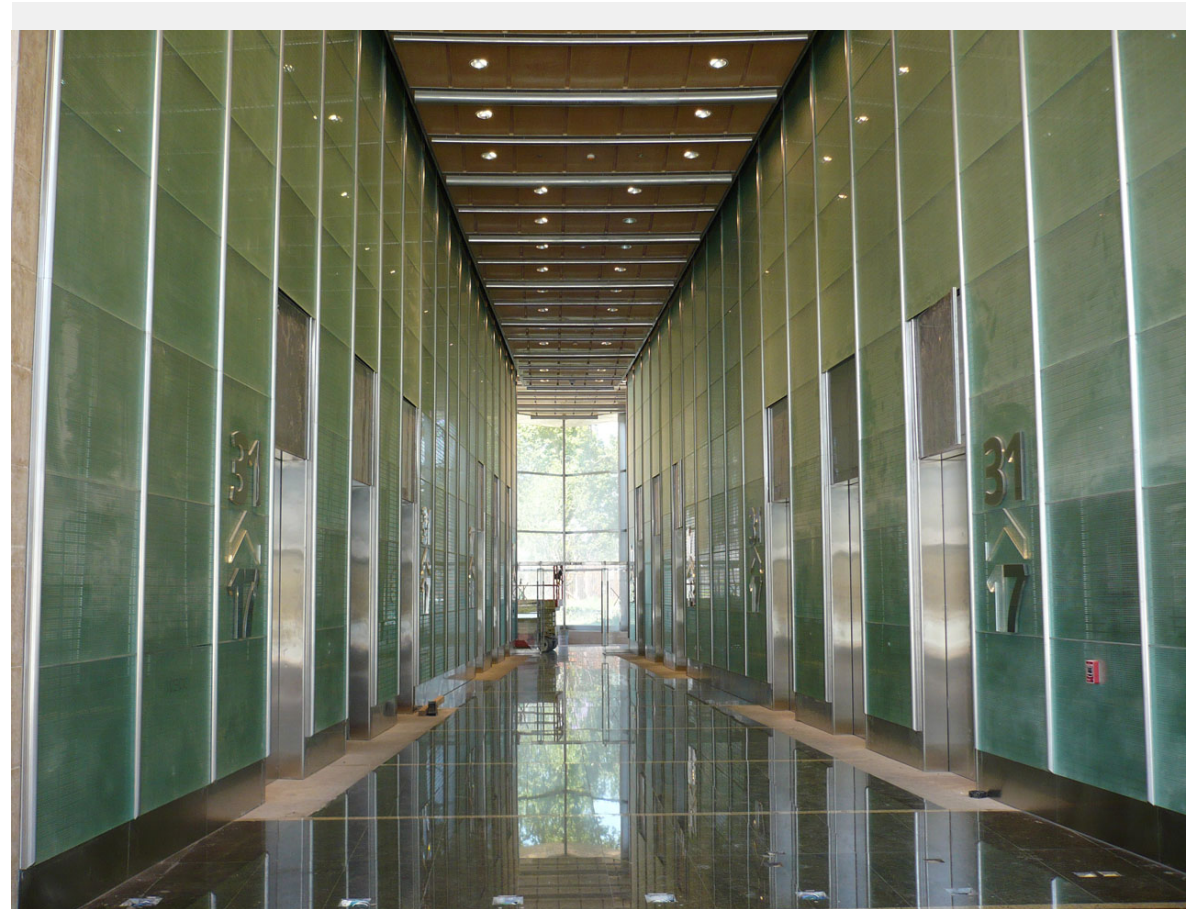
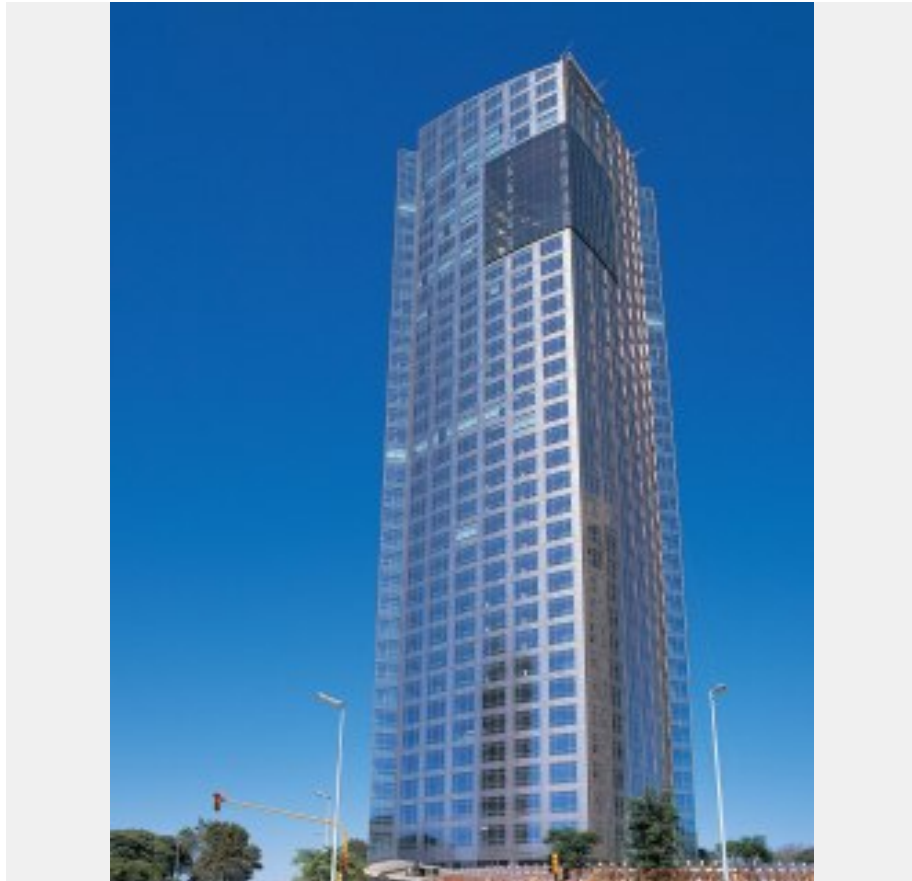


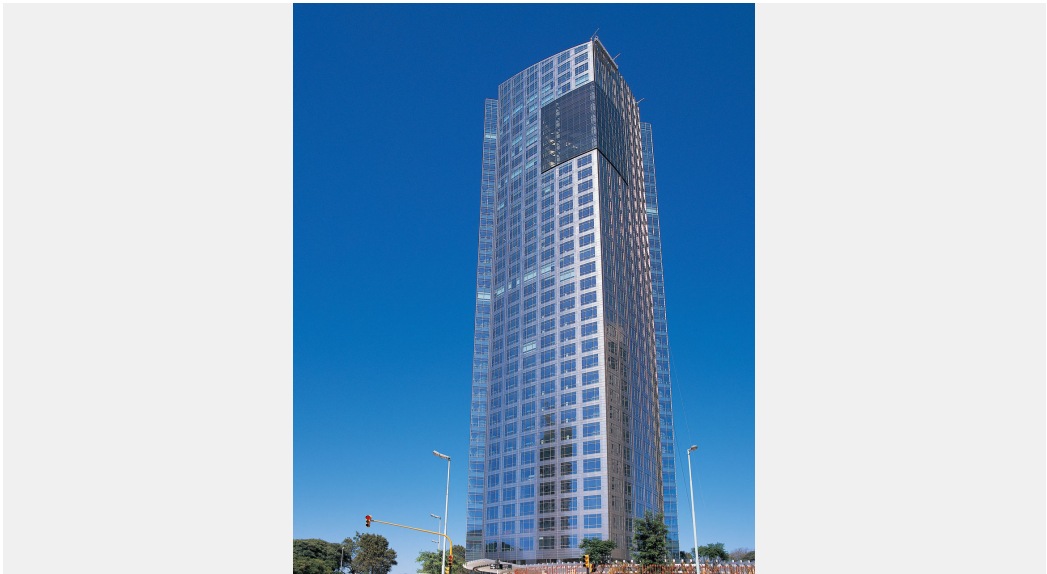
Buenos Aires is one of the major urban cities in South America.

Torre Repsol YPF is a 36-story building, 160 meters tall, built in the Puerto Madero District near the mouth of the Rio de la Plata. The tower was designed by the world famous architect, Cesar Pelli. It has a unique outside appearance with indoor gardens on the upper levels. In this building, 16 Fujitec elevators including 300 mpm high-speed models are operative. With translucent resin material used for the car ceiling; the cab space is filled with a soft light. Furthermore, the interior walls and floor are luxuriously finished with a generous amount of granite.



Owner	Repsol YPF Ltd.
Architect	Cesar Pelli & Associates Architects Ltd.
Contractor	Bovis Lend Lease S.A. Ltd.

Building name	Location	Completion	Total units
Torre Repsol YPF	Buenos Aires, Argentina	2008	Elevator 16





Building name	Location	Completion	Total units
Torre Repsol YPF	Buenos Aires, Argentina	2008	Elevator 16

Specifications
Elevator

Model	Use	Capacity (kg)	Capacity (person)	Speed (m/min)	Stop number of floors (floor)	unit
AC-GL	Passenger	1500	20	300	18	5
AC-GL	Passenger	1500	20	300	19	1
AC-GL	Service	1800	24	300	19	1
AC-GL	Passenger	1500	20	210	18	5
AC-GL	Passenger	1500	20	210	19	1
AC-GL	Passenger	1800	24	210	18	1
AC-GD	Service	1200	16	60	3	2