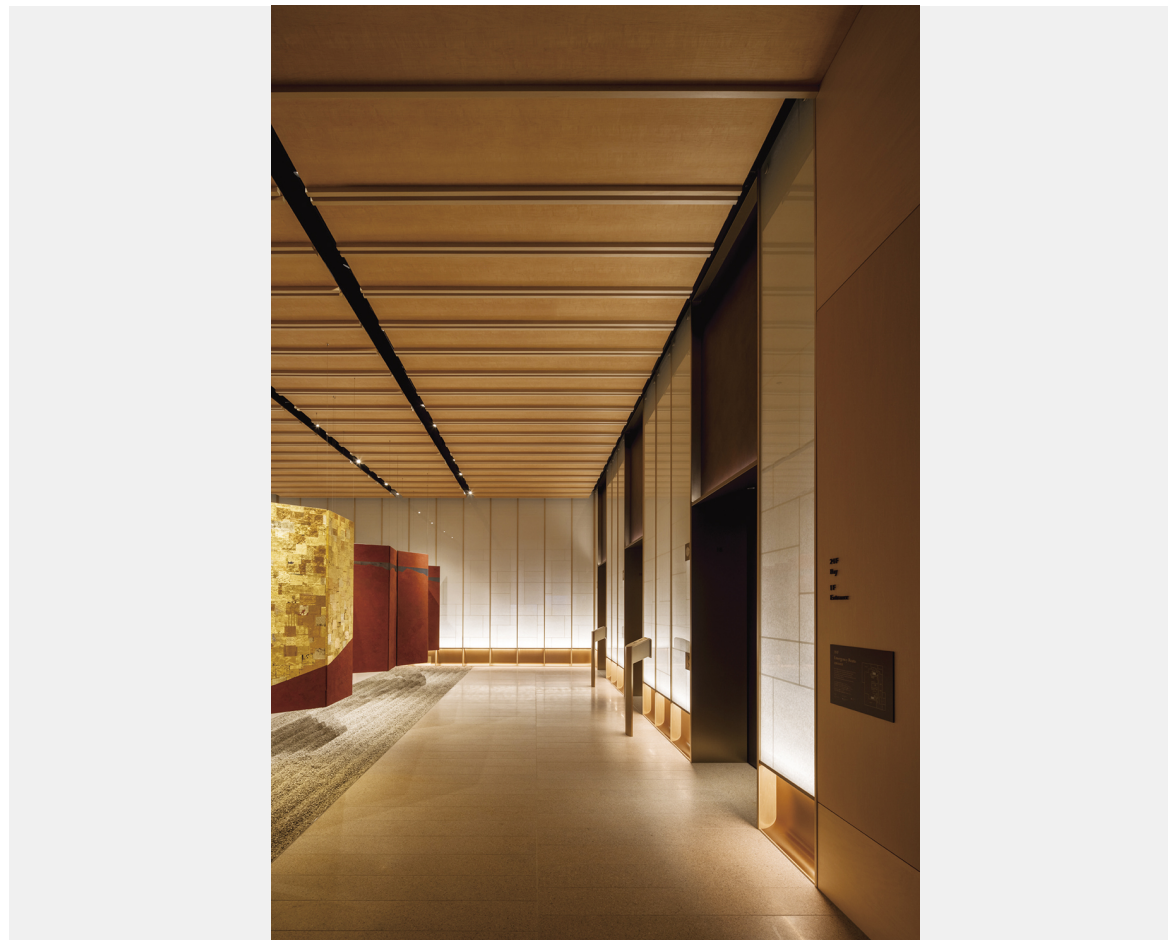


"The Ritz-Carlton, Fukuoka" built on the land where an elementary school had existed in the Chuou-ku of Fukuoka prefecture has adopted the unique interior designs of a Japanese traditional craftwork, "Hakataori." Guests and visitors can experience the comfortable and luxurious atmosphere in this hotel. The hotel is located in the center of Fukuoka city. This attractive hotel stands in the vibrant city and is full of restaurants, bars, and a spa to provide guests and visitors with excellent services and special time.

In this hotel, Fujitec installed eight (8) elevators. The elevators in the hotel space with the relaxing atmosphere created by indirect lights have the fixtures which convey a sense of luxury matching the landing-floor designs.

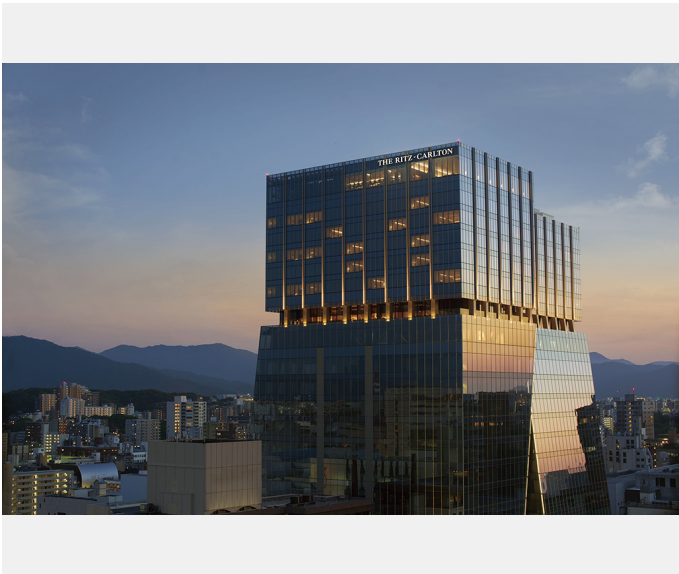
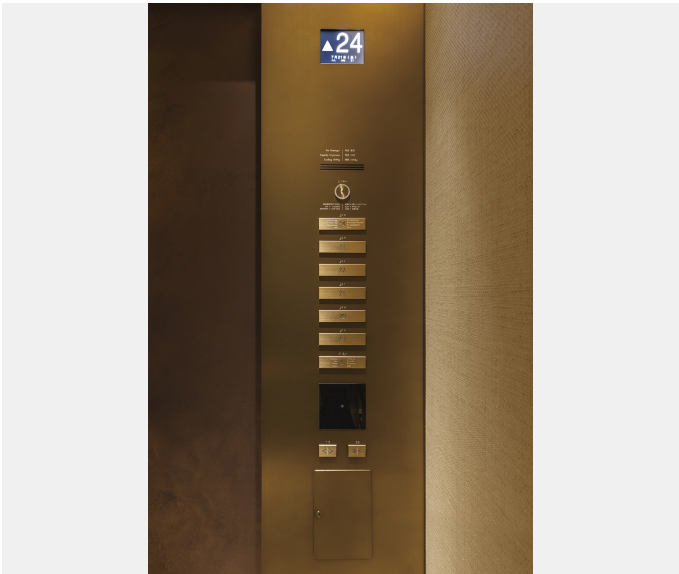
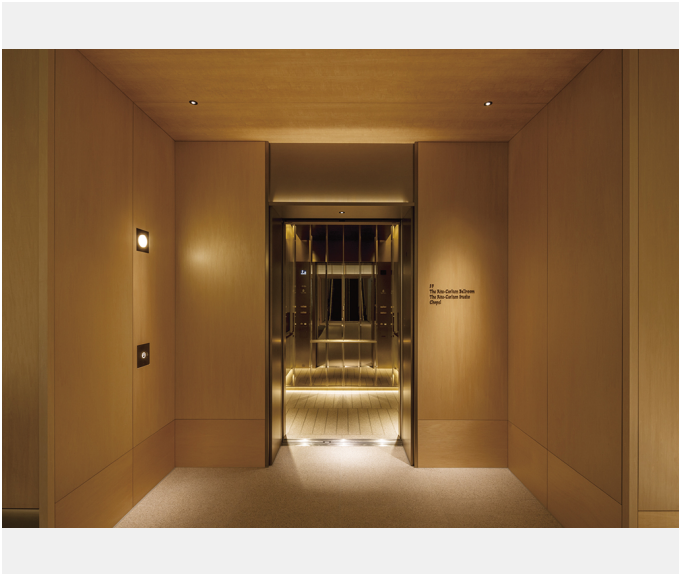
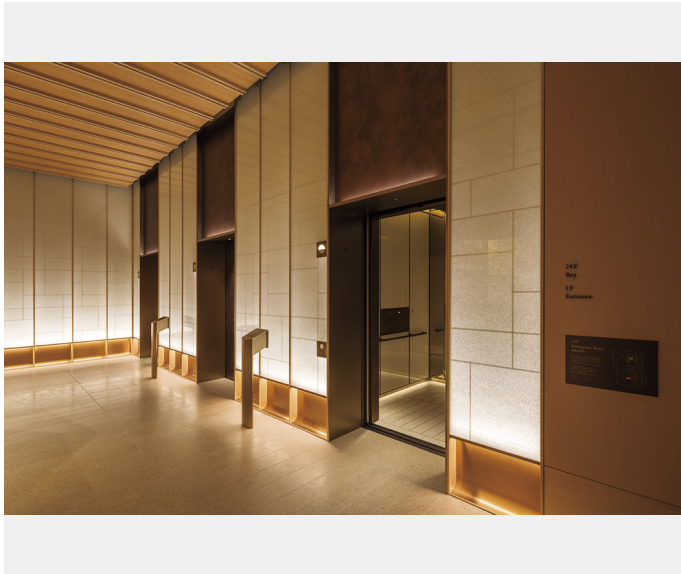
The elevators with the interior space created by the combination of the soft illumination of down-lights and the flagstone-like floor provide a very comfortable movement to the guests and visitors.



Owner	Daimyo Project TMK
Architect	KUME SEKKEI co.ltd. /JUN Architectural Regional Planning Consultants
Contractor	SHIMIZU CORPORATION



Building name	Location	Completion	Total units
The Ritz-Carlton, Fukuoka	Fukuoka Prefecture	2023	Elevator 8





Building name	Location	Completion	Total units
The Ritz-Carlton, Fukuoka	Fukuoka Prefecture	2023	Elevator 8

Specifications  
Elevator

Model	Use	Capacity (kg)	Capacity (person)	Speed (m/min)	Stop number of floors (floor)	unit
PM-GL	passenger	1600	24	150	5	3
PM-GL	passenger	1600	24	105	7	3
Order XIOR	passenger	1600	24	45	2	1
Order XIOR	service	2000	30	105	8	1