



Building name

The Westin Yokohama／The Apartment Bay YOKOHAMA

Location

Kanagawa Prefecture

Completion

2022

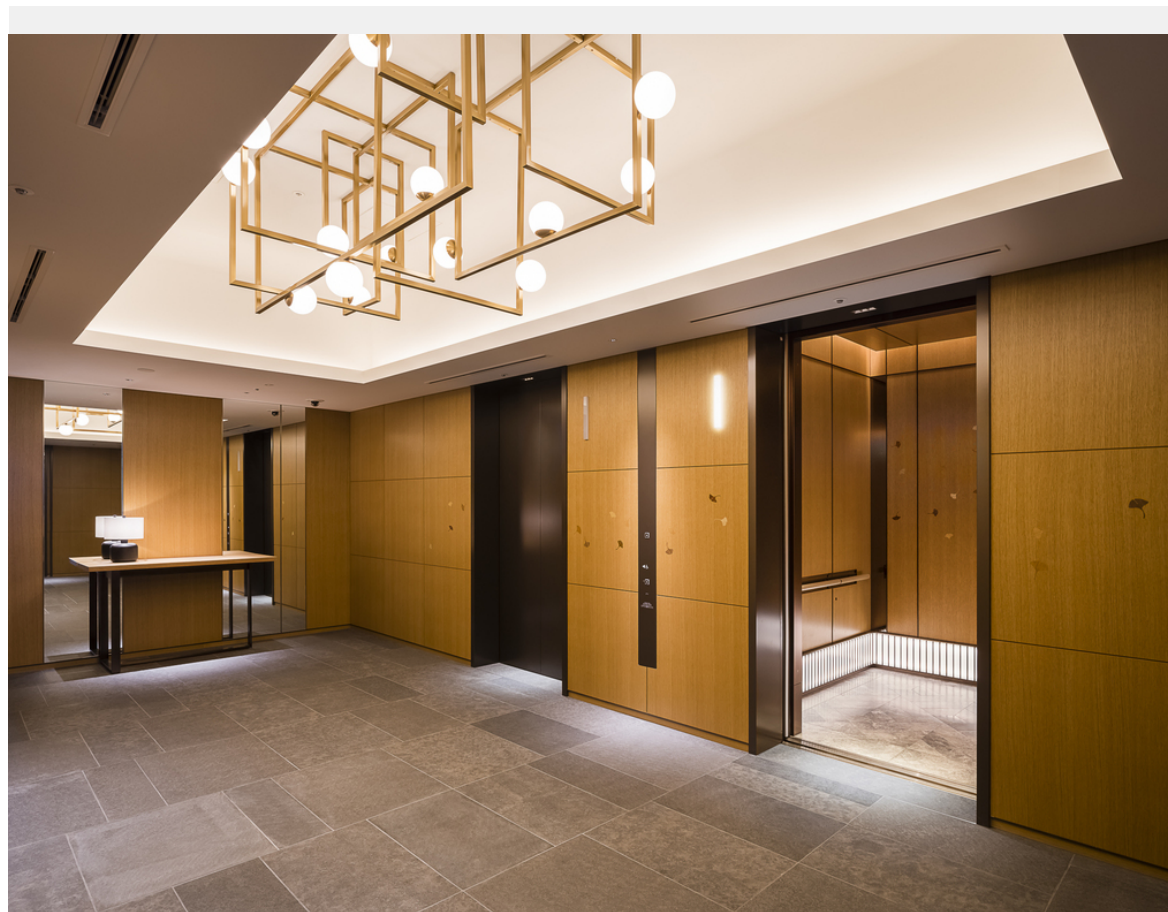
Total units

Elevator 14  
Escalator 4

The Westin Yokohama and The Apartment Bay YOKOHAMA are in the Minato Mirai 21 district. These are full-service hotels capable of offering various wellness programs to their guests.

In The Westin Yokohama, Fujitec installs eleven (11) elevators and four (4) escalators. The car interior and the elevator landing doors have the motif design of ginkgo leaves. The baseboard lighting inside the car gives the guests a soft overall impression matching the wood-grained pattern of the car interior walls.

In The Apartment Bay YOKOHAMA, Fujitec installs three (3) elevators. The car floor has cobblestone. The extensively used natural materials create a warm and welcoming atmosphere.



Owner	Sekisui House, Ltd. Operation Marriott International, Inc. Ken Corporation Ltd.
Architect	NIHON SEKKEI, INC.
Contractor	Takenaka Corporation



Building name

The Westin Yokohama／The Apartment Bay YOKOHAMA

Location

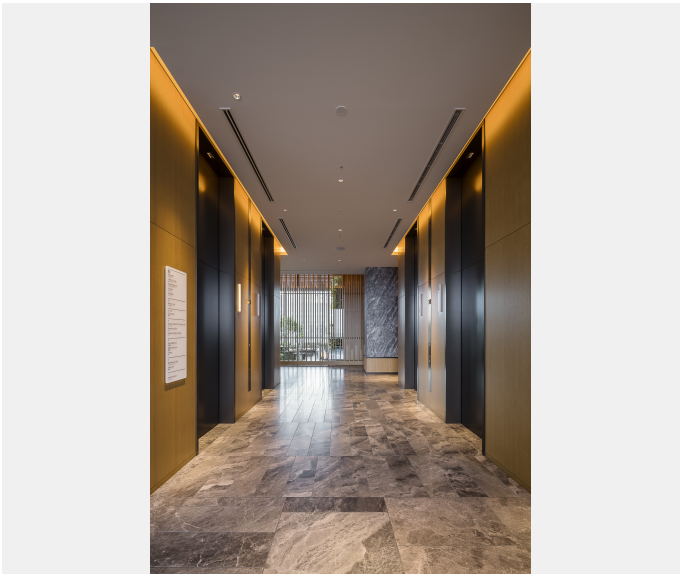
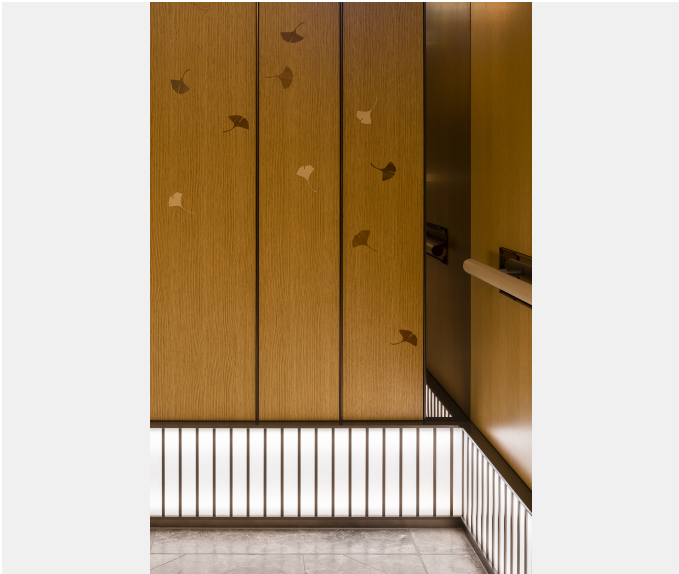
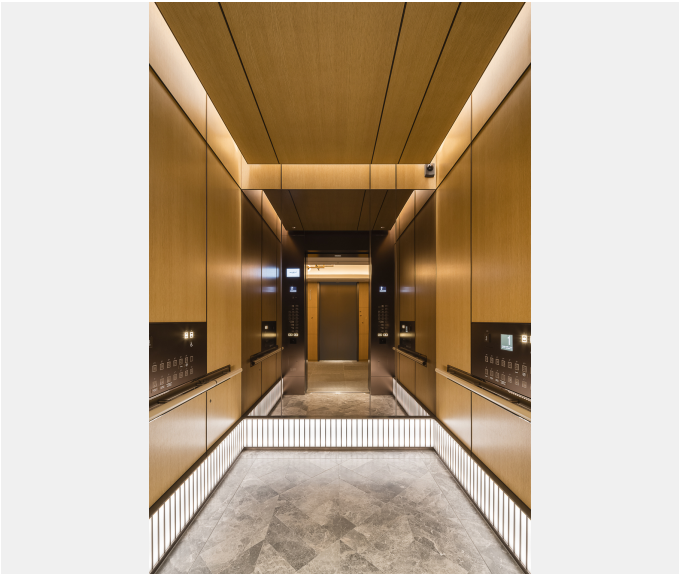
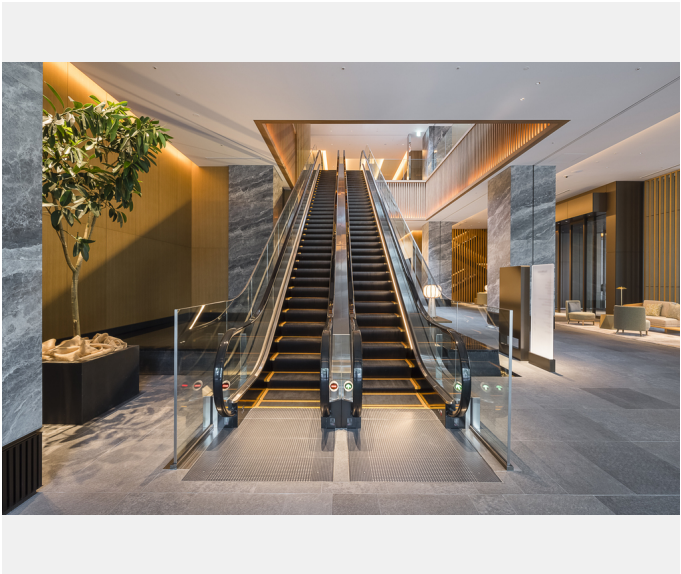
Kanagawa Prefecture

Completion

2022

Total units

Elevator 14  
Escalator 4







Building name	Location	Completion	Total units
The Westin Yokohama／The Apartment Bay YOKOHAMA	Kanagawa Prefecture	2022	Elevator 14 Escalator 4

## Specifications Elevator

Model	Use	Capacity (kg)	Capacity (person)	Speed (m/min)	Stop number of floors (floor)	unit
XIOR	passenger	900	13	45	2	1
Order XIOR	service	1600	24	105	5	1
PM-GL	passenger	1600	24	210	15	4
PM-GL	passenger	1600	24	300	6	2
PM-GL	passenger	1000	15	150	10	2
PM-GL	service	2000	30	180	23	1
PM-GL	service	1600	24	180	23	1
PM-GL	service	1600	24	180	16	2

## Escalator

Model	Type	Step width (mm)	Rise (mm)	Incline (degree)	unit
Slim Fit	S	800	7000	30	2
Slim Fit	S	800	5000	30	2