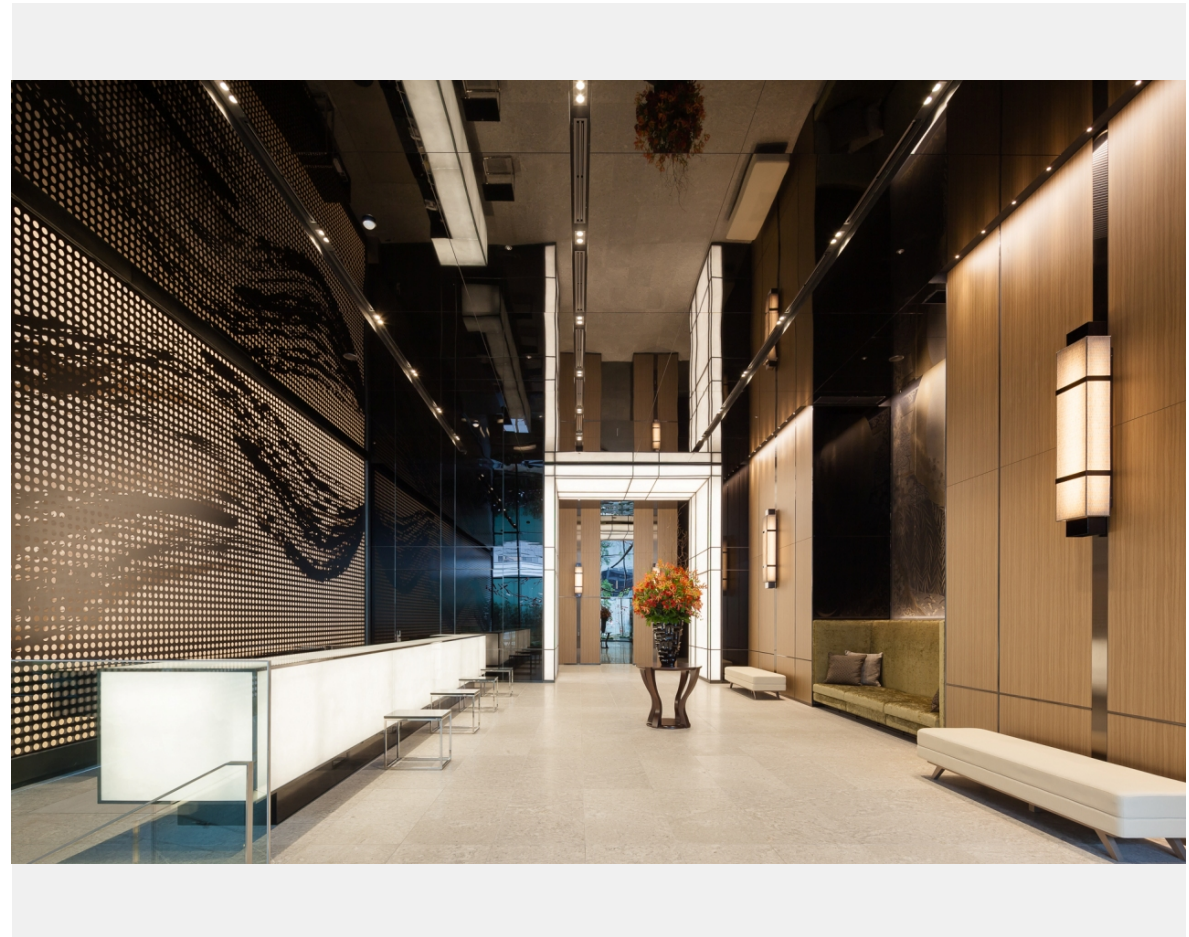
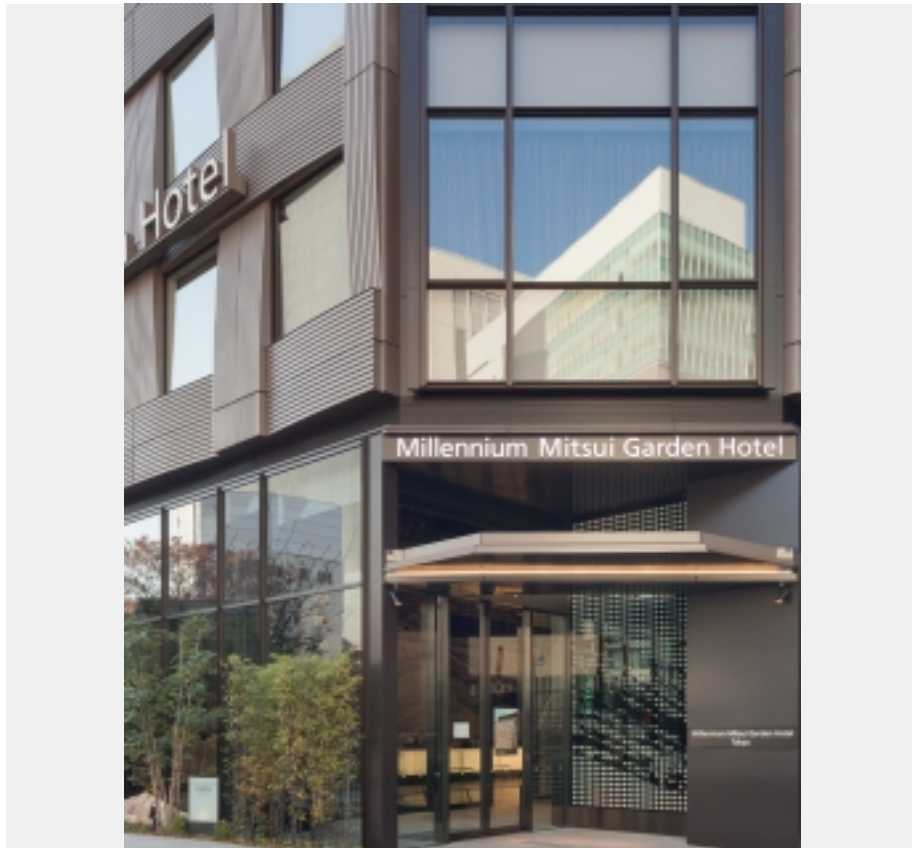


Millennium Mitsui Garden Hotel Tokyo is located in Ginza, one of the busiest shopping districts in Japan. The hotel with 14 floors above ground and a basement is close to Ginza 4-chome intersection, the center of Ginza, and the Kabuki-za Theater, making it an ideal accommodation for business and leisure. Both the exterior and interior are designed in traditional Japanese style to draw the attention of international visitors. Three elevators help guests reach their rooms. In the elevator hall, the exterior doors and landscape-oriented wall panels extending up to the ceiling have mirrored surfaces made of colored stainless steel. These elements combine with the design of the car interior walls to deliver a sense of unity with the entire hotel interior.



Owner	Hong Leong Group Ginza Specified Purpose Company
Architect	Kajima Corporation
Contractor	Kajima Corporation



Building name

Millennium Mitsui Garden Hotel Tokyo

Location

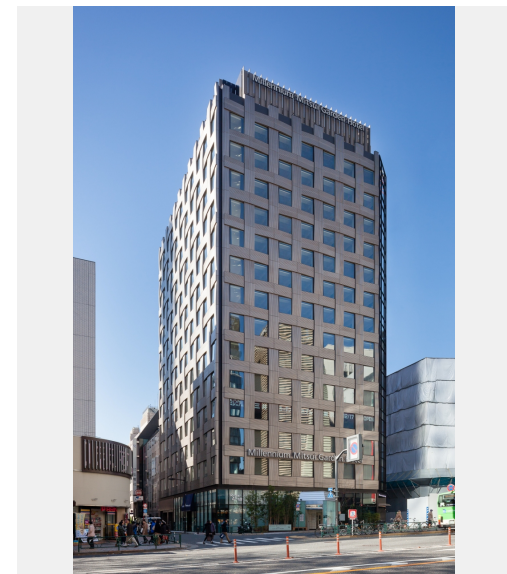
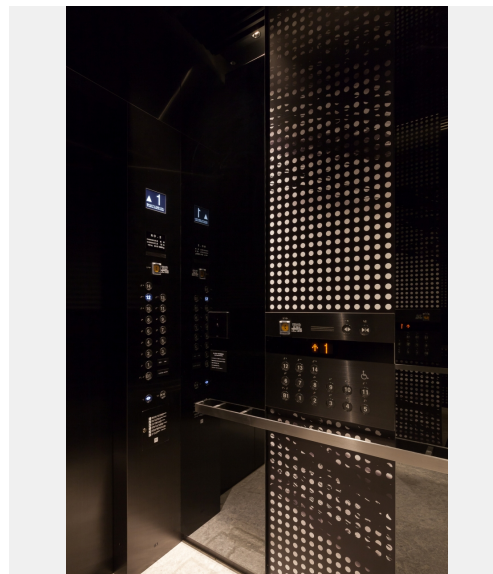
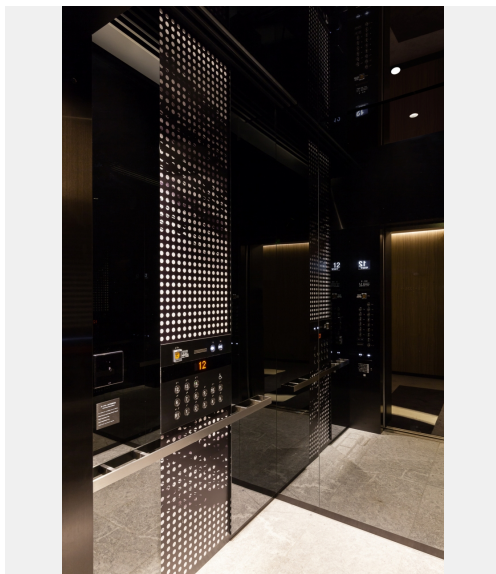
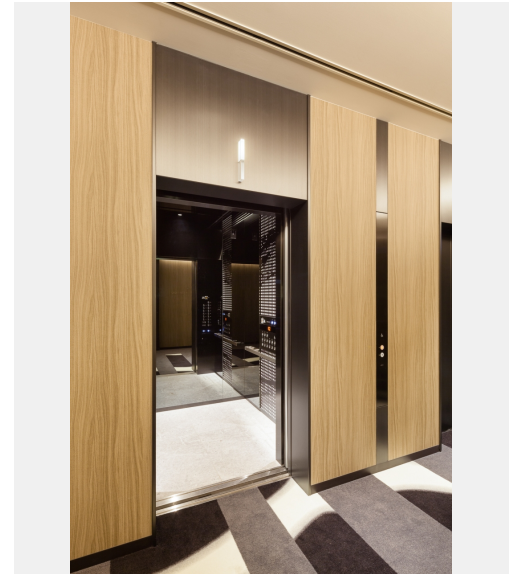
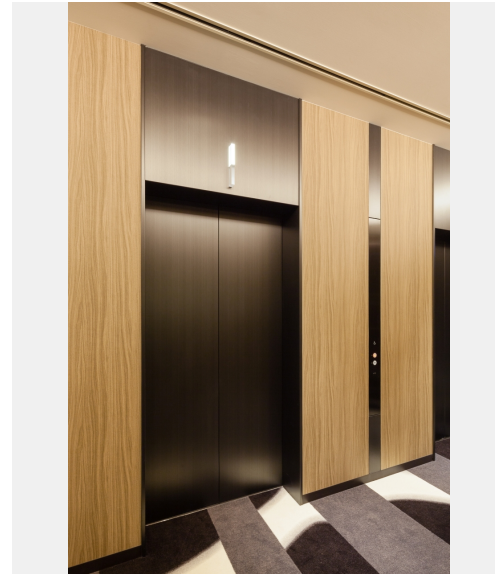
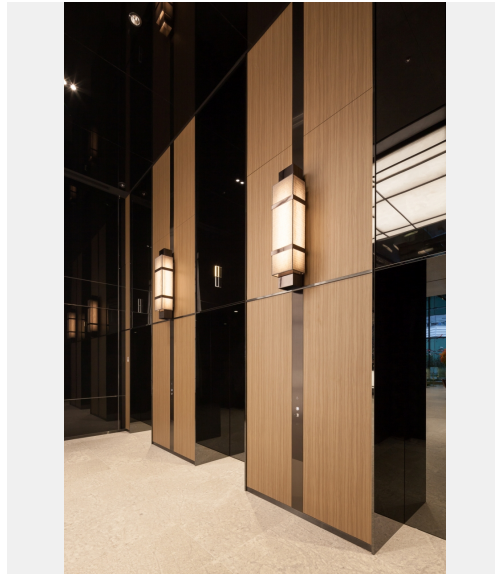
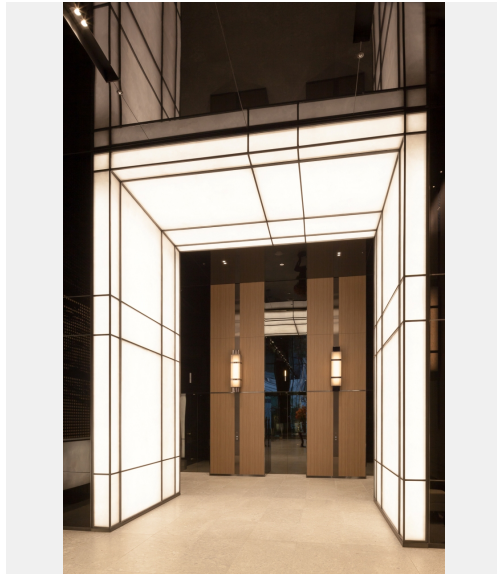
Ginza, Tokyo

Completion

2014

Total units

Elevator 4





Building name

Millennium Mitsui Garden Hotel Tokyo

Location

Ginza, Tokyo

Completion

2014

Total units

Elevator

4

## Specifications

### Elevator

Model	Use	Capacity (kg)	Capacity (person)	Speed (m/min)	Stop number of floors (floor)	unit
AC-GL	Passenger	1000	15	120	15	3
AC-GL	Service	1150	17	120	16	1