



Building name

Hyatt Regency Yokohama

Location

Kanagawa prefecture, Japan

Completion

2020

Total units

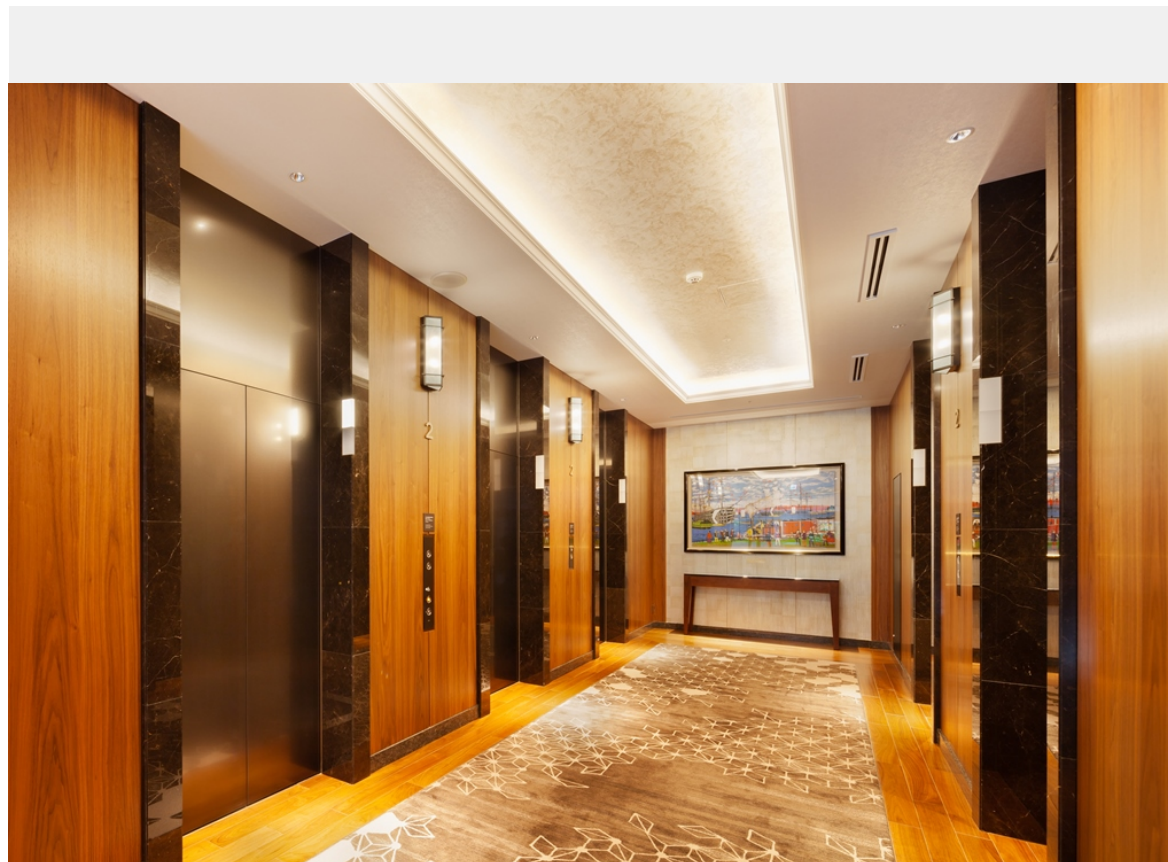
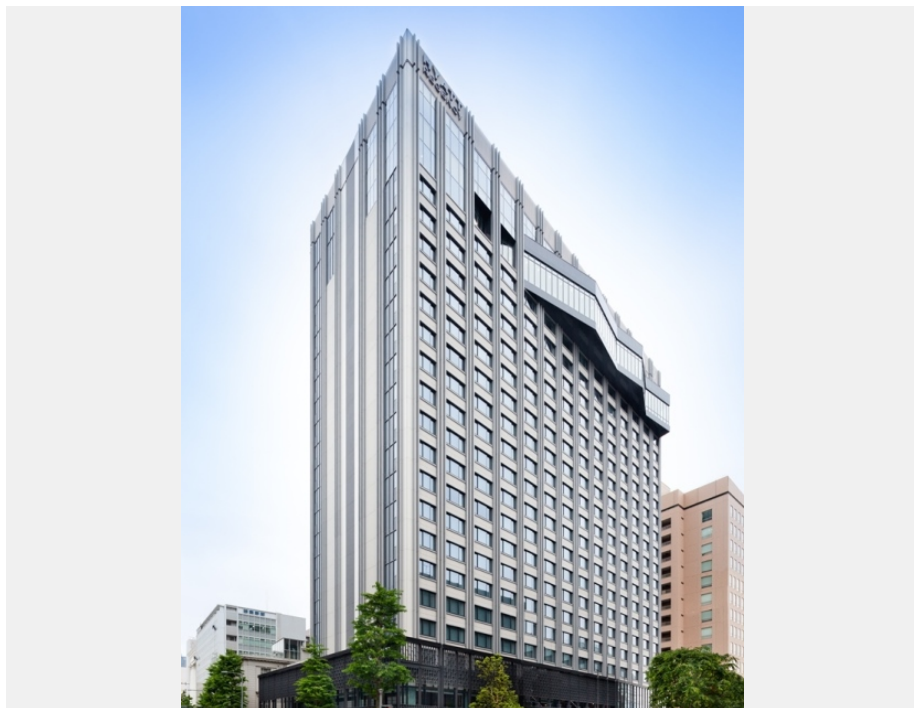
Elevator 7

Hyatt Regency Yokohama situated in Yamashita-cho in Yokohama city is a luxury hotel from which tourists can easily walk to famous sightseeing spots such as Chinatown, Yamashita Park, etc. and also to the business area in Minato Mirai 21 district.

This hotel provides various tourists with the very best service and hospitality, and welcomes them into the space created with the stylish design which is made from the image of Yokohama as "Harbor" and "Cross-Cultural Exchange."

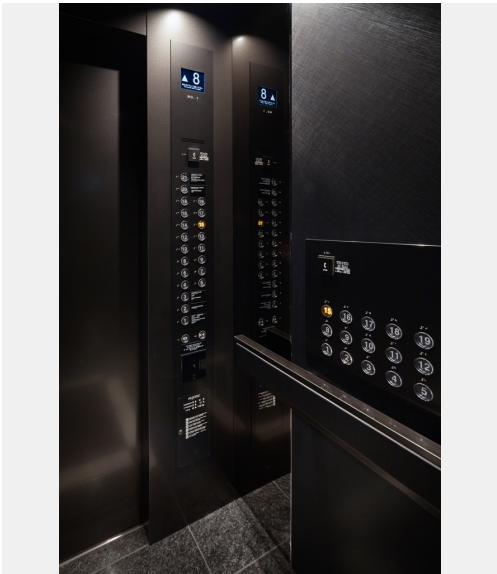
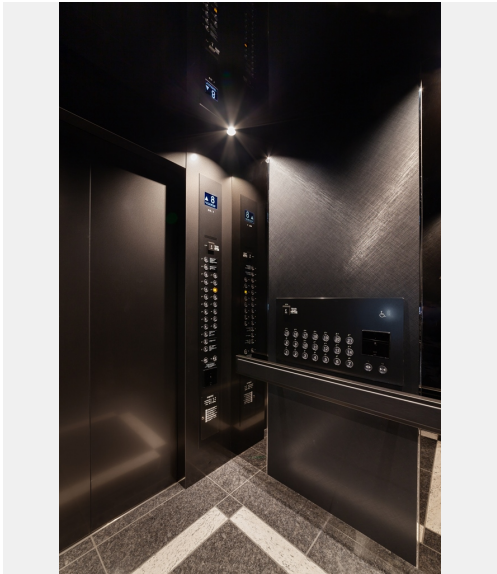
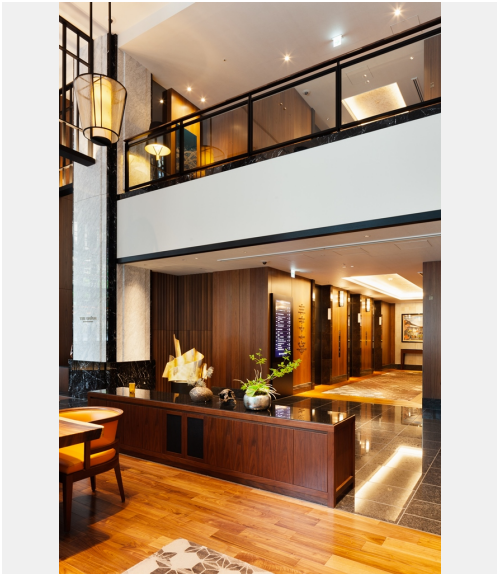
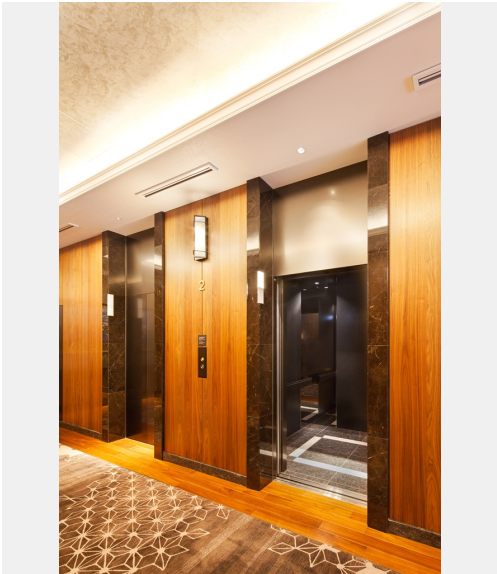
In this stylishly designed space, seven (7) units of Fujitec elevators are operating. The guest elevators have stainless-steel-made elevator operating panels with vibrator-finished surface, stainless-steel-made walls with mirror finish, colored steel ceiling with gloss finish, leather-wrapped handrails, and etc.

Black color is applied to the interior of the guest elevators. Difference of the surface finish of various parts and fixtures in the elevator creates different qualities of black color. The cross and reflex of the different qualities of black color creates a chic ambience and a gorgeous atmosphere inside the elevator.



Owner	Ken Corporation Ltd.
Architect	Kuniken Ltd.
Contractor	Fujita Corporation

Building name	Location	Completion	Total units
Hyatt Regency Yokohama	Kanagawa prefecture, Japan	2020	Elevator 7





Building name	Location	Completion	Total units
Hyatt Regency Yokohama	Kanagawa prefecture, Japan	2020	Elevator 7

Specifications

Elevator

Model	Use	Capacity (kg)	Capacity (person)	Speed (m/min)	Stop number of floors (floor)	unit
AC-GL	Passenger	1150	17	150	21	5
AC-GL	Service	1150	17	105	23	1
AC-GL	Passenger	900	13	105	22	1