



Building name

Hyatt Centric Kanazawa

Location

Ishikawa prefecture, Japan

Completion

2020

Total units

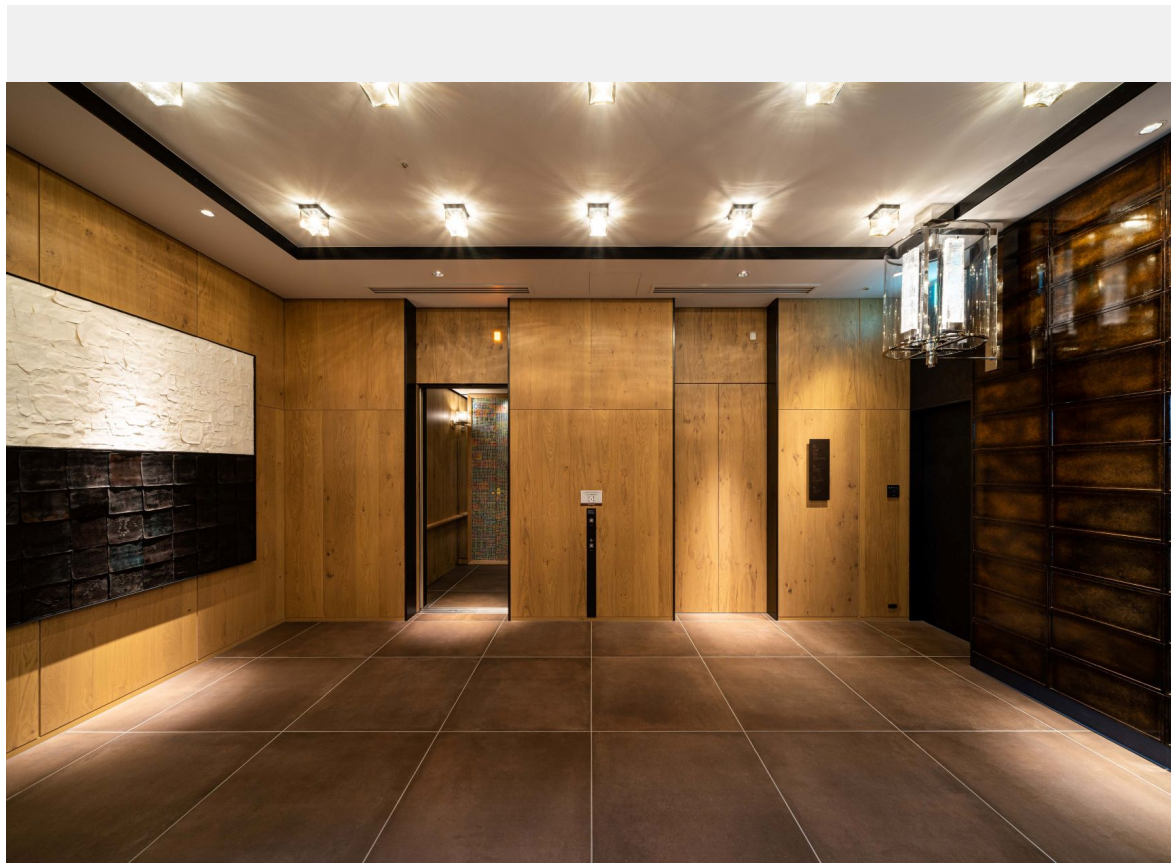
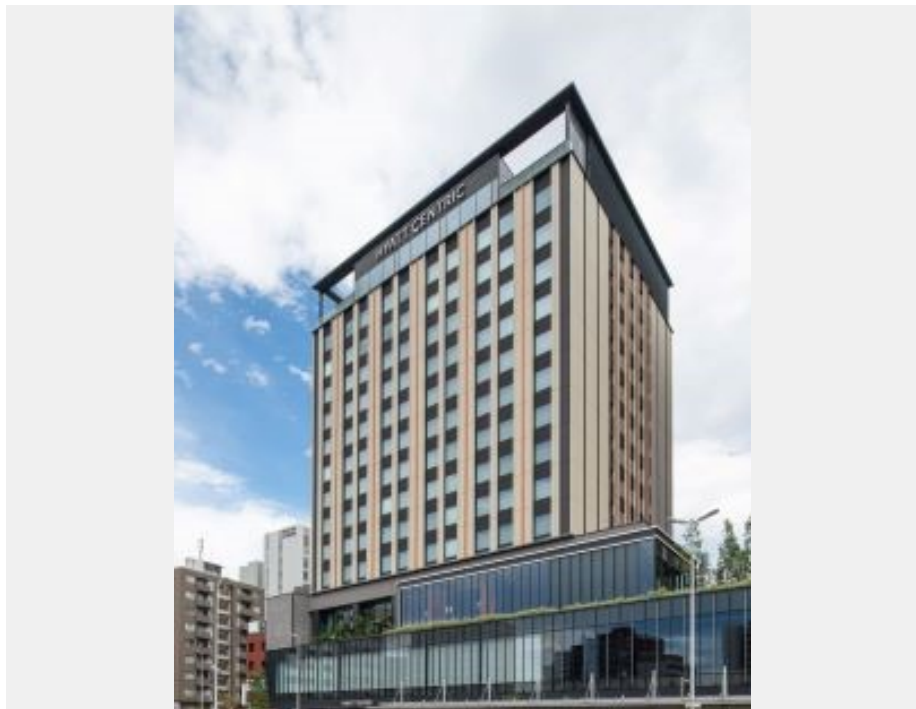
Elevator	7
Escalator	2

Hyatt Centric Kanazawa is a lifestyle hotel situated adjacent to the Kanazawa Port Exit (West Exit) of the Kanazawa railway station. The location of this hotel is a perfect tour starting place. From this hotel, tourists can easily visit various local traditional and cultural places.

Inside this hotel, there are many works of art which are originated by the local city of Kanazawa. Hotel guests can feel the long- and well-established local tradition and culture as well as being able to enjoy a comfortable stay.

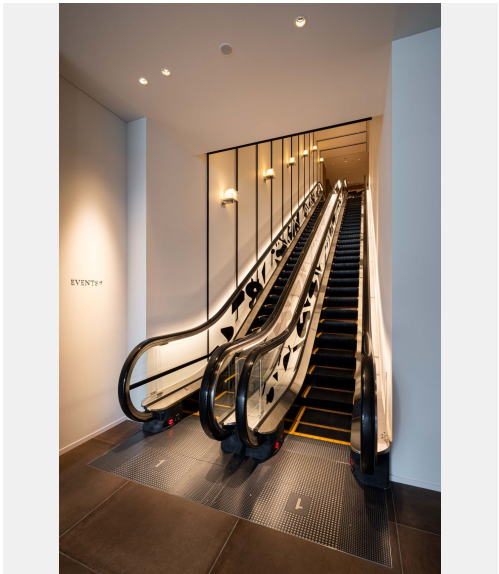
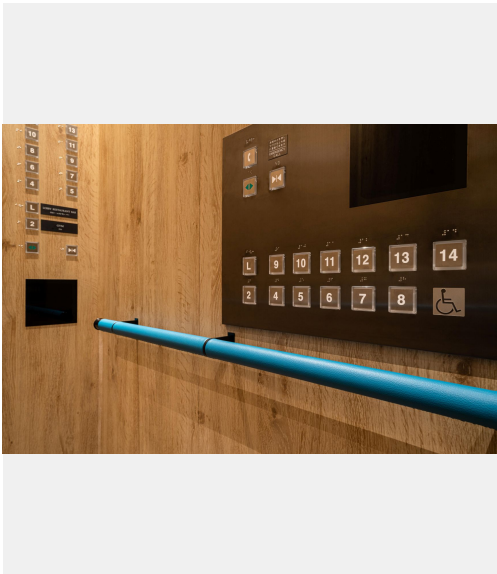
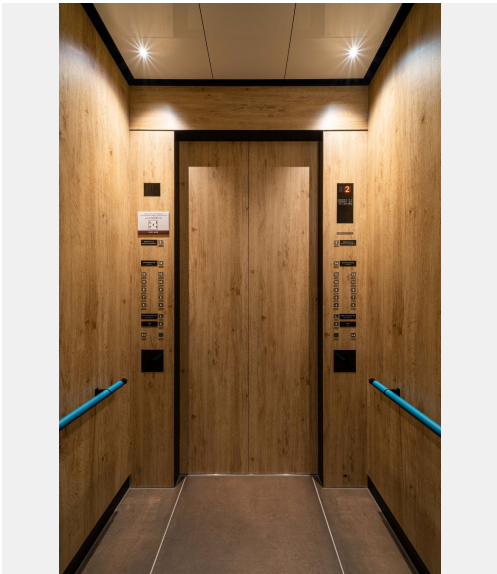
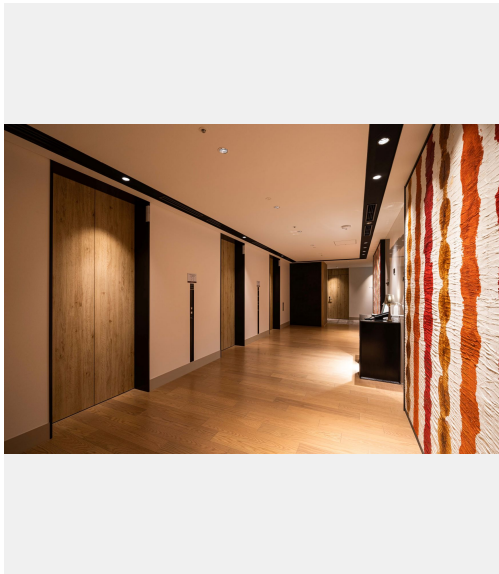
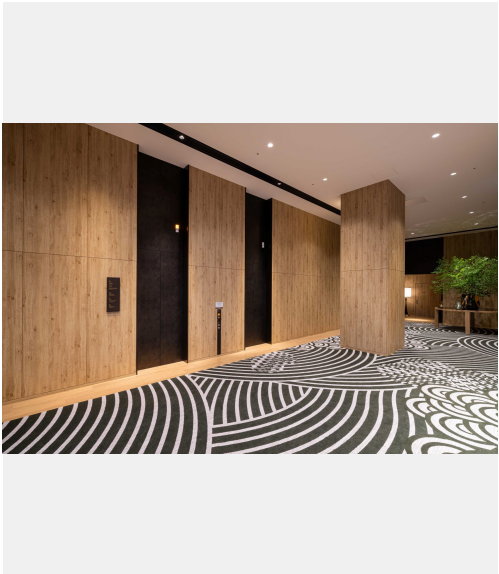
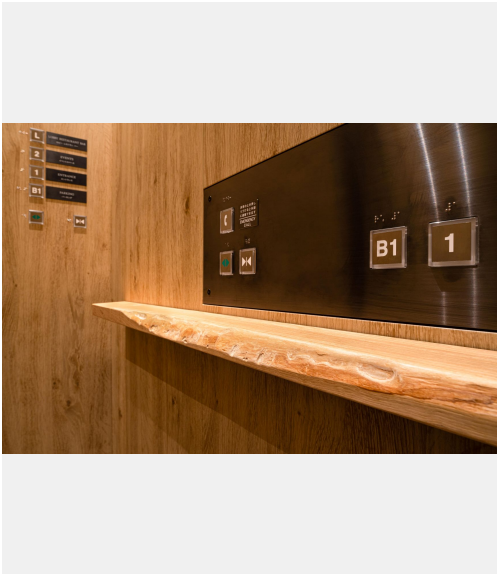
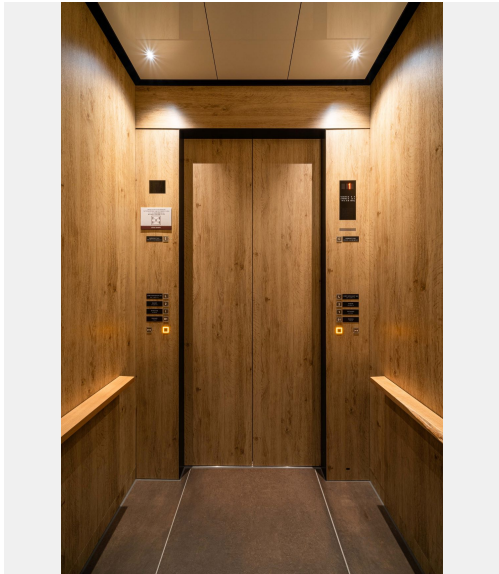
In this hotel, there are seven (7) units of Fujitec elevators and two (2) units of Fujitec escalators. In the interior of the elevators, Knotty Oak, which is non-flammable oak wood panel with knots on the surface, is applied on the side walls and the elevator operating panels. This application makes hotel guests and visitors feel the nature in the elevators.

As other remarkable features in the interior of the elevators, there are bench-like wooden handrails and pipe handrails wrapped with turquoise blue leather.



Owner	ORIX Corporation
Architect	Takenaka Corporation
Contractor	Takenaka Corporation

Building name	Location	Completion	Total units	
Hyatt Centric Kanazawa	Ishikawa prefecture, Japan	2020	Elevator	7
			Escalator	2





Building name	Location	Completion	Total units
Hyatt Centric Kanazawa	Ishikawa prefecture, Japan	2020	Elevator 7 Escalator 2

## Specifications Elevator

Model	Use	Capacity (kg)	Capacity (person)	Speed (m/min)	Stop number of floors (floor)	unit
Order XIOR	Passenger	1300	20	105	13	2
Order XIOR	Passenger	1300	20	105	11	1
Order XIOR	Passenger	1300	20	60	4	2
Order XIOR	Service	1350	20	105	15	1
Order XIOR	Service	1350	20	105	14	1

## Escalator

Model	Type	Step width (mm)	Rise (mm)	Incline (degree)	unit
GS-NX	F	600	5750	30	2