



Building name

Kyoyamato / Park Hyatt Kyoto

Location

Higashiyama in Kyoto, Japan

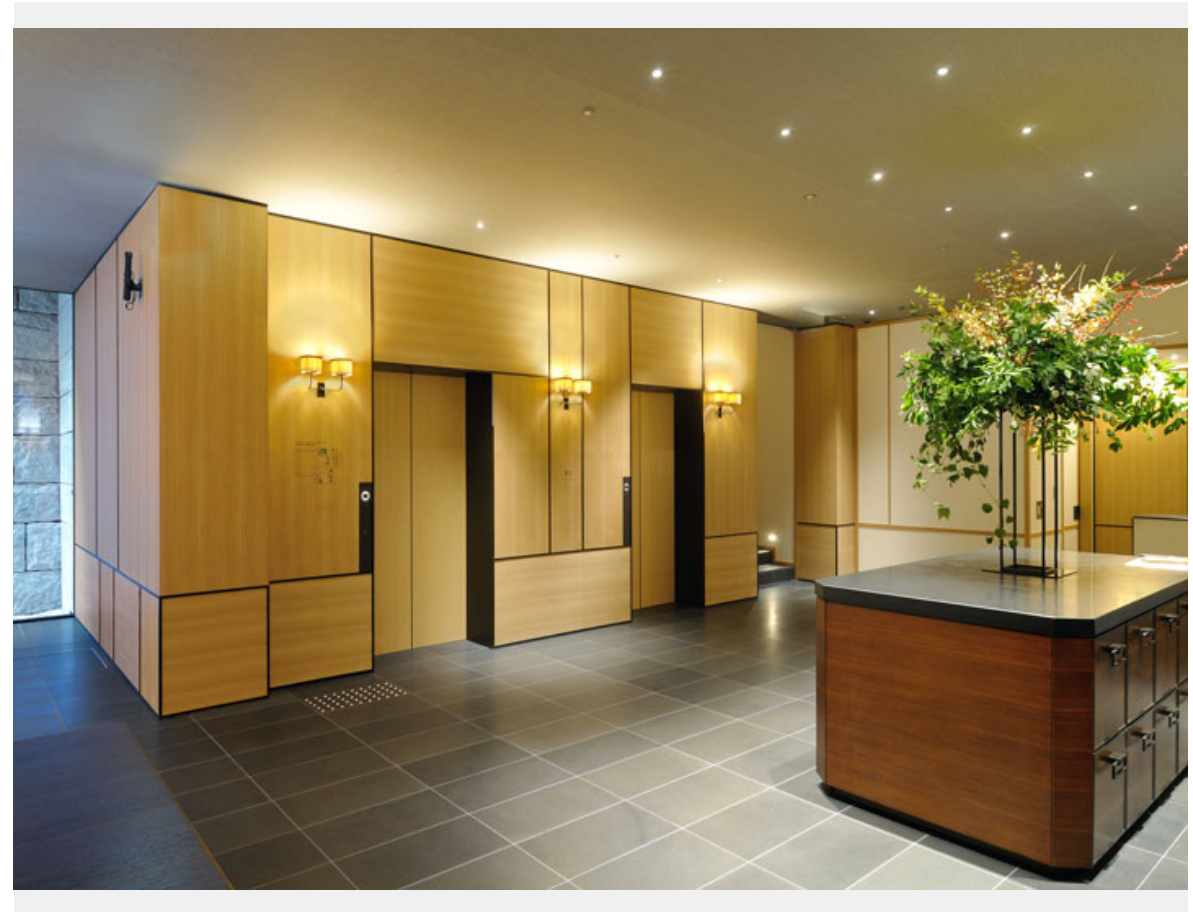
Completion

2019

Total units

Elevator 10

Kyoyamato / Park Hyatt Kyoto is adjacent to Kodaiji Temple in Higashiyama, Kyoto. Situated in the premier location in Kyoto, the hotel faces Ninenzaka Slope leading up to Kiyomizu-dera Temple. Park Hyatt Kyoto is set on the grounds of the elegant Kyoyamato restaurant and blends perfectly with its surroundings, which include historical architecture and serene Japanese gardens. Fujitec supplied ten elevators for the facility, including high-end custom--designed elevator cars featuring gold leaf ceilings.



Owner	Takenaka Corporation
Architect	Takenaka Corporation (Interior Design: tonychi + Takenaka Coporation; Landscape Architect: Yasuo Kitayama)
Contractor	Takenaka Corporation

Building name

Kyoyamato / Park Hyatt Kyoto

Location

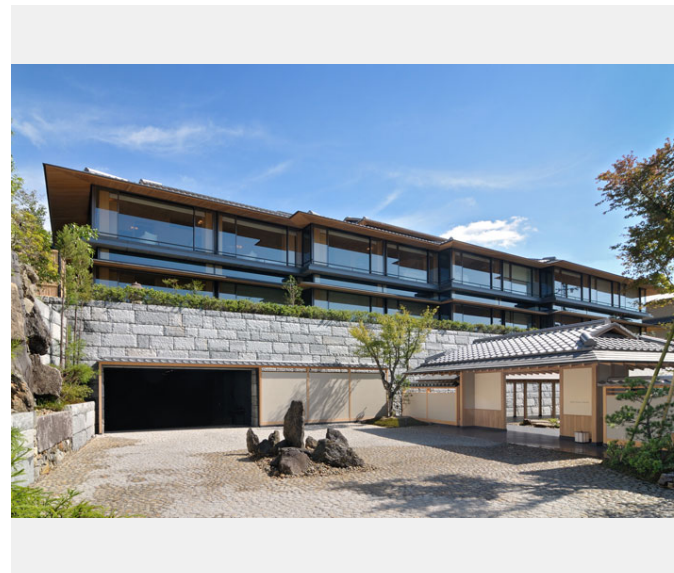
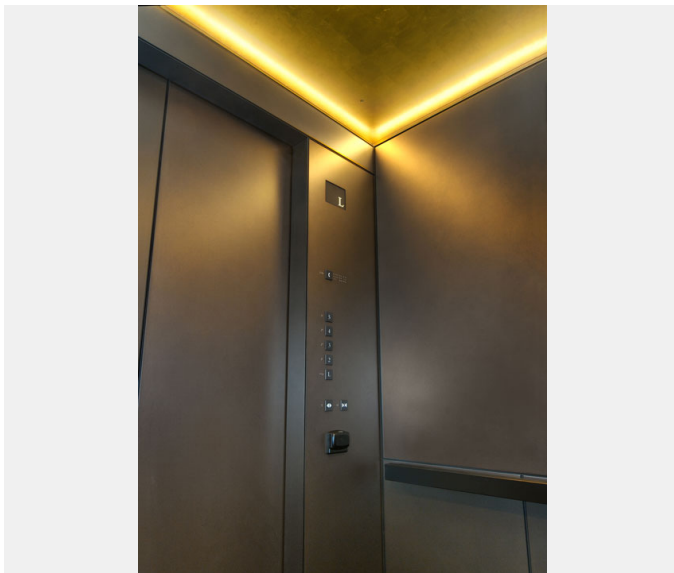
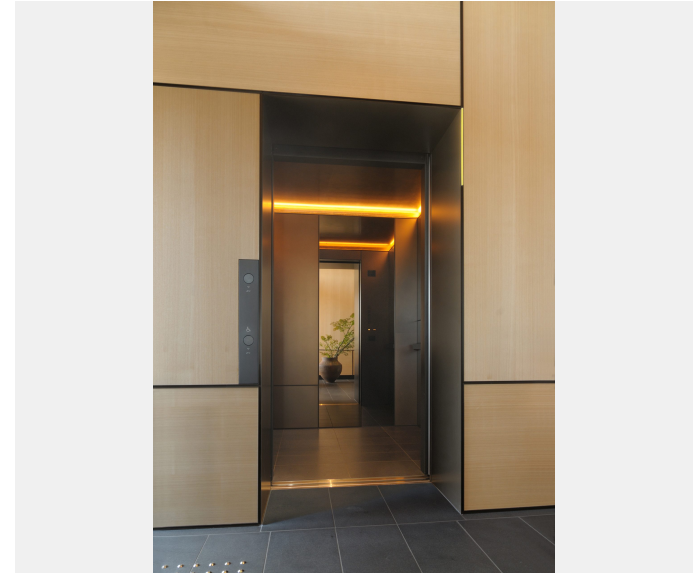
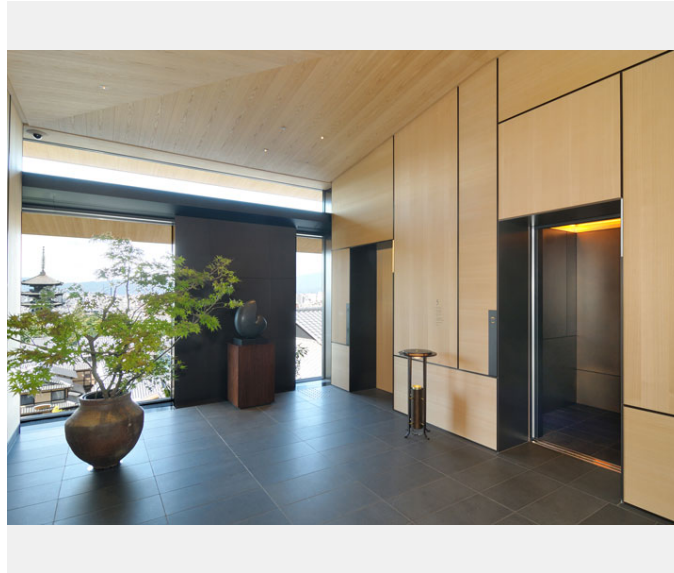
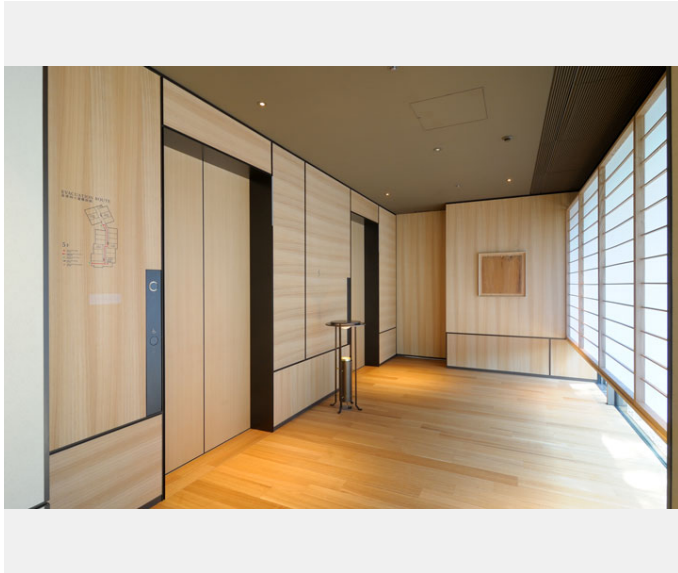
Higashiyama in Kyoto, Japan

Completion

2019

Total units

Elevator 10





Building name	Location	Completion	Total units
Kyoyamato / Park Hyatt Kyoto	Higashiyama in Kyoto, Japan	2019	Elevator 10

Specifications
Elevator

Model	Use	Capacity (kg)	Capacity (person)	Speed (m/min)	Stop number of floors (floor)	unit
Order XIOR	Passenger	1150	17	90	5	2
Order XIOR	Passenger	1150	17	60	3	4
XIOR	Residence	900	13	60	5	1
XIOR	Residence	900	13	60	3	2
XIOR	Service	900	13	60	4	1