



Building name

Four Seasons Hotel Mumbai

Location

Mumbai, India

Completion

2009

Total units

Elevator 8

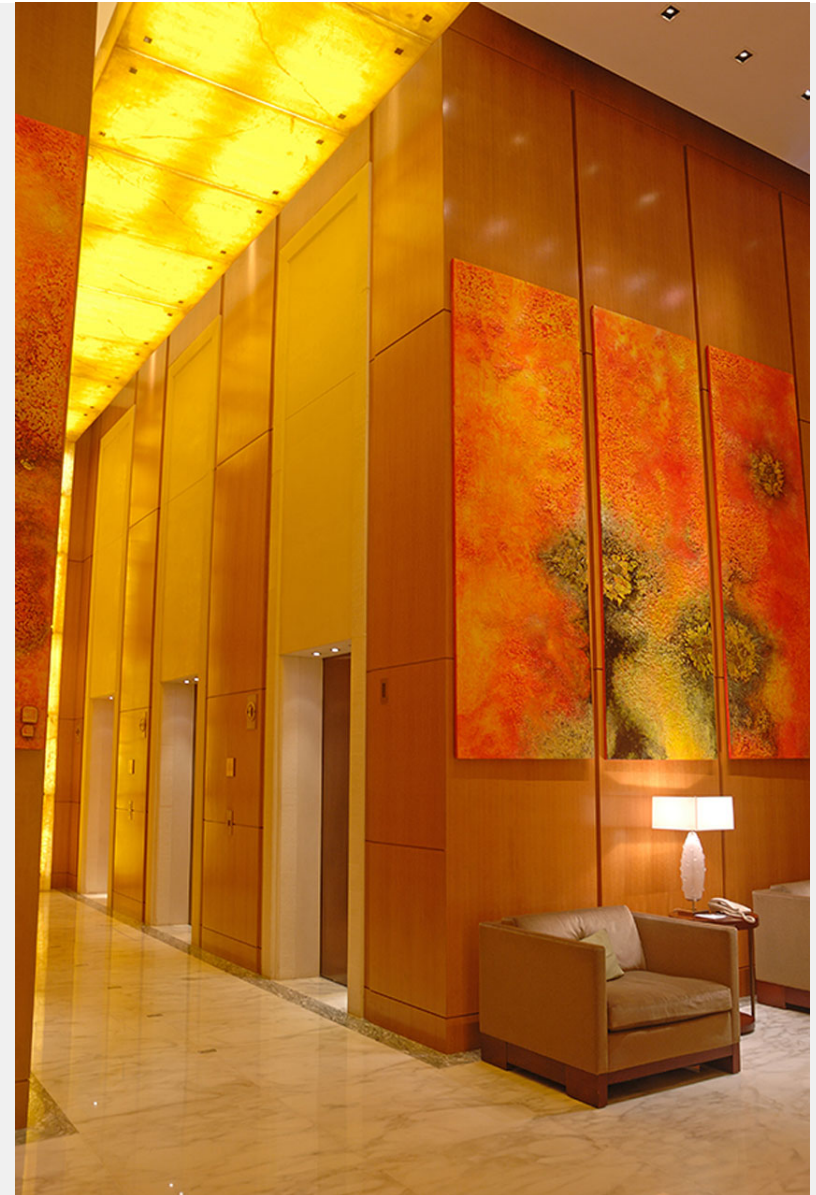
Mumbai, on the west coast of India, is a model city in South Asia. The Four Seasons Hotel Mumbai is a five-star hotel built in the emerging district of Worli.

In this 33-story hotel, Fujitec has installed eight high-class elevators. A panel lighting that is matched with the interior of the hotel has been provided on the rear wall of the elevator car, creating a classy atmosphere that integrates with the image of the hotel.

From many of the hotel rooms, people can enjoy a nice view of the Arabian Sea and the skyline of Mumbai.



Owner	MAGUS ESTATES & HOTEL PVT Ltd.
Architect	HAFEEZ CONTRACTOR
Contractor	AHLUWALIA CONTRACTORS (INDIA) LTD





Building name

Four Seasons Hotel Mumbai

Location

Mumbai, India

Completion

2009

Total units

Elevator

8

## Specifications

### Elevator

Model	Use	Capacity (kg)	Capacity (person)	Speed (m/min)	Stop number of floors (floor)	unit
AC-GL	Passenger	1600	21	240	33	2
AC-GL	Passenger	1350	18	240	32	2
AC-GL	Service	1600	21	210	35	2
AC-GL	Passenger	1600	21	90	3	1
AC-GL	Passenger	1600	21	90	2	1