



Building name

Westside III

Location

Kuala Lumpur, Malaysia

Completion

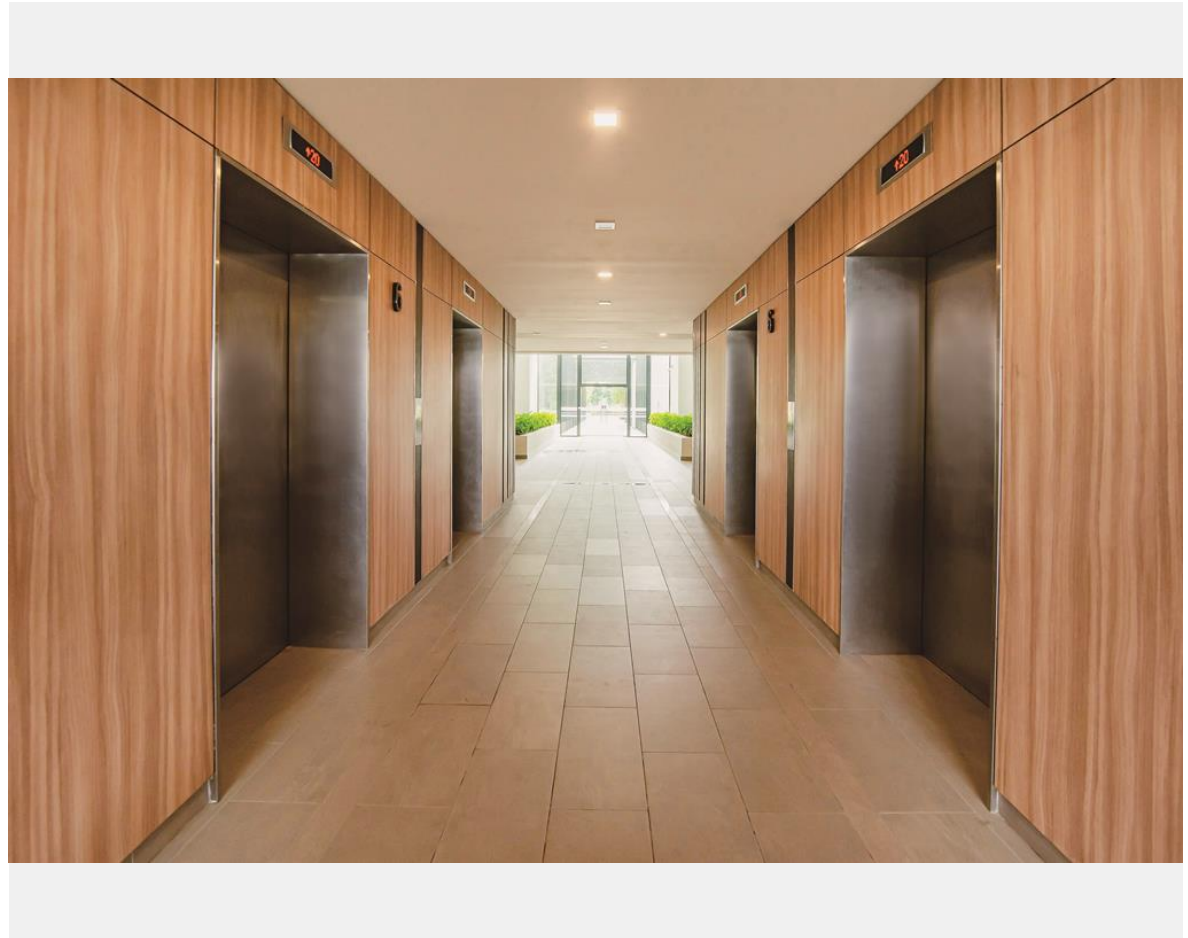
2018

Total units

Elevator 7

The Westside 3 is a luxury condominium complex developed in the famous Desa Parkcity Township. It is a unique eye catcher at the picturesque Center Park with a sky garden at every level.

Seven Fujitec elevators are in operation in the condominium.



| | |
|------------|--------------------------------|
| Owner | Perdana Parkcity Sdn Bhd |
| Architect | MJKanny Architect |
| Contractor | Grand Dynamic Builders Sdn Bhd |

FUJITEC

Building name

Westside III

Location

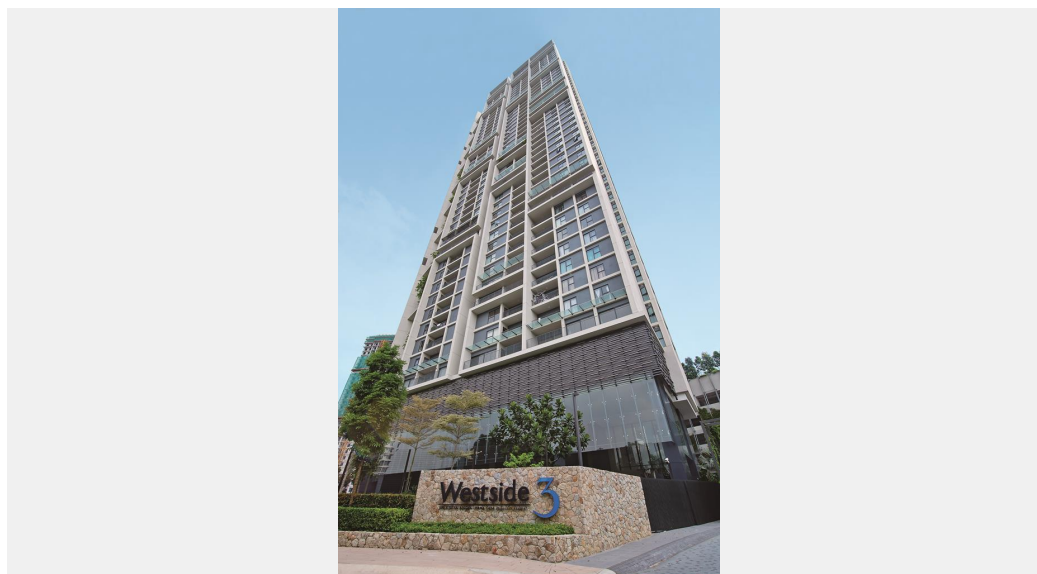
Kuala Lumpur, Malaysia

Completion

2018

Total units

Elevator 7





| | | | |
|---------------|------------------------|------------|-------------|
| Building name | Location | Completion | Total units |
| Westside III | Kuala Lumpur, Malaysia | 2018 | Elevator 7 |

Specifications
Elevator

| Model | Use | Capacity (kg) | Capacity (person) | Speed (m/min) | Stop number of floors (floor) | unit |
|-------|-----------|---------------|-------------------|---------------|-------------------------------|------|
| GLVF | Passenger | 1157 | 17 | 240 | 46 | 4 |
| GLVF | Service | 1157 | 17 | 180 | 46 | 1 |
| MLGS | Passenger | 1021 | 15 | 60 | 8 | 2 |