



Building name

Hyatt Regency Hong Kong, Sha Tin

Location

Hong Kong , China

Completion

2009

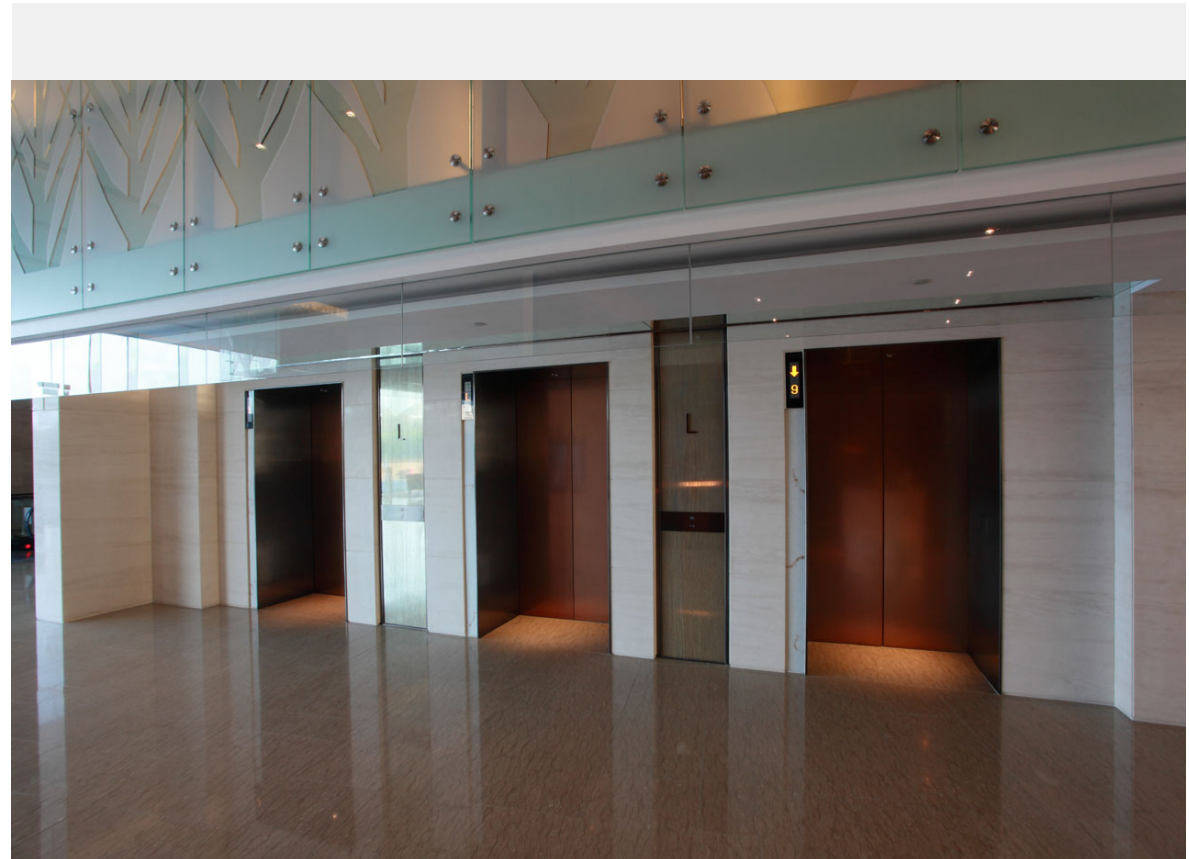
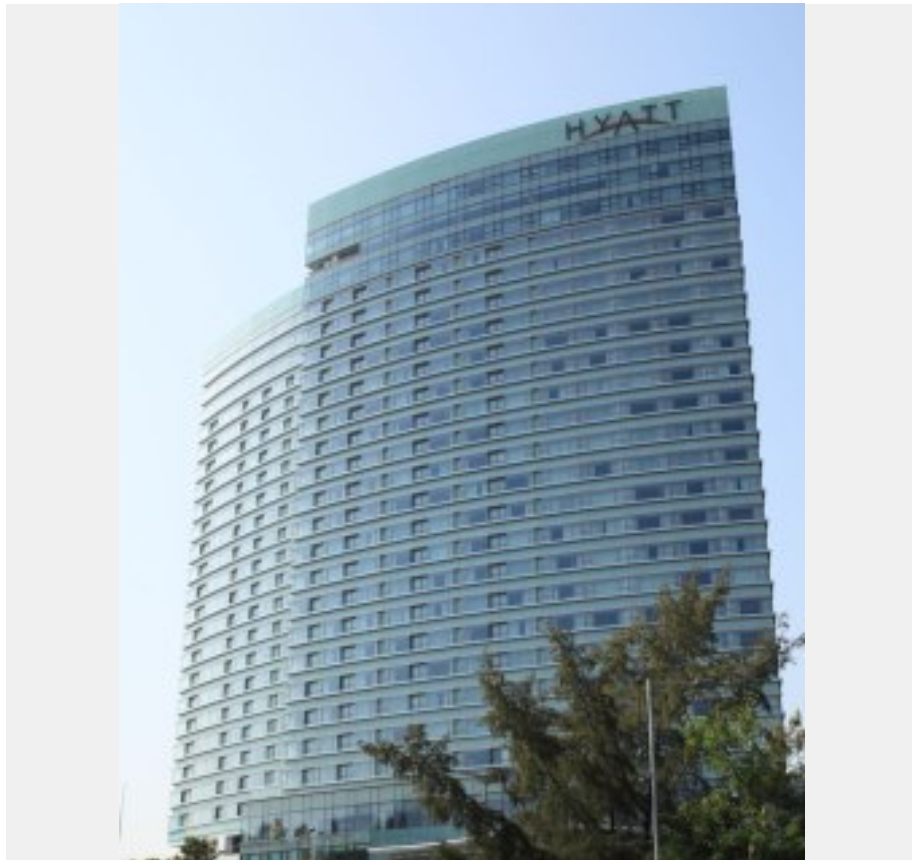
Total units

Elevator 11
Escalator 5

The "Hyatt Regency Hong Kong, Sha Tin" is located in the New Territories near Hong Kong International Airport.

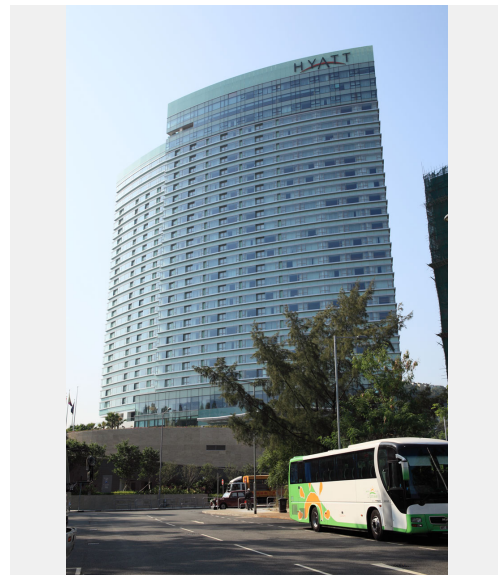
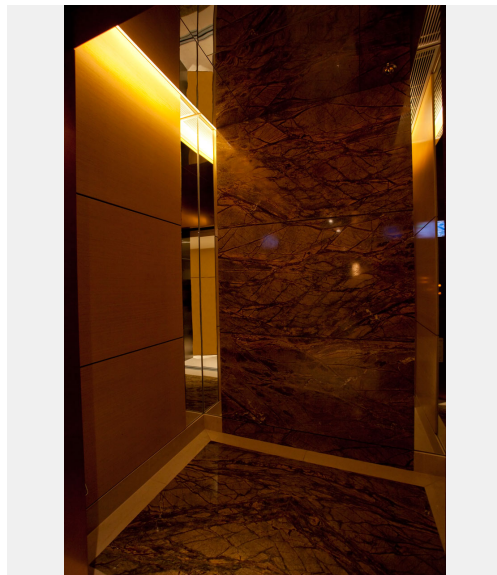
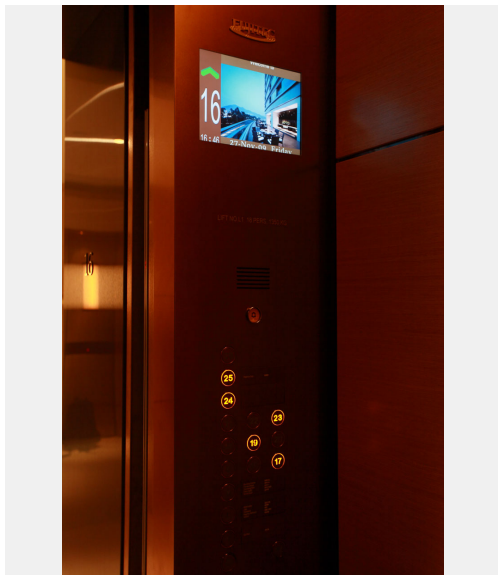
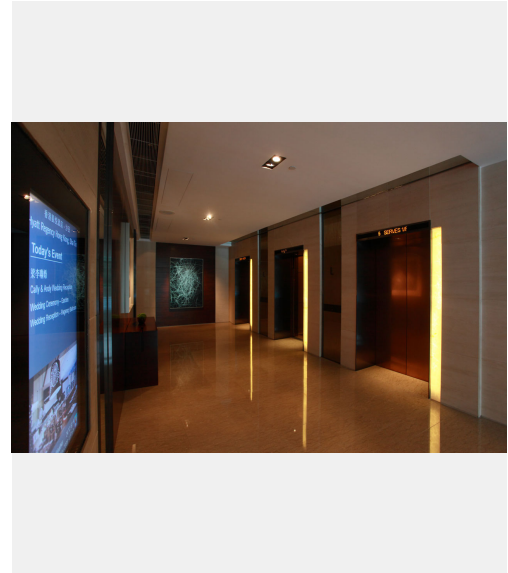
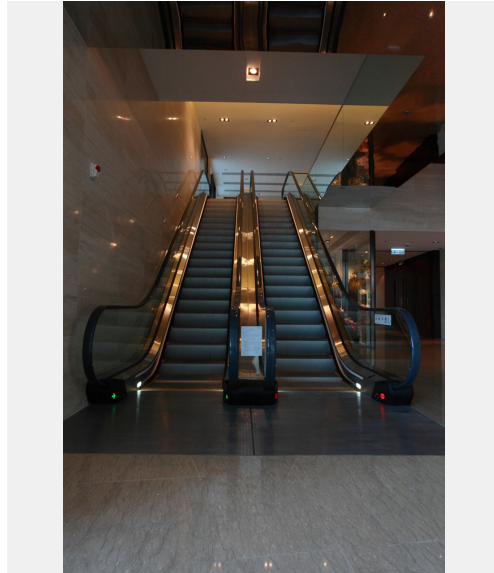
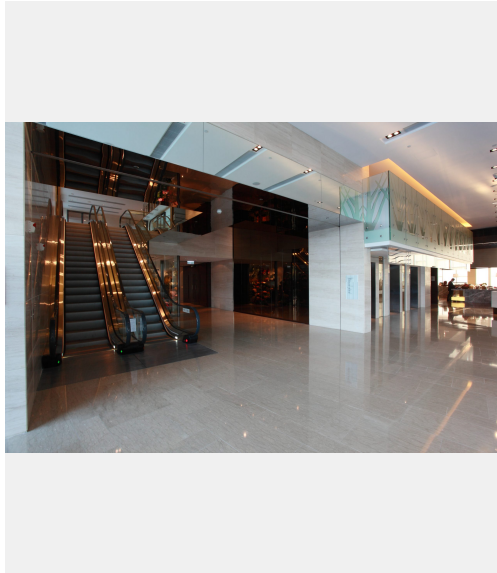
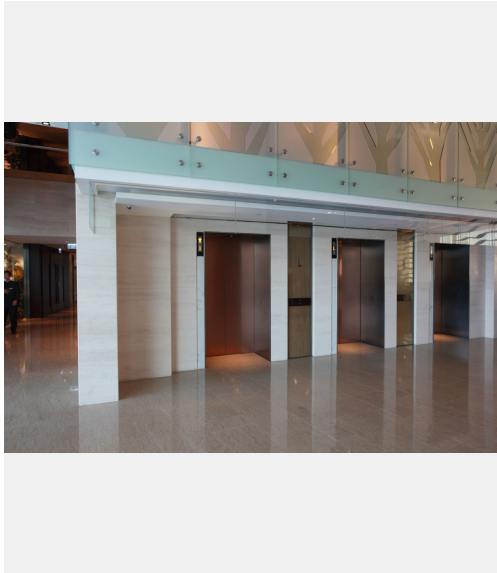
In the 26-story hotel with a gently curving, beautiful outer wall, Fujitec installed 11 elevators and five escalators.

The cab interiors are finished with a dignified and stately design, creating a sophisticated atmosphere. In addition, the liquid crystal display inside each elevator offers a wide array of information to passengers.



Owner	South Scarlet Ltd.
Architect	Wong Tang & Partners Ltd.
Contractor	Hip Hing Engineering Co Ltd

Building name	Location	Completion	Total units
Hyatt Regency Hong Kong, Sha Tin	Hong Kong , China	2009	Elevator 11 Escalator 5





Building name

Hyatt Regency Hong Kong, Sha Tin

Location

Hong Kong , China

Completion

2009

Total units

Elevator 11
Escalator 5

Specifications

Elevator

Model	Use	Capacity (kg)	Capacity (person)	Speed (m/min)	Stop number of floors (floor)	unit
AC-GL	Passenger	1350	18	210	15	2
AC-GL	Passenger	1350	18	210	16	1
AC-GL	Passenger	1500	20	150	15	3
AC-GL	Passenger	1250	17	60	2	1
AC-GL	Service	1650	22	210	27	1
AC-GL	Service	1250	17	210	27	2
MRL	Service	900	12	60	4	1

Escalator

Model	Type	Step width (mm)	Rise (mm)	Incline (degree)	unit
GS8000	S	1000	8600	30	1
GS8000	S	1000	4500	35	2
GS8000	S	1000	3800	35	2