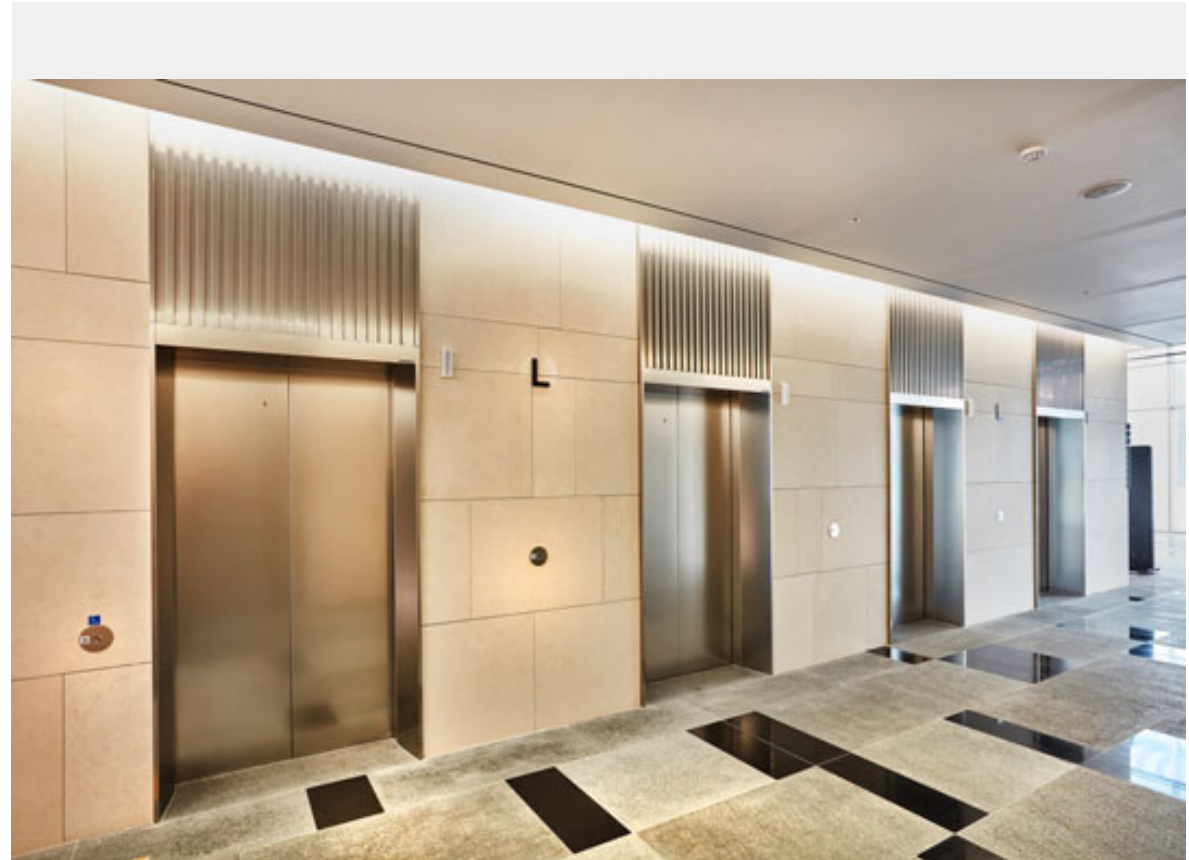


Young City is an office building that stands near Yeouido, the financial heart of Korea. It consists of two buildings with five underground floors and 13 above-ground floors, and has total floorspace of 99,000 square meters.

Twenty-six Fujitec elevators and eight Fujitec escalators operate in Young City.

The smart design of its 20 stainless-steel-tone rapid model elevators with a top speed of 150 meters per minute harmonizes well with the office.



Owner	Standard Chartered
Architect	KIAHN architecture/ HANKI Architects
Contractor	DAELIM Industrial Co.,Ltd.

Building name

Young City

Location

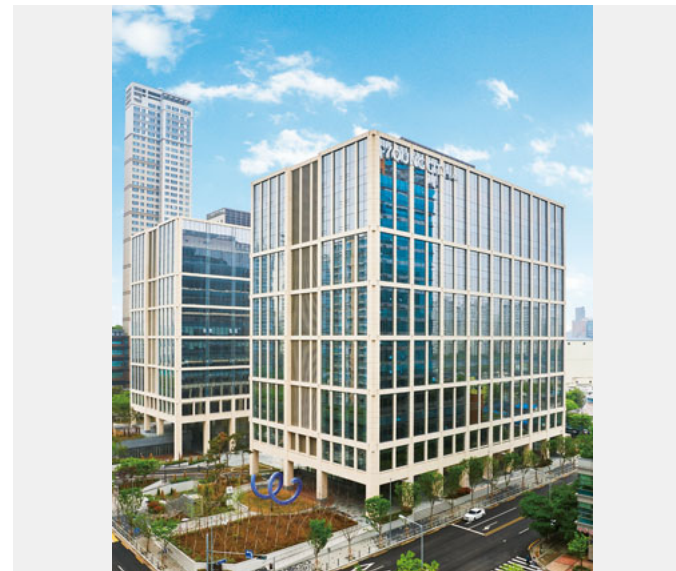
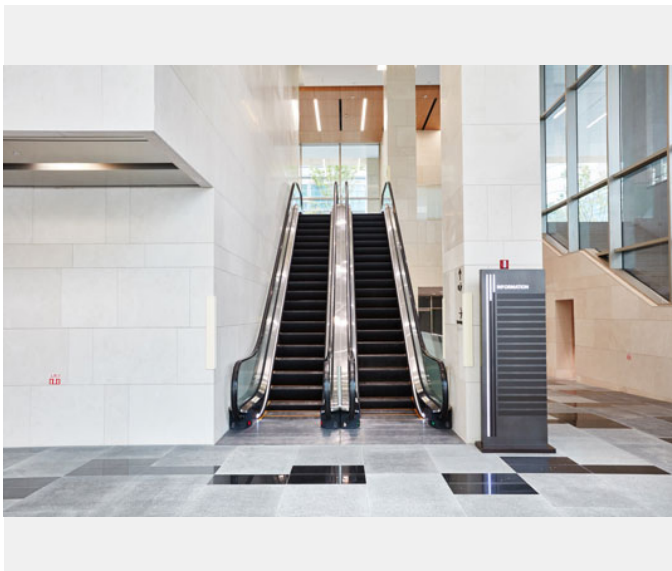
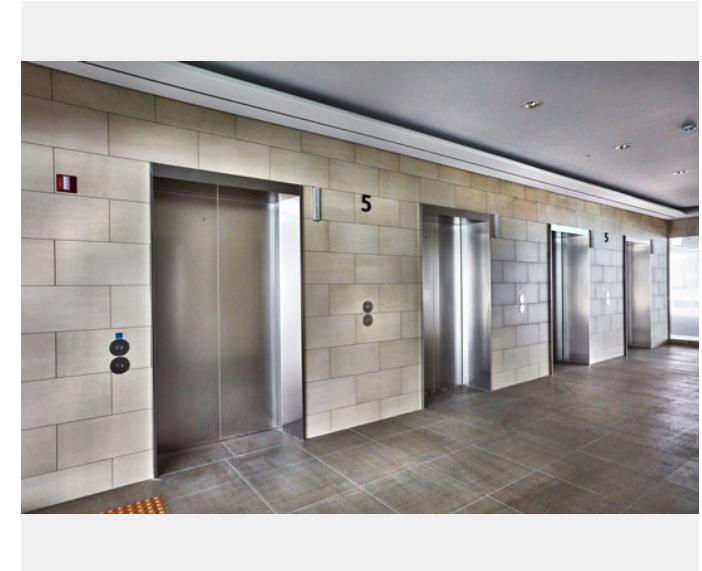
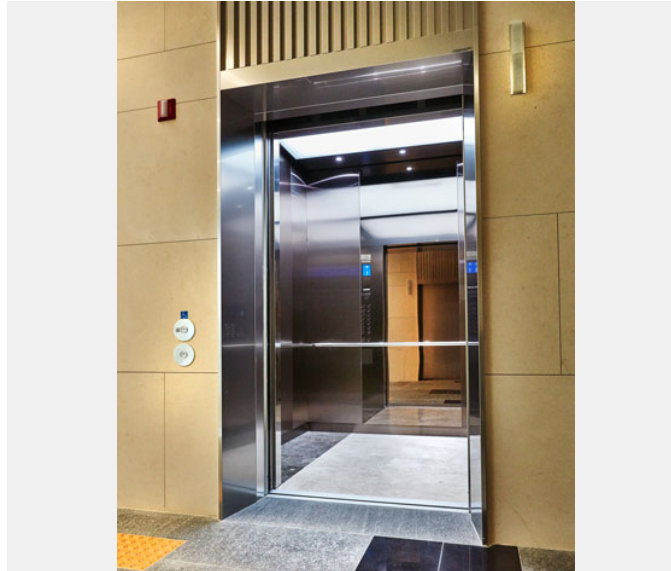
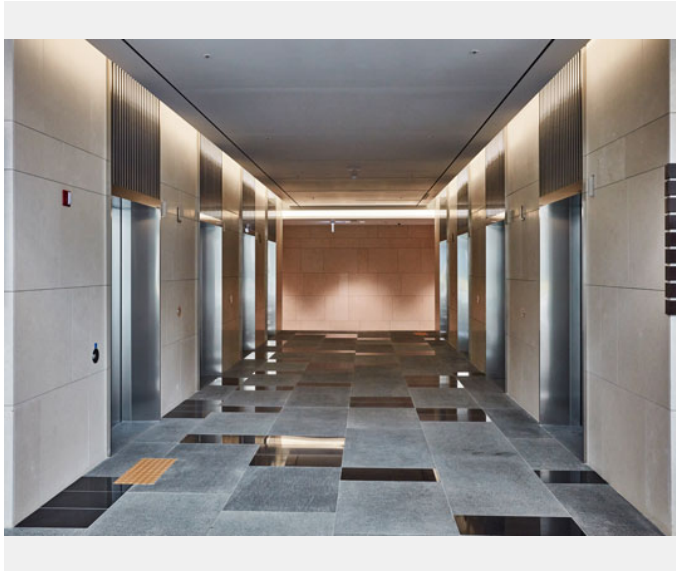
Seoul, Korea

Completion

2017

Total units

Elevator 26
Escalator 8





Building name

Young City

Location

Seoul, Korea

Completion

2017

Total units

Elevator 26
Escalator 8

Specifications Elevator

Model	Use	Capacity (kg)	Capacity (person)	Speed (m/min)	Stop number of floors (floor)	unit
PMGL	Passenger	1600	24	150	14	16
PMGL	Passenger	1600	24	150	18	4
REXIA	Passenger	1600	24	90	5	2
REXIA	Passenger	1150	17	60	2	4

Escalator

Model	Type	Step width (mm)	Rise (mm)	Incline (degree)	unit
GS8000-NX	S	1000	5050	35	4
GS8000-NX	S	1000	4700	35	4