



Building name

Yaoko Support Center

Location

Kawagoe, Saitama

Completion

2018

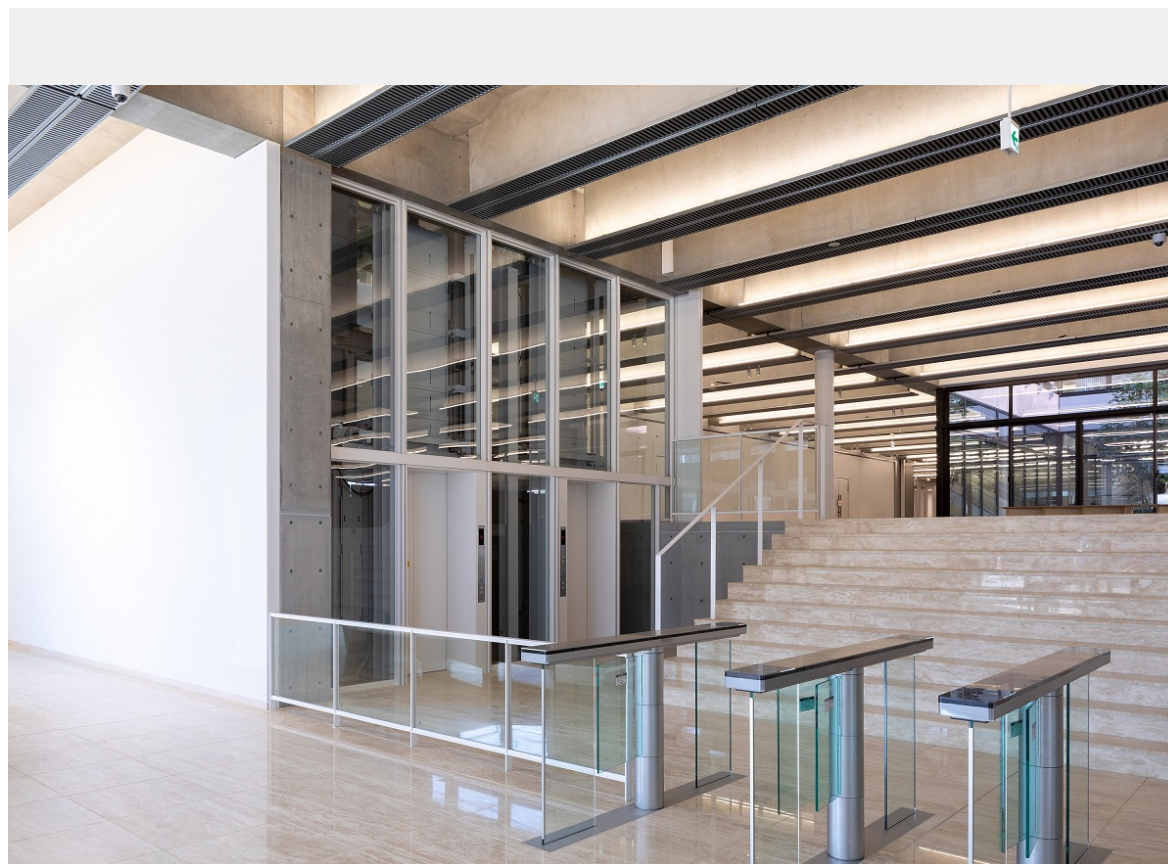
Total units

Elevator

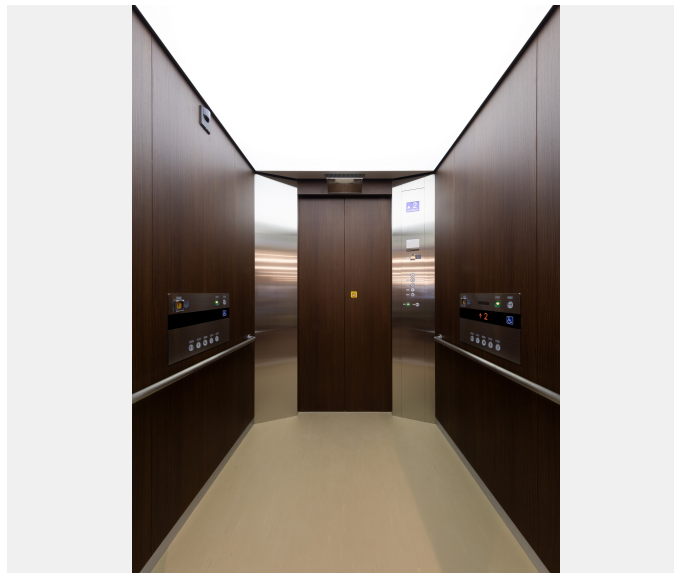
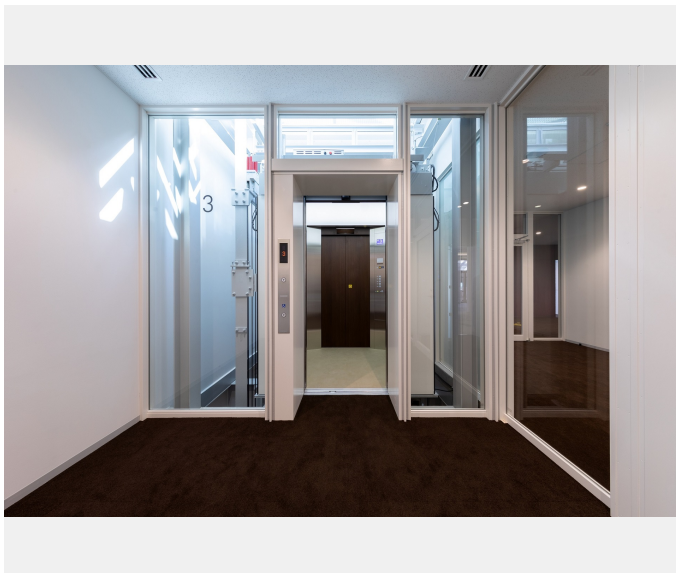
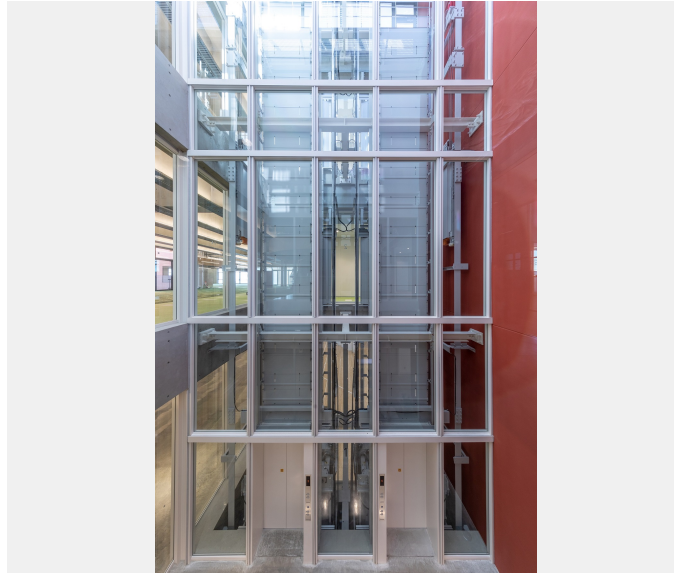
4

Yaoko Co., Ltd., operates supermarkets across a wide swath of the Tokyo metropolitan area, centered mainly in Saitama Prefecture. Its headquarters building with four stories (one of which is underground) was named Yaoko Support Center partly because it "supports" the company's stores. By putting courtyards and terraces in two locations, the designer achieved a comfortable and healthy work environment where employees can feel natural wind and light.

Four Fujitec elevators are in operation in the building. The parts of the elevators inside the glass-walled elevator shafts are all painted the same color to create a sense of unity. The same color is used for the doors, jambs, floor walls and pillars to give the boarding areas a refined finish.



Owner	Yaoko Co., Ltd.
Architect	Toyo Ito & Associates, Architects
Contractor	Shimizu Corporation





Building name

Yaoko Support Center

Location

Kawagoe, Saitama

Completion

2018

Total units

Elevator

4

Specifications

Elevator

Model	Use	Capacity (kg)	Capacity (person)	Speed (m/min)	Stop number of floors (floor)	unit
XIOR	Passenger	1000	15	60	5	3
Order XIOR	Service	1300	20	60	3	1