

The Sheraton Hsinchu Hotel, Taiwan is a high-class hotel located in the heart of the City of Hsinchu, which is known for the Hsinchu Science Park as the global production base for high-tech equipment parts in Taiwan.

With 22 floors above ground and six floors below, the hotel has 386 guest rooms, an international convention hall, restaurants, lounge bars, a gym and a spa.

In this building, Fujitec Taiwan has supplied and installed 14 elevators, including six 210 mpm high-speed models, and six stylish-designed escalators.

The elevator cabs and walls are mirror finished, creating a luxurious and refined atmosphere that suitably matches the high-class hotel.



Owner	Fony-Yi Construction Co., Ltd.
Architect	China-Hung Architect & Associates/Yao Jia-Zhi Architect & Associates
Contractor	Song-En Construction Co., Ltd.



Building name

Sheraton Hsinchu Hotel, Taiwan

Location

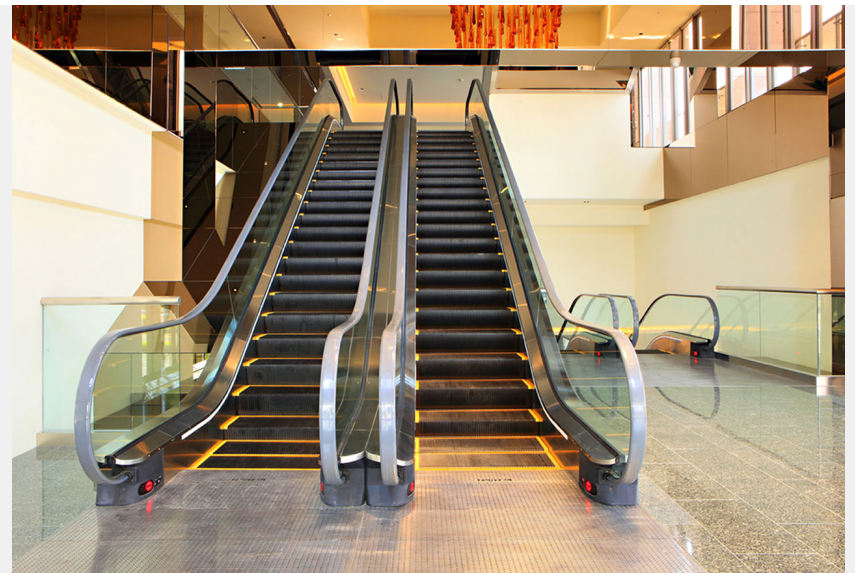
Hsinchu , Taiwan

Completion

2010

Total units

Elevator 14  
Escalator 6





Building name	Location	Completion	Total units
Sheraton Hsinchu Hotel, Taiwan	Hsinchu , Taiwan	2010	Elevator 14 Escalator 6

Specifications  
Elevator

Model	Use	Capacity (kg)	Capacity (person)	Speed (m/min)	Stop number of floors (floor)	unit
AC-GL	Passenger	1350	18	210	22	4
AC-GL	Passenger	1000	13	210	22	2
MRL	Passenger	1000	13	90	11	3
AC-GL	Service	1800	24	180	28	1
AC-GL	Service	1800	24	180	24	1
AC-GL	Service	1350	18	180	26	1
AC-GL	Service	1800	24	90	6	2

Escalator

Model	Type	Step width (mm)	Rise (mm)	Incline (degree)	unit
GS8000-NX	S	1000	4500	30	2
GS8000-NX	S	1000	4000	30	4