



Building name

Marina One

Location

Singapore

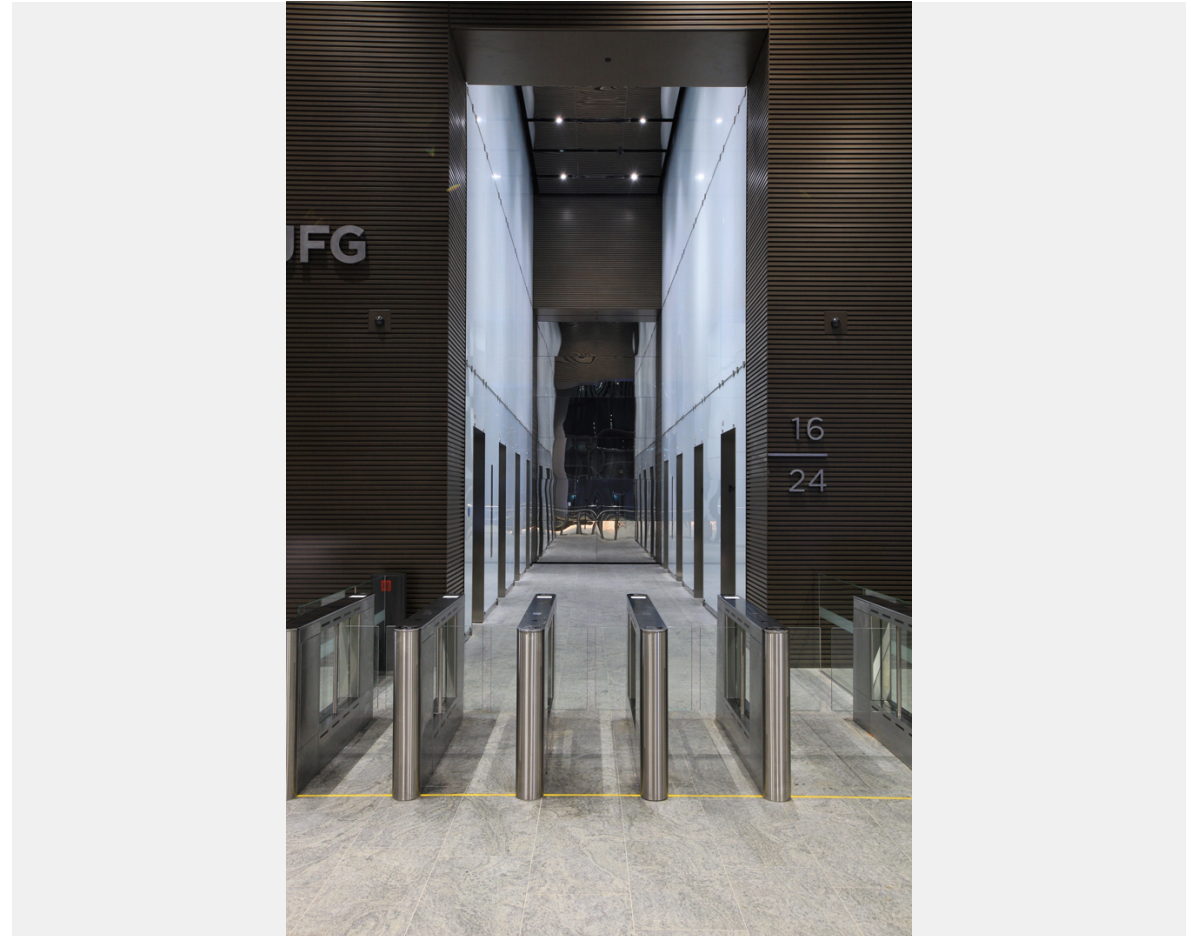
Completion

2017

Total units

Elevator 70
Escalator 28

This project is a Joint-Venture between Khazanah Nasional and Temasek Holdings located in the landmark area of Marina Bay Singapore. The total project consists of 2 office blocks of 30-storeys, 2 residential blocks of 34-storeys, a commercial retail podium and a green garden at the centre of the development. This project is surrounded by some of the most recognisable developments in Singapore such as Marina Bay Sands, Singapore Flyer, Esplanade Theatres On The Bay and Gardens By The Bay.



Owner	MS Commercial Pte Ltd
Architect	Architects 61 Pte Ltd Beca Carter & Hollings (S.E. Asia) Pte Ltd
Contractor	Hyundai-GS Joint Venture

Building name

Marina One

Location

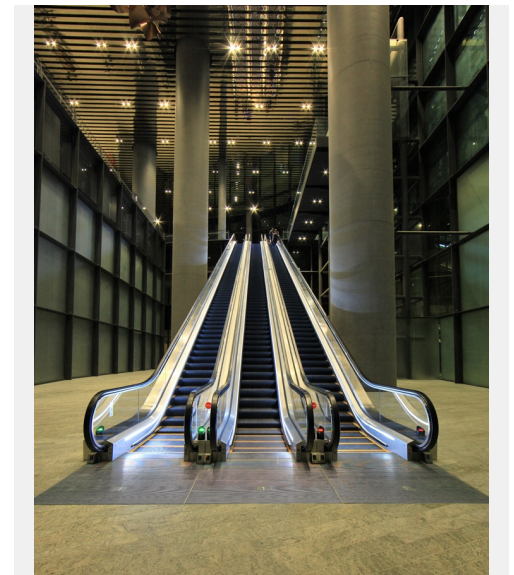
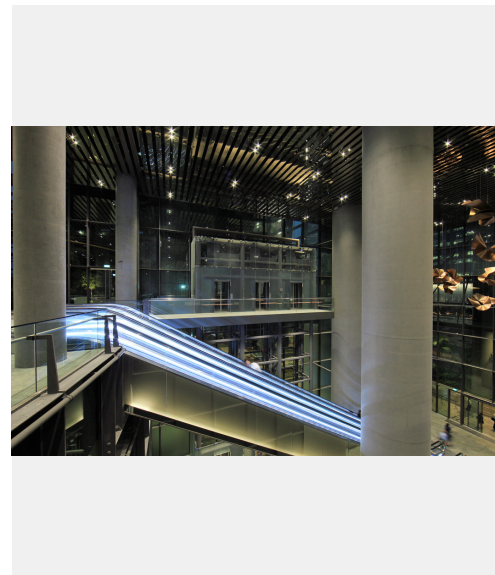
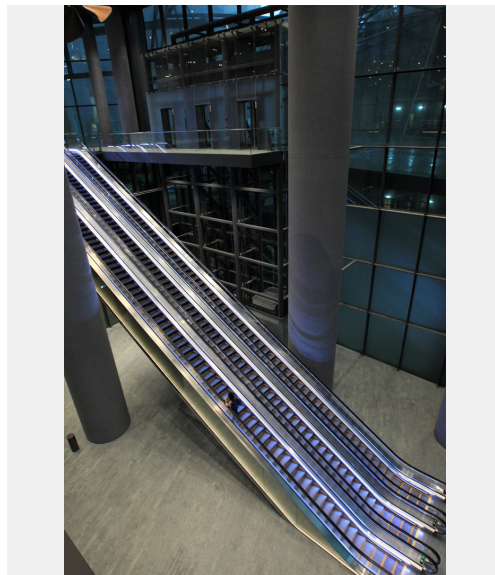
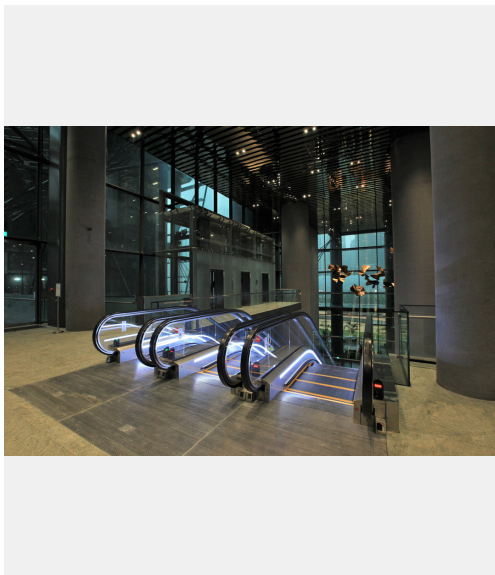
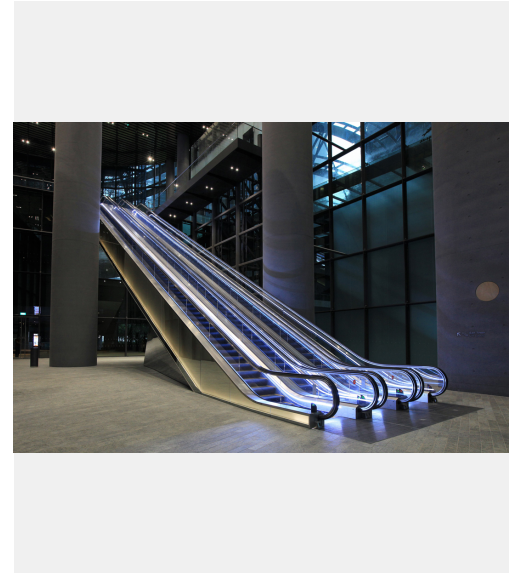
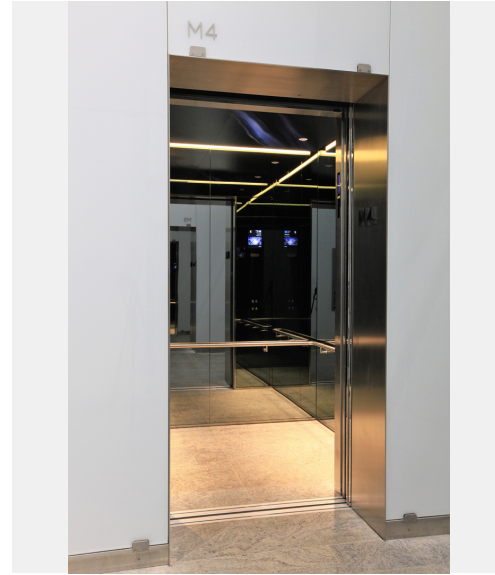
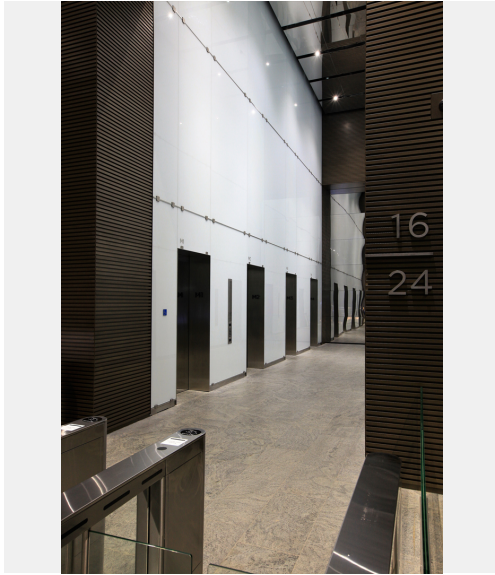
Singapore

Completion

2017

Total units

Elevator 70
Escalator 28





Building name

Marina One

Location

Singapore

Completion

2017

Total units

Elevator 70
Escalator 28

Specifications

Elevator

Model	Use	Capacity (kg)	Capacity (person)	Speed (m/min)	Stop number of floors (floor)	unit
MRX	Passenger	2040	30	180	12	16
MRX	Passenger	2040	30	300	12	4
MRX	Passenger	2040	30	300	11	12
MRX	Passenger	2040	30	360	8	16
MRX	Service	2720	40	240	34	4
MRL	Passenger	1700	25	105	4	6
MRL	Passenger	1630	24	90	7	4
MRL	Service	1630	24	90	5	4
MRL	Passenger	1630	24	90	4	1
MRL	Passenger	1020	15	60	2	3

Escalator

Model	Type	Step width (mm)	Rise (mm)	Incline (degree)	unit
GS8000	F	1000	8520	30	6
GS8000	F	1000	8235	30	2
GS8000	F	1000	9100	30	4
GS8000	F	1000	6500	30	6
GS8000	F	1000	3515	30	4
GS8000	F	1000	13350	30	6