

Fujitec Renews Longest Fujitec Escalator in Japan for Tokyo Big Sight

Fujitec Co., Ltd. (Hikone, Shiga Prefecture; Masayoshi Harada, President and CEO) renewed the longest Fujitec escalator in Japan at Tokyo Big Sight (Koto-ku, Tokyo), the largest international exhibition hall in Japan. This escalator is **45 meters long and 22 meters high**, equivalent to the height of a six-story building.



Longest Fujitec escalator in Japan (after renewal)



Tokyo Big Sight

◆ **Modernization Overview**

Fujitec renewed our escalators installed at Tokyo Big Site to maintain safety and enhance functionality. Construction is being completed in phases alongside the major repair work of the facility, with 8 out of the 12 operating units finished as of August 2024. All construction is planned to be completed by May 2025.

◆ **Longest Fujitec Escalator in Japan**

Two of the eight escalators renewed are the longest Fujitec escalators in Japan, measuring 22 meters high and 45 meters long. This length is equivalent to five escalators in a typical building*, allowing users to travel from the first floor to the sixth floor on one escalator.

*Converted based on assumption that one floor of a typical office building is approximately 4 meters high.

◆ **Future Outlook**

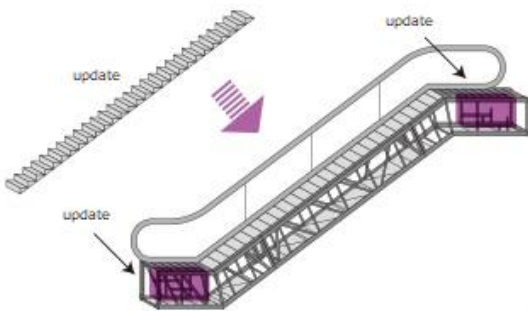
High-rise escalators operating in subway stations and other locations, primarily in urban area, are due for renewal. Fujitec anticipates difficult projects with limited delivery routes and construction methods due to limited entrances and exits, as well as the deep underground nature of such installations. The Company is committed to tailoring construction work to customer's installation sites by leveraging its expertise gained from experience with numerous renewal projects, including Tokyo Big Sight.

Fujitec continues to support elevator and escalator lifecycles through an integrated system as a specialized manufacturer, providing safe and secure building facilities and contributing to sustainable urban development.

Construction Overview

Building Name	Tokyo International Exhibition Center (Nicknamed Tokyo Big Sight)
Usage	Exhibit halls, conference facilities, stores, and offices
Constructed	October 1995
Renewal Period	July, 2023 - May, 2025 (scheduled)
Number of Units	12 Fujitec escalators
Main Construction and Delivery Specifications	<ul style="list-style-type: none"> • Replace major parts in drive and control systems (machines, control panels, steps, handrails, step chains, main drives, etc.) • Add dress guard

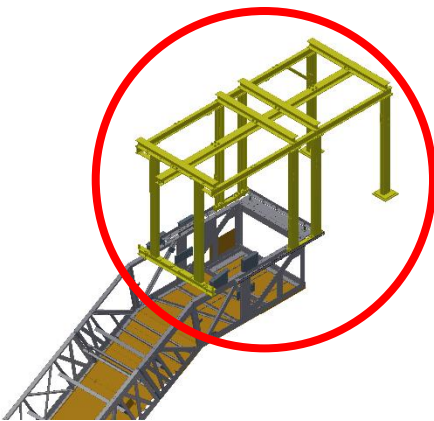
Key Points of the Renewal



- **Adopted *Control Renewal*, an eco-friendly and quick renewal construction method**

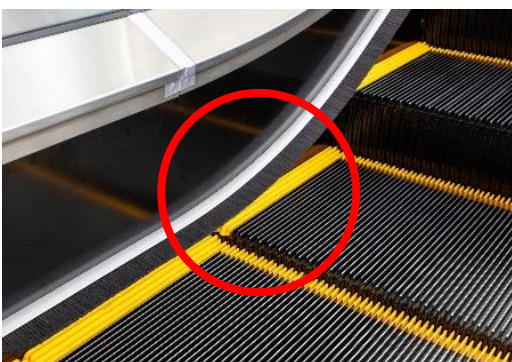
Fujitec adopted Control Renewal, an eco-friendly renewal construction method that continues to use existing functional parts. The use of existing parts reduces work areas, enabling shorter construction periods compared to full renewals.

Fujitec kept the trusses (frame) and balustrades for this project and renewed the main equipment used in the drive and control systems.



- **Developed unique construction equipment and gantry jig for this site**

Fujitec developed a unique in-house gantry jig for use in the renewal of the 22-meter-high escalator at this work site. Gantry jigs are construction components that lift heavy parts in escalator renewal work. Fujitec will use this jig to install, remove, and move parts. Conventional gantry jigs could not be used due to the heavier weight of the main components (machine and main drive) of the 22-meter-high escalators, compared to ordinary escalators. In response, Fujitec developed a gantry jig specifically for this site to install the escalators.



- **Added dress guard to prevent shoes and clothes from getting caught**

Fujitec installed a dress guard on the renewed escalators. Brushes on either side of the steps prevent shoes and clothes from getting caught in the escalators, ensuring user safety.

About Fujitec

Fujitec is a specialist manufacturer of elevators, escalators, and moving walks. Fujitec provides safe, secure, and comfortable moving spaces in 24 countries and regions around the world through an integrated system of research and development, manufacturing, sales, installation, maintenance, and modernization.

Representative : Masayoshi Harada, President and CEO
Head Office : Shiga, Japan
Established : February 9, 1948
Listed market : Prime Market, Tokyo Stock Exchange
Official webpage : <https://www.fujitec.com/>

<Media Contact >

Fujitec Co., Ltd. Press & Public Relations Office
pr@jp.fujitec.com